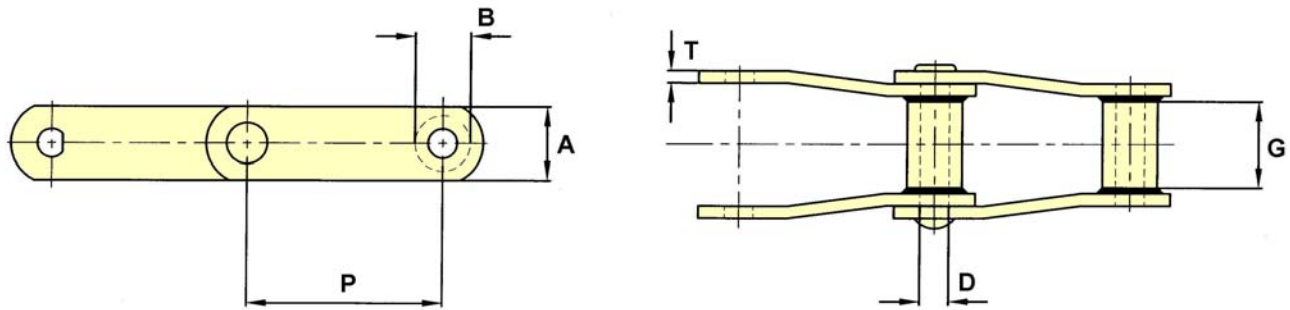


Welded Steel Chain

Plain Chain

Drawing no. 106

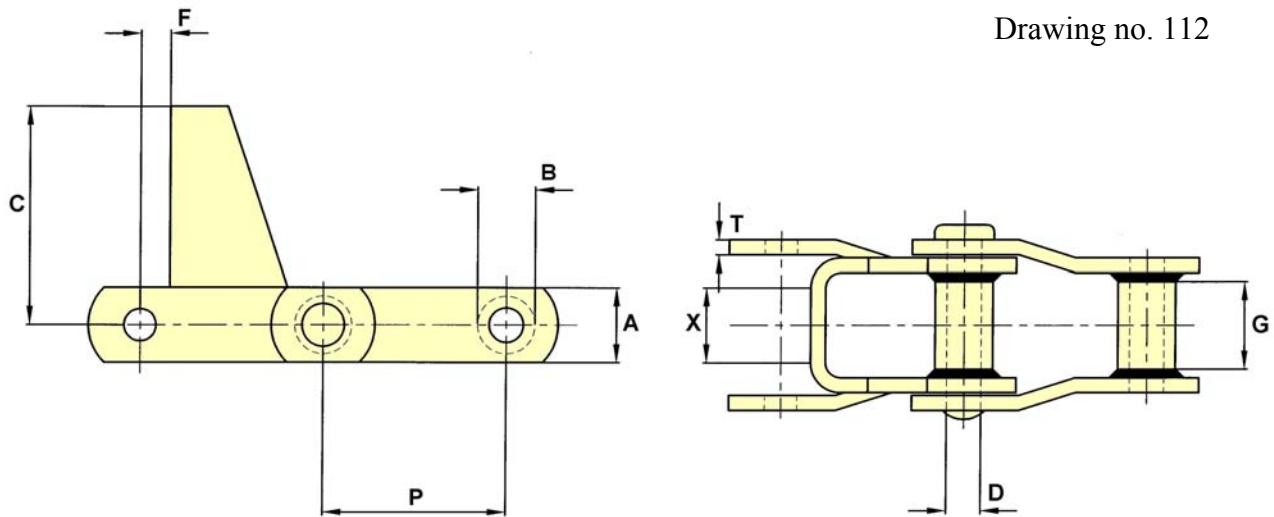


CHAIN NO.	PITCH P	ALLOW. LOAD	U.T.S.	PIN DIA. D	SIDEBAR DEPTH A	MAX. GEARING G	BUSH DIA. B	T
WH78	2.609	3,500	30,000	0.50	1.13	1.13	0.88	0.25
WH82	3.075	4,400	36,000	0.56	1.25	1.25	1.06	0.25
WH111	4.760	8,850	91,000	0.75	1.75	2.00	1.25	0.38
WH124	4.000	7,200	69,000	0.75	1.50	1.50	1.25	0.38
WH132	6.050	15,300	115,000	1.00	2.00	2.88	1.75	0.50

Welded Steel Chain

H1 Attachment

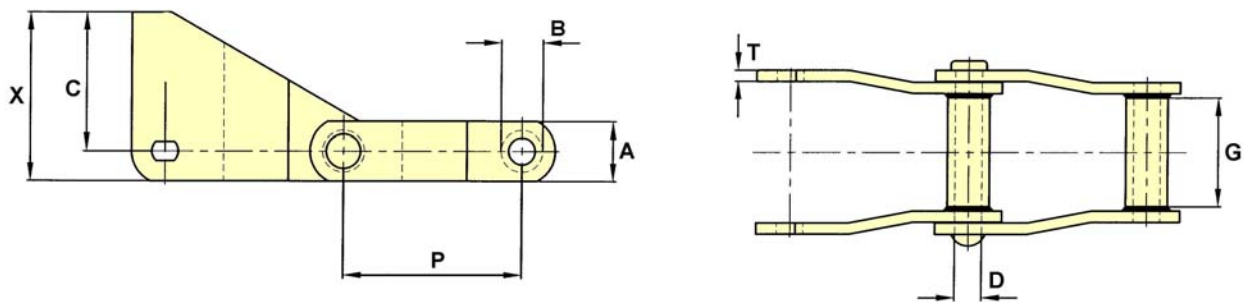
Drawing no. 112



CHAIN NO.	PITCH P	ALLOW. LOAD	U.T.S.	PIN DIA. D	SIDEBAR DEPTH A	MAX. GEARING G	BUSH DIA. B	C	F	T	X
W78	2.609	3,000	20,000	0.50	1.13	1.13	0.88	3.63	0.50	0.25	1.50
W82	3.075	3,800	25,000	0.56	1.25	1.25	1.06	3.63	0.5	0.25	1.75

S1 Attachment

Drawing no. 111



CHAIN NO.	PITCH P	ALLOW. LOAD	U.T.S.	PIN DIA. D	SIDEBAR DEPTH A	MAX. GEARING G	BUSH DIA. B	C	X
W124	4.000	6,200	47,000	0.75	1.50	1.50	1.25	3.25	4.00
W132	6.050	13,000	78,000	1.00	2.00	2.88	1.75	5.00	6.00