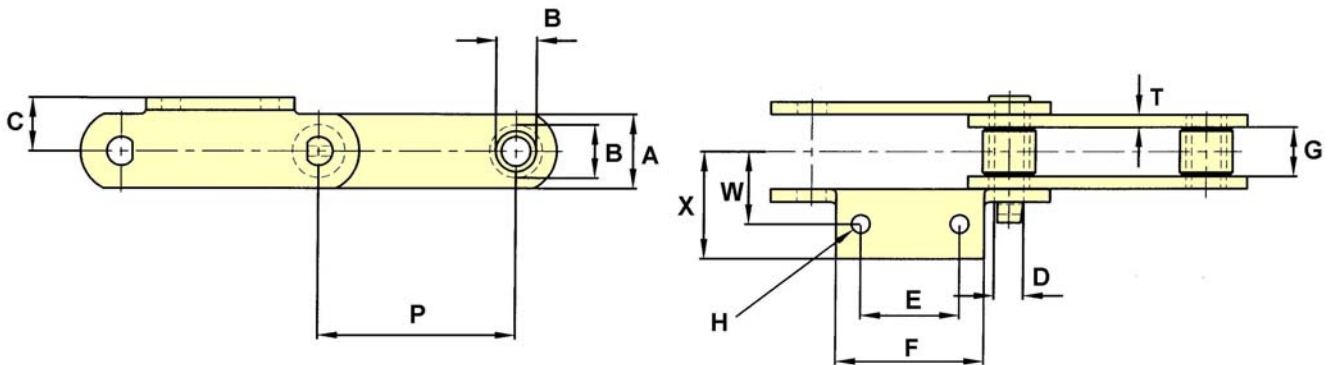


Steel Elevator Chains

A2 Attachments

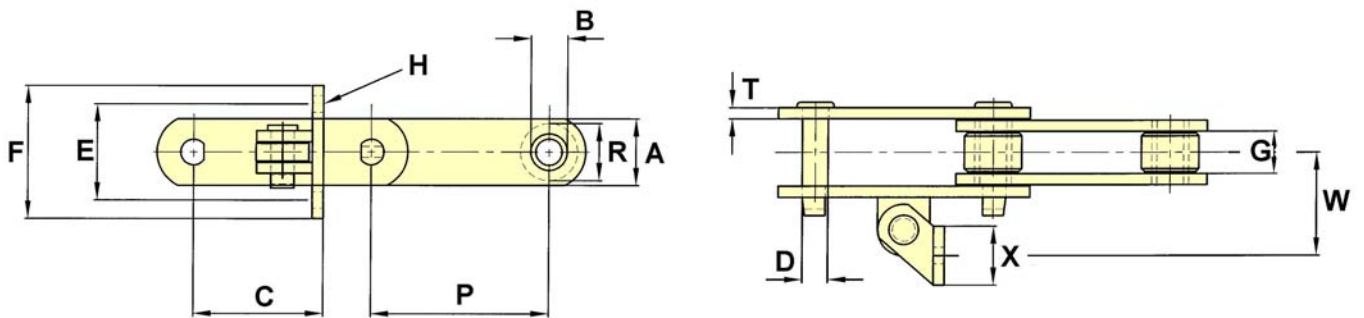
Drawing no. 126



CHAIN NO.	PITCH P	ALLOW. LOAD	U.T.S.	PIN DIA. D	ROLLER DIA. R	SIDEBAR DEPTH A	MAX. GEARING G	BUSH DIA. B	C	E	F	BOLT DIA. H	T	W	X
0904E	4.000	4,850	40,000	0.69	1.25	1.75	1.22	1.00	1.25	1.44	2.63	0.38	0.31	1.75	2.06

AS2 Attachments

Drawing no. 172

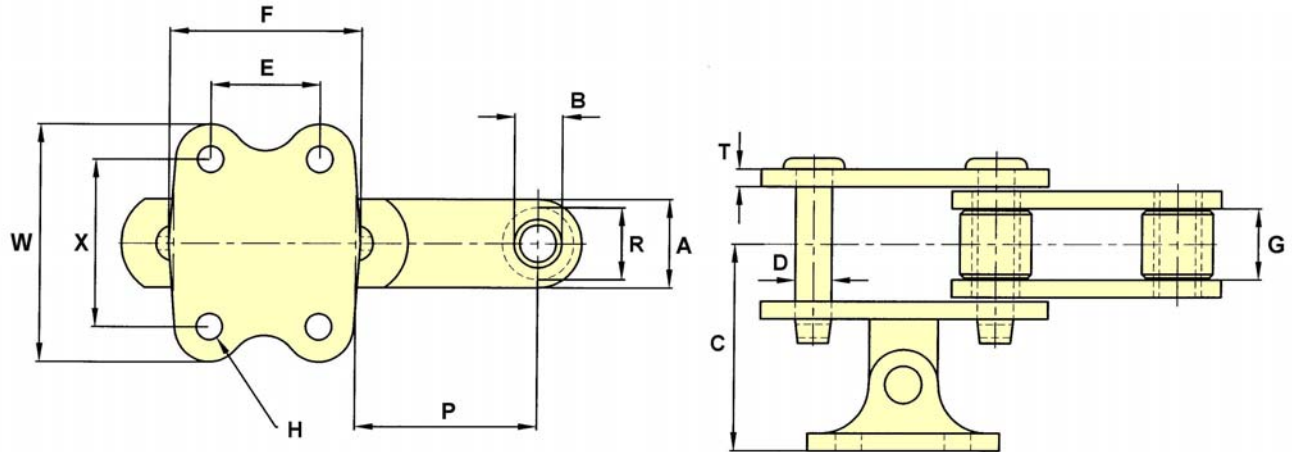


CHAIN NO.	PITCH P	ALLOW. LOAD	U.T.S.	PIN DIA. D	ROLLER DIA. R	SIDEBAR DEPTH A	MAX. GEARING G	BUSH DIA. B	C	E	F	BOLT DIA. H	T	W	X
0904E	4.00	4,850	40,000	0.69	1.25	1.75	1.22	1.00	3.13	3.25	4.25	0.38	0.31	3.06	1.75

Steel Elevator Chains

AS20 Attachments

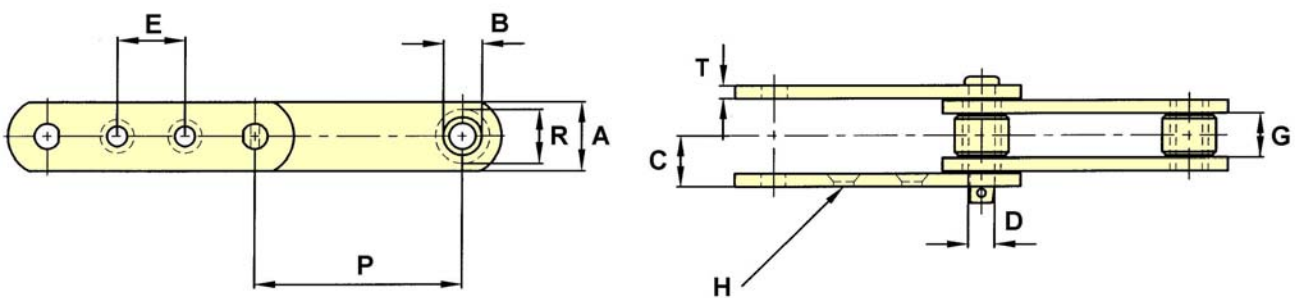
Drawing no. 128



CHAIN NO.	PITCH P	ALLOW. LOAD	U.T.S.	PIN DIA. D	ROLLER DIA. R	SIDEBAR DEPTH A	MAX. GEARING G	BUSH DIA. B	C	E	F	BOLT DIA. H	T	W	X
0904E	4.000	4,850	40,000	0.69	1.25	1.75	1.22	1.00	3.13	2.00	3.63	0.38	0.31	3.56	2.19
09060E	6.000	6,350	60,000	0.75	1.63	2.00	1.50	1.13	4.13	2.50	3.75	0.50	0.38	4.25	3.00
1796E	6.000	7,500	100,000	0.87	1.63	2.25	1.50	1.25	4.13	2.50	3.75	0.50	0.38	4.25	3.00

G2 Attachments

Drawing no. 28



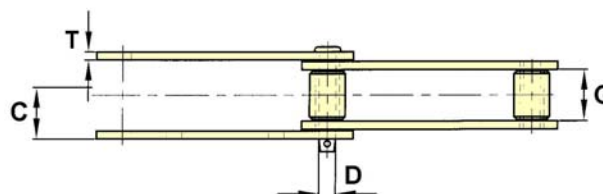
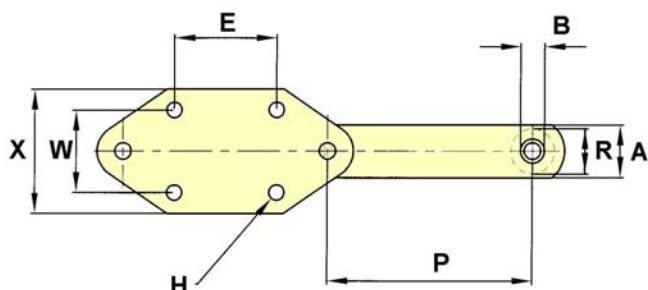
CHAIN NO.	PITCH P	ALLOW. LOAD	U.T.S.	PIN DIA. D	ROLLER DIA. R	SIDEBAR DEPTH A	MAX. GEARING G	BUSH DIA. B	C	E	BOLT DIA. H	T
3008	150MM	1,860	28,000	0.44	0.87	35MM	21MM	0.65	0.82	60MM	10MM	5MM

The tabular dimensions and weights are approximate and are not binding.
Design improvements may result in variation from the published figures and verification is recommended

Steel Elevator Chains

G4 Attachments

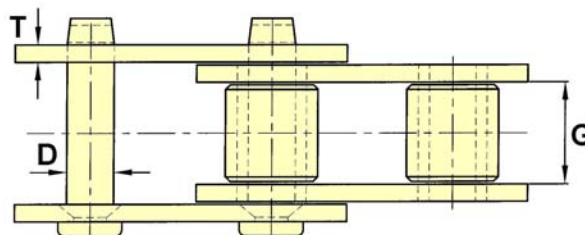
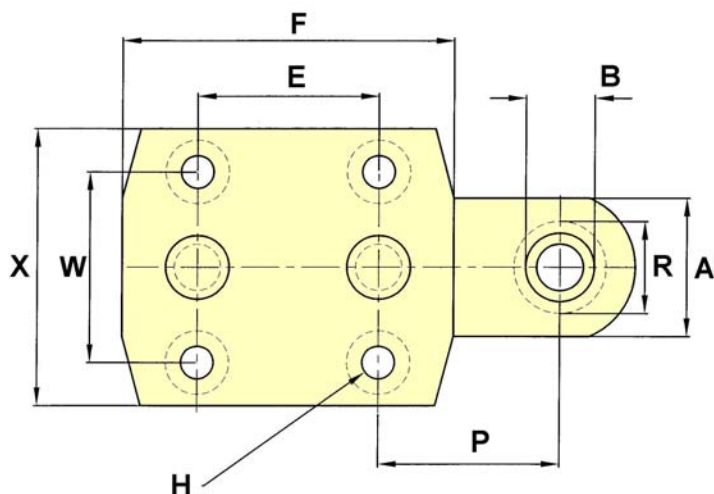
Drawing no. 134



CHAIN NO.	PITCH P	ALLOW. LOAD	U.T.S.	PIN DIA. D	ROLLER DIA. R	SIDEBAR DEPTH A	MAX. GEARING G	BUSH DIA. B	C	E	BOLT DIA. H	T	W	X
B5440	200MM	4,500	45,000	0.62	1.38	1.75	2.09	0.94	1.85	3.94	15MM	0.31	3.94	5.75
B5440	200MM	4,500	45,000	0.62	1.38	1.75	2.09	0.94	1.36	3.94	15MM	0.31	3.15	4.75
B5545*	250MM	20,500	224,000	1.38	2.75	4.00	3.00	1.88	2.79	140MM	18MM	0.63	100MM	6.00

* = PINS ARE OPPOSITE DIRECTION TO THAT SHOWN
(NORMALLY UTILISED IN THE CEMENT INDUSTRY)

Drawing no. 209



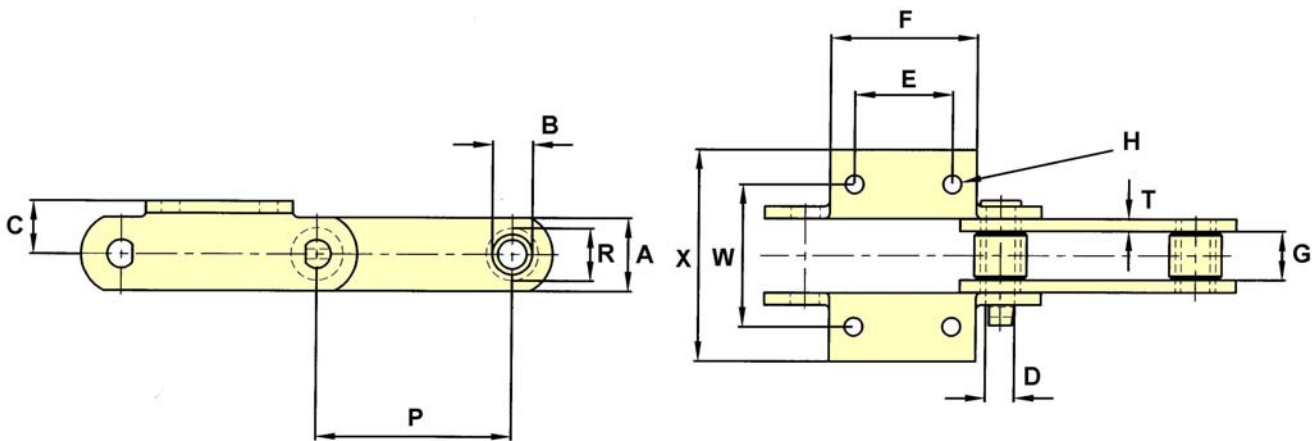
CHAIN NO.	PITCH P	ALLOW. LOAD	U.T.S.	PIN DIA. D	ROLLER DIA. R	SIDEBAR DEPTH A	MAX. GEARING G	BUSH DIA. B	E	F	BOLT DIA. H	T	W	X
B5112	100MM	10,450	110,200	1.00	2.00	3.00	2.00	1.50	100MM	7.19	18MM	0.38	105MM	6.00

The tabular dimensions and weights are approximate and are not binding.
Design improvements may result in variation from the published figures and verification is recommended

Steel Elevator Chains

K2 Attachments

Drawing no. 37



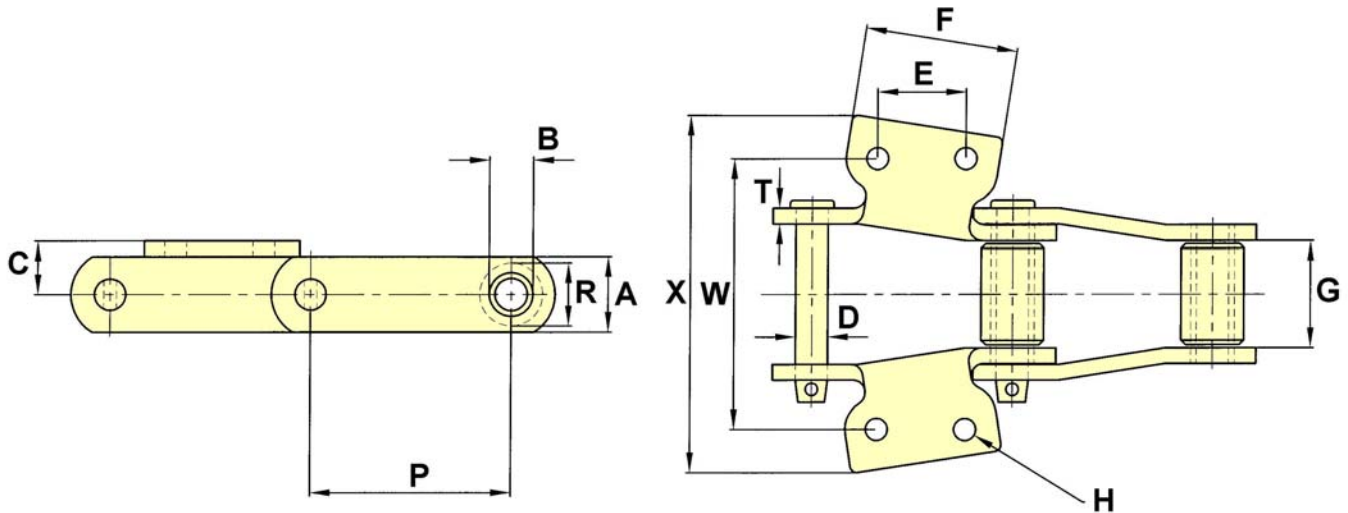
CHAIN NO.	PITCH P	ALLOW. LOAD	U.T.S.	PIN DIA. D	ROLLER DIA. R	SIDEBAR DEPTH A	MAX. GEARING G	BUSH DIA. B	C	E	F	BOLT DIA. H	T	W	X
0904E	4.000	4,850	40,000	0.69	1.25	1.75	1.22	1.00	1.25	1.44	2.63	0.38	0.31	3.50	4.13
B5246	6.000	6,350	40,000	0.63	1.50	1.50	2.13	1.00	1.00	1.75	2.88	0.38	0.38	5.31	6.66
09060E	6.000	6,350	60,000	0.75	1.63	2.00	1.50	1.13	1.63	3.00	4.50	0.50	0.38	4.38	6.75
B5231*	6.000	6,350	60,000	0.75	1.63	2.00	1.50	1.13	1.63	1.50	4.50	0.50	0.38	4.13	6.75
B5247	6.000	7,850	60,000	0.75	1.63	2.00	2.25	1.13	1.63	2.75	4.50	0.63	0.38	5.38	7.50
1796E	6.000	7,500	100,000	0.87	1.63	2.25	1.50	1.25	1.63	3.00	4.50	0.50	0.38	4.38	6.50

* = SUPPLIED WITH ATTACHMENTS ON OUTER SIDEBARS ONLY

Steel Elevator Chains

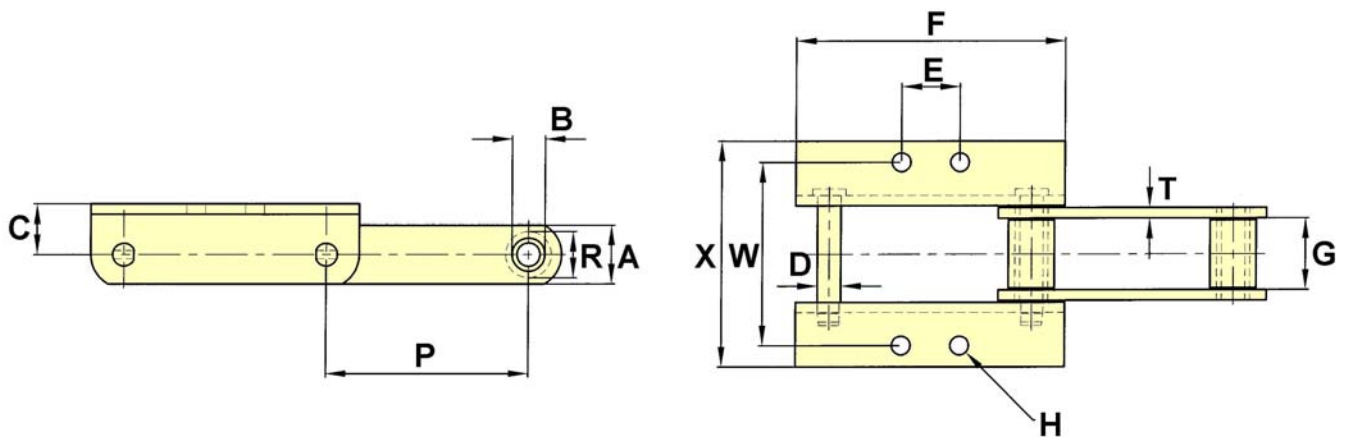
K2 Attachments

Drawing no. 170



CHAIN NO.	PITCH P	ALLOW. LOAD	U.T.S.	PIN DIA. D	ROLLER DIA. R	SIDEBAR DEPTH A	MAX. GEARING G	BUSH DIA. B	C	E	F	BOLT DIA. H	T	W	X
1422R	4.000	4,150	25,000	0.62	1.25	1.50	2.13	0.88	1.06	1.75	3.00	0.38	0.31	5.38	7.06
SS542	6.000	4,150	25,000	0.62	1.25	1.50	2.13	0.88	1.00	1.75	3.00	0.50	0.31	5.38	7.06

Drawing no. 173



CHAIN NO.	PITCH P	ALLOW. LOAD	U.T.S.	PIN DIA. D	ROLLER DIA. R	SIDEBAR DEPTH A	MAX. GEARING G	BUSH DIA. B	C	E	F	H	T	W	X
B5254 K4	6.000	7,200	85,000	0.75	1.63	2.25	2.00	1.13	1.63	2.31	8.50	0.63	0.38	6.31	8.03
B5299 K2	6.048	6,620	45,000	0.69	1.38	1.75	2.13	1.00	1.50	1.75	8.06	0.50	0.31	5.38	6.64

The tabular dimensions and weights are approximate and are not binding.
Design improvements may result in variation from the published figures and verification is recommended