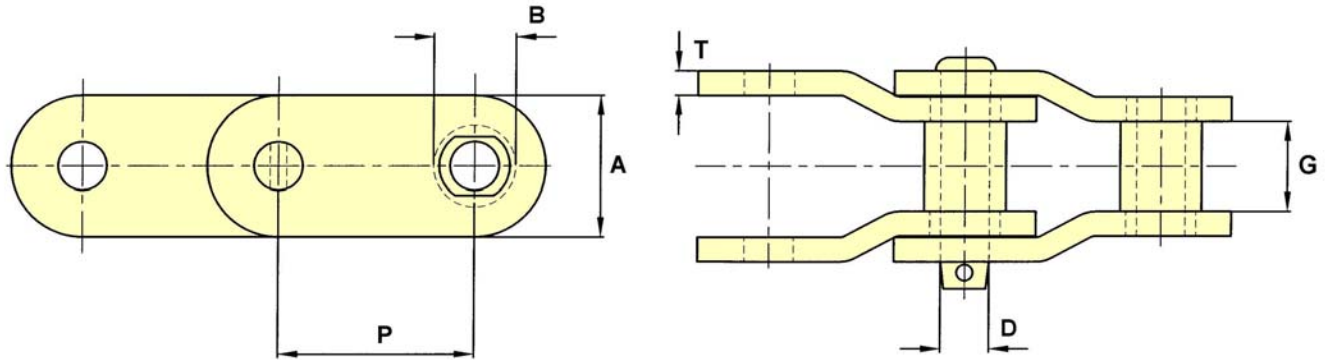


Steel Bushed Chains

Plain Chain

Cranked Sided

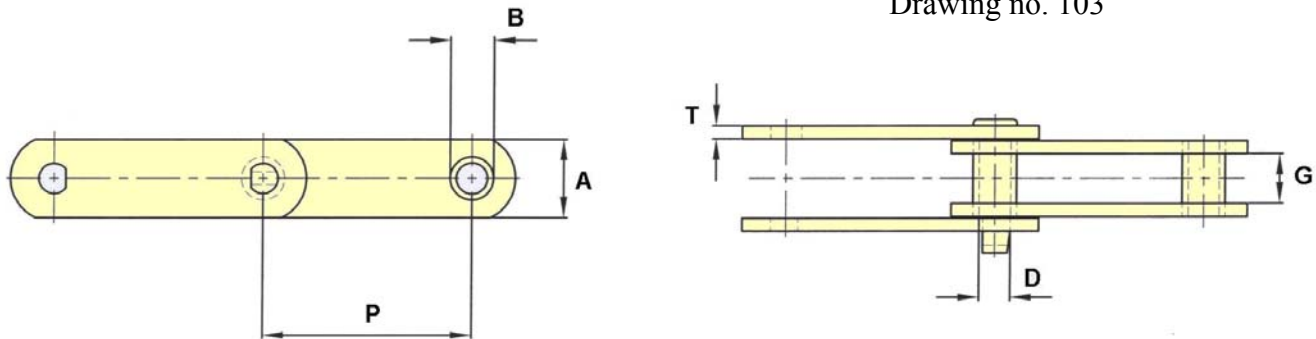
Drawing no. 116



CHAIN NO.	PITCH P	ALLOW. LOAD	U.T.S.	PIN DIA. D	SIDEBAR DEPTH A	MAX. GEARING G	BUSH DIA. B	SIDEBAR THICKNESS T
ER4103	3.075	4,920	44,000	0.75	1.75	1.25	1.25	0.31
SS100C	3.910	4,150	27,500	0.56	1.75	1.51	1.25	0.31
B5094	4.000	5,100	40,000	0.62	1.75	1.58	1.44	0.31
B5117	4.000	7,800	74,000	0.75	1.56	2.00	1.38	0.38

Straight Sided

Drawing no. 103

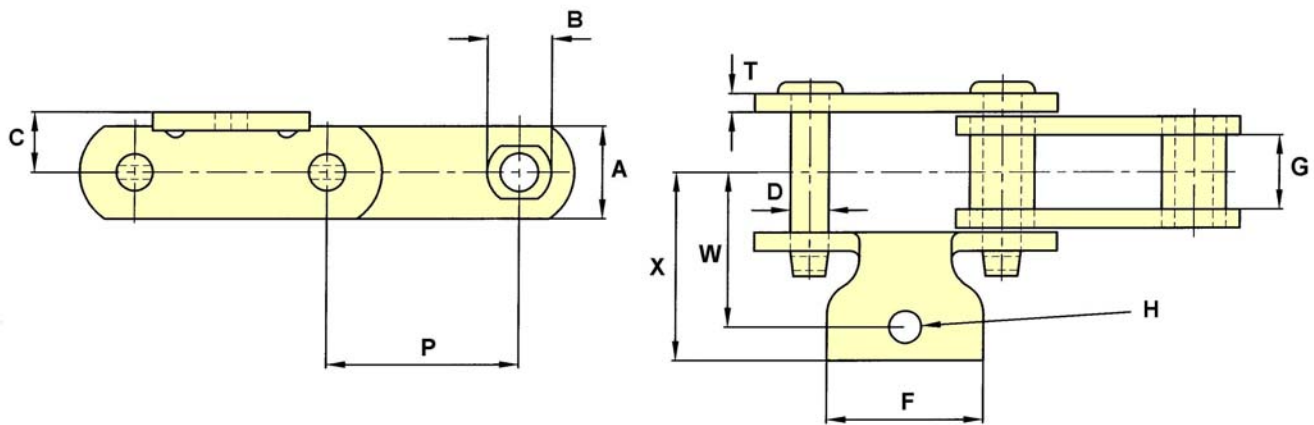


CHAIN NO.	PITCH P	ALLOW. LOAD	U.T.S.	PIN DIA. D	SIDEBAR DEPTH A	MAX. GEARING G	BUSH DIA. B	SIDEBAR THICKNESS T
SS104	4.050	6,200	25,000	0.62	1.50	2.25	1.19	0.31

Steel Bushed Chains

A1 Attachments

Drawing no. 119

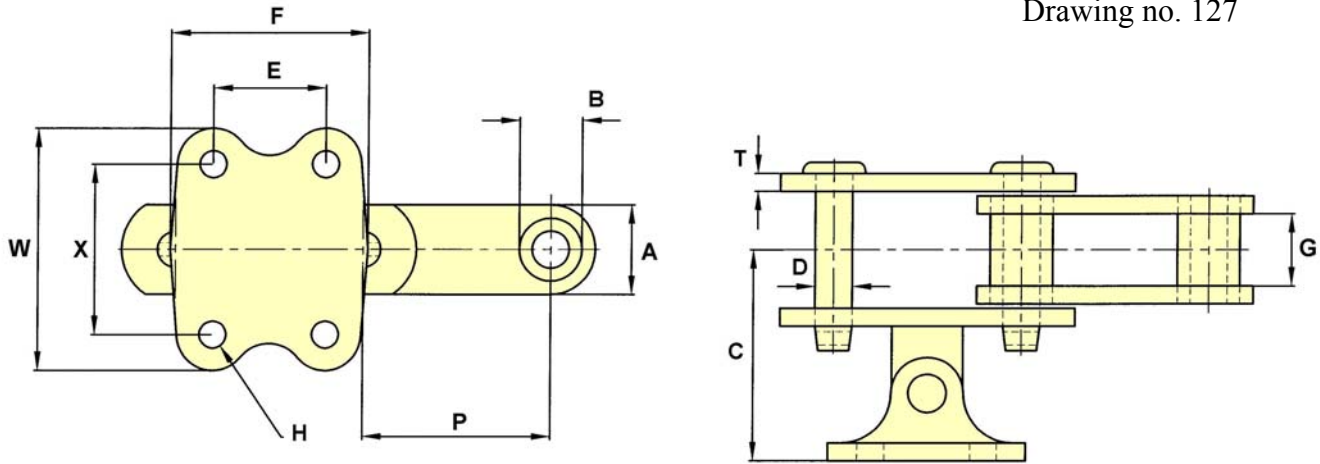


CHAIN NO.	PITCH P	ALLOW. LOAD	U.T.S.	PIN DIA. D	SIDEBAR DEPTH A	MAX GEARING G	BARREL DIA. B	C	F	BOLT DIA. H	T	W	X
SS188	2.609	2,800	25,000	0.50	1.25	1.06	0.87	0.81	2.13	0.38	0.25	1.87	1.56

Steel Bushed Chains

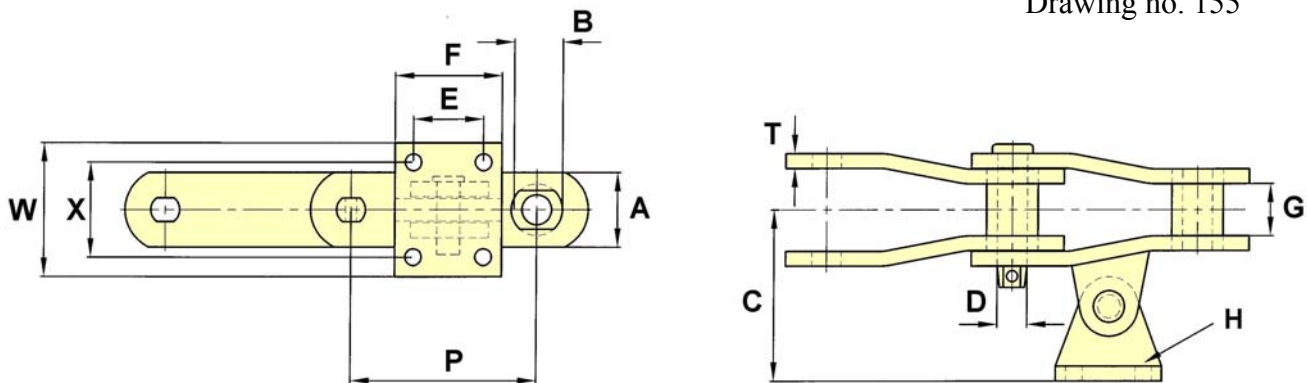
AS20 Attachments

Drawing no. 127



CHAIN NO.	PITCH P	ALLOW. LOAD	U.T.S.	PIN DIA. D	SIDEBAR DEPTH A	MAX GEARING G	BARREL DIA. B	C	E	F	BOLT DIA. H	T	W	X
SS188	2.609	2,800	25,000	0.50	1.25	1.06	0.88	2.94	1.56	2.75	0.31	0.25	3.19	2.19
SS102B	4.000	6,300	40,000	0.62	1.50	2.13	1.00	3.89	1.69	3.13	0.31	0.38	3.50	2.44
SS110	6.000	6,300	40,000	0.62	1.50	2.13	1.25	4.25	2.50	4.00	0.38	0.38	3.50	2.25
B5239	6.000	8,860	75,000	0.75	2.00	2.62	1.44	4.69	2.50	3.75	0.50	0.38	4.25	3.00

Drawing no. 155

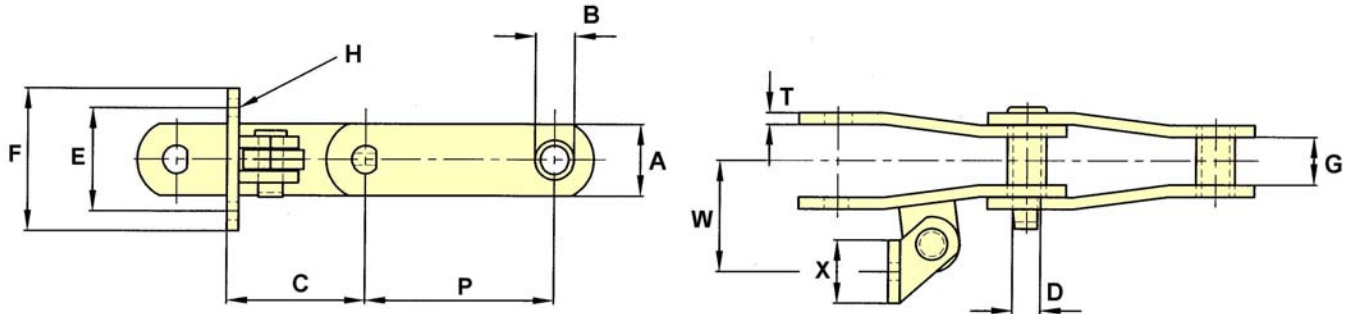


CHAIN NO.	PITCH P	ALLOW. LOAD	U.T.S.	PIN DIA. D	SIDEBAR DEPTH A	MAX GEARING G	BARREL DIA. B	C	E	F	H	T	W	X
B5314	6.300	9,625	100,000	1.00	2.50	1.75	1.75	5.75	2.38	3.62	0.50	0.50	4.50	3.19

Steel Bushed Chains

AS2 Attachments

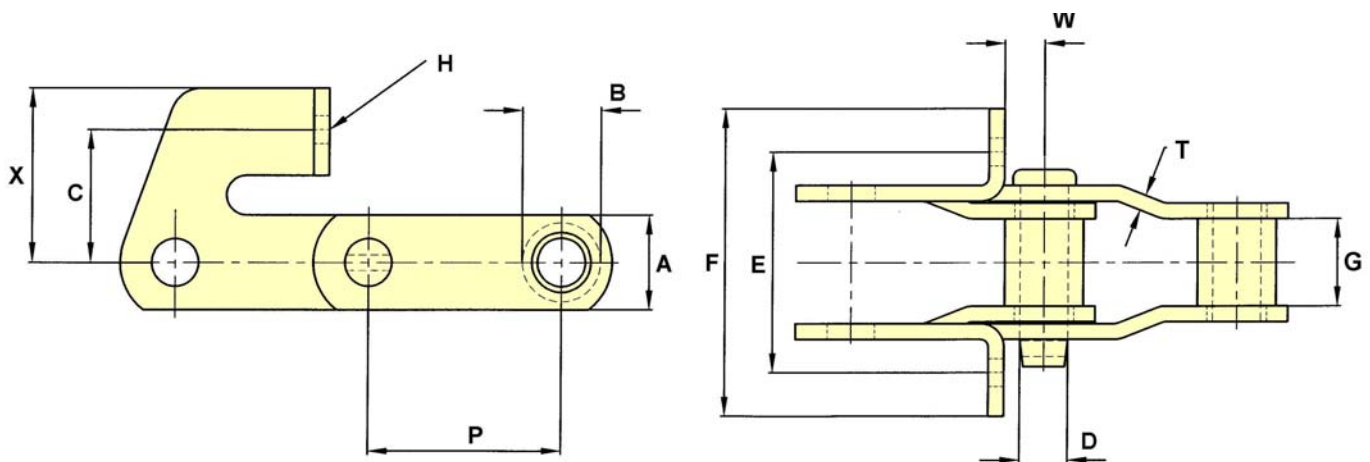
Drawing no. 60



CHAIN NO.	PITCH P	ALLOW. LOAD	U.T.S.	PIN DIA. D	SIDEBAR DEPTH A	MAX. GEARING G	BUSH DIA. B	C	E	F	BOLT DIA. H	T	W	X
B5111	4.760	8,860	75,000	0.75	2.00	2.62	1.44	4.76	3.50	5.00	0.50	0.38	4.00	2.00

F29 Attachment

Drawing no. 47

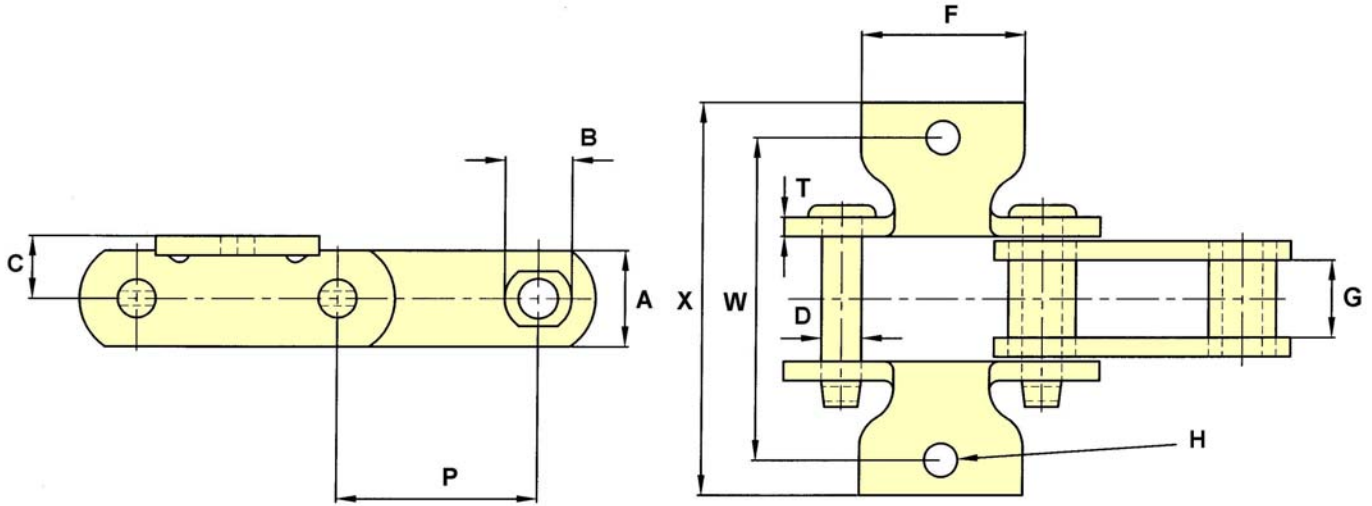


CHAIN NO.	PITCH P	ALLOW. LOAD	U.T.S.	PIN DIA. D	SIDEBAR DEPTH A	MAX. GEARING G	BUSH DIA. B	C	E	F	BOLT DIA. H	T	W	X
E2103	3.075	4,900	34,000	0.75	1.50	1.38	1.25	2.09	3.50	4.88	0.38	0.25	0.63	2.75

Steel Bushed Chains

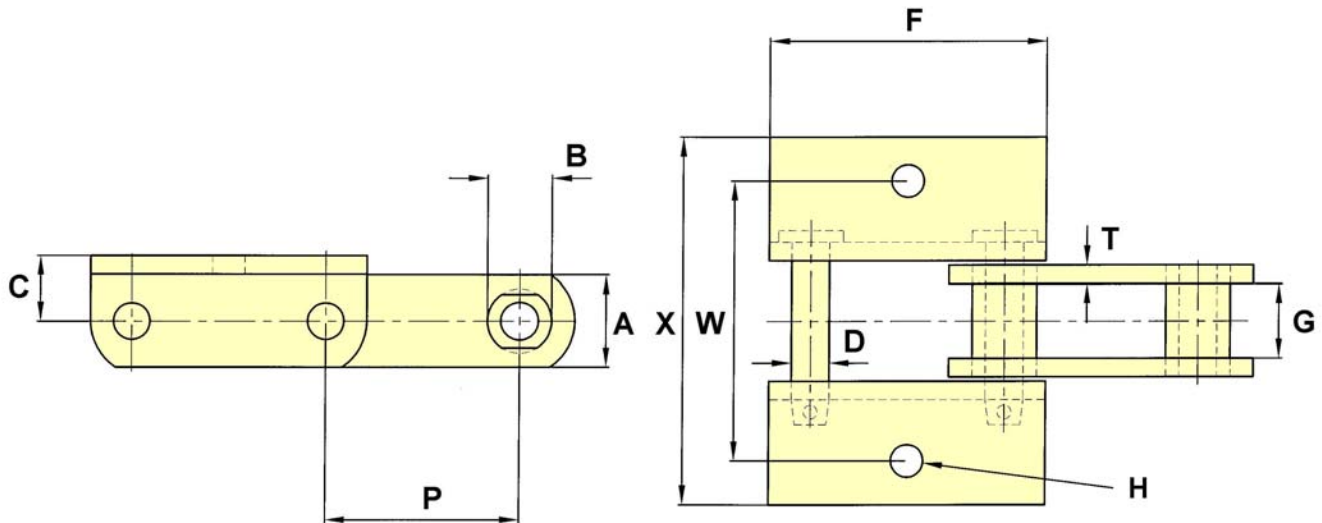
K1 Attachments

Drawing no. 36



CHAIN NO.	PITCH P	ALLOW. LOAD	U.T.S.	PIN DIA. D	SIDEBAR DEPTH A	MAX GEARING G	BARREL DIA. B	C	F	BOLT DIA. H	T	W	X
SS188	2.609	2,800	25,000	0.50	1.25	1.06	0.87	0.81	2.13	0.38	0.25	3.75	2.61

Drawing no. 152



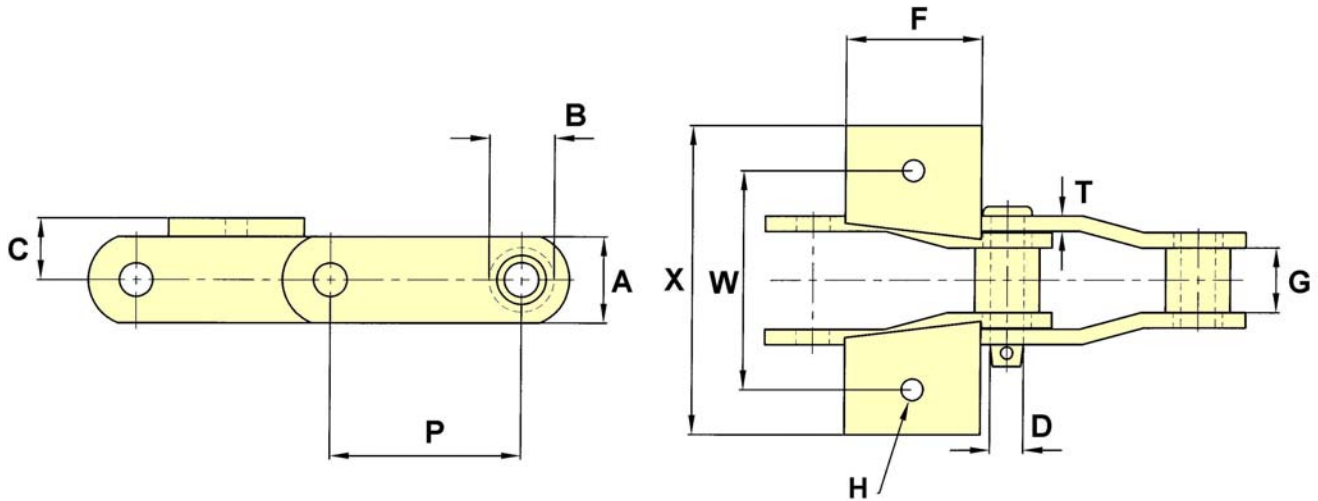
CHAIN NO.	PITCH P	ALLOW. LOAD	U.T.S.	PIN DIA. D	SIDEBAR DEPTH A	MAX GEARING G	BARREL DIA. B	C	F	BOLT DIA. H	T	W	X
SS578Y	2.630	2,780	27,500	0.50	1.25	1.06	0.87	0.87	3.75	0.38	0.25	3.81	5.00

The tabular dimensions and weights are approximate and are not binding.
Design improvements may result in variation from the published figures and verification is recommended.

Steel Bushed Chains

K1 Attachments

Drawing no. 151



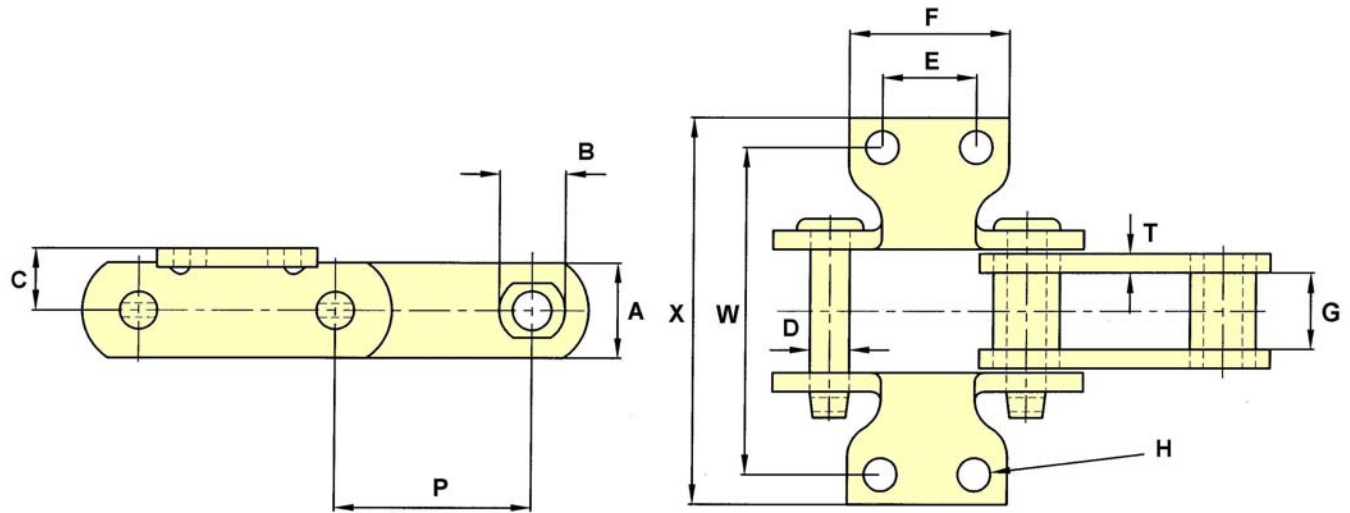
CHAIN NO.	PITCH P	ALLOW. LOAD	U.T.S.	PIN DIA. D	SIDEBAR DEPTH A	MAX GEARING G	BARREL DIA. B	C	F	BOLT DIA. H	T	W	X
SS100B	3.937	4,100	35,000	0.56	1.75	1.44	1.18	1.00	2.13	0.38	0.31	4.00	5.56

Steel Bushed Chains

K2 Attachments

Straight Sided

Drawing no. 38



CHAIN NO.	PITCH P	ALLOW. LOAD	U.T.S.	PIN DIA. D	SIDEBAR DEPTH A	MAX GEARING G	BARREL DIA. B	C	E	F	BOLT DIA. H	T	W	X
SS188	2.609	2,800	25,000	0.50	1.25	1.06	0.88	0.81	1.25	2.13	0.38	0.25	4.19	5.13
SS131	3.075	4,500	40,000	0.62	1.50	1.31	1.25	1.00	1.50	2.63	0.50	0.38	4.13	5.13
SS102B	4.000	6,300	40,000	0.62	1.50	2.13	1.00	1.00	1.75	2.69	0.38	0.38	5.31	6.66
SS111	4.760	8,850	75,000	0.75	2.00	2.63	1.44	1.50	2.31	3.63	0.38	0.38	6.25	8.06
SS110	6.000	6,300	40,000	0.62	1.50	2.13	1.25	1.00	1.75	2.88	0.38	0.38	5.31	6.66
B5239	6.000	8,860	75,000	0.75	2.00	2.62	1.44	1.50	2.31	4.50	0.50	0.38	6.25	8.38

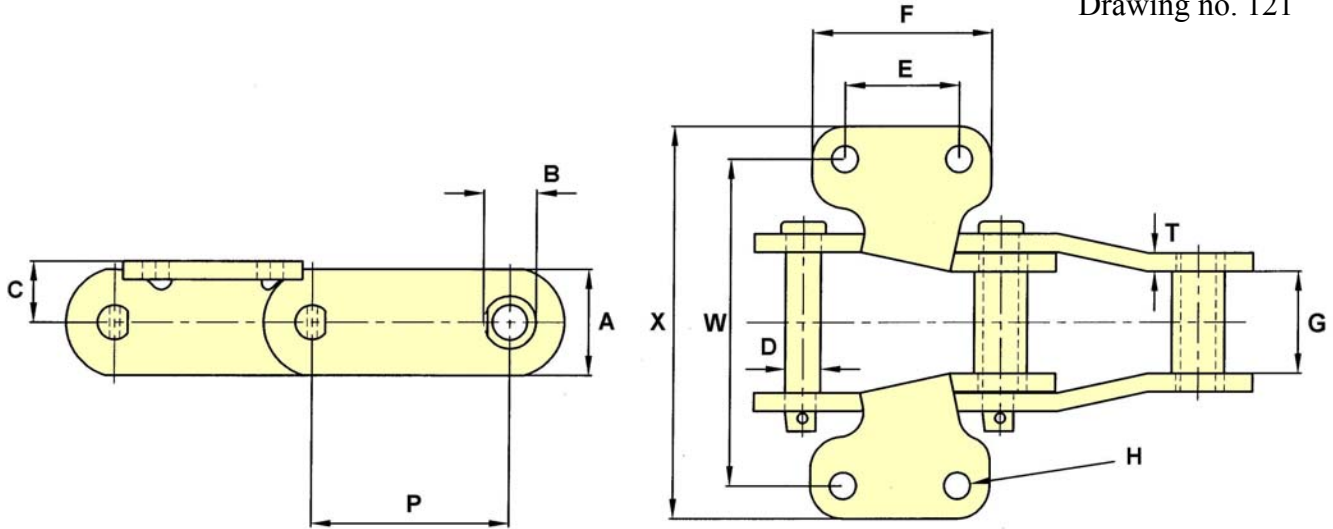
SS102B CAN BE SUPPLIED WITH 1.1/2" DIA. ROLLERS IF REQUIRED

Steel Bushed Chains

K2 Attachments

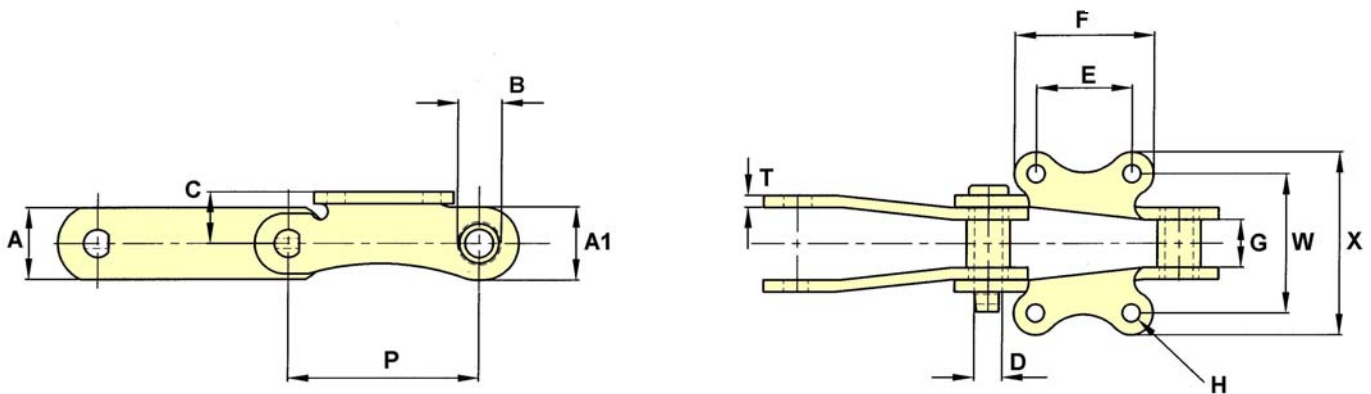
Cranked Sided

Drawing no. 121



CHAIN NO.	PITCH P	ALLOW. LOAD	U.T.S.	PIN DIA. D	SIDEBAR DEPTH A	MAX GEARING G	BARREL DIA. B	C	E	F	BOLT DIA. H	T	W	X
7140X	6.060	15,800	70,000	1.06	3.25	3.13	1.63	1.88	3.50	5.50	0.62	0.56	10.00	12.00

Drawing no. 113



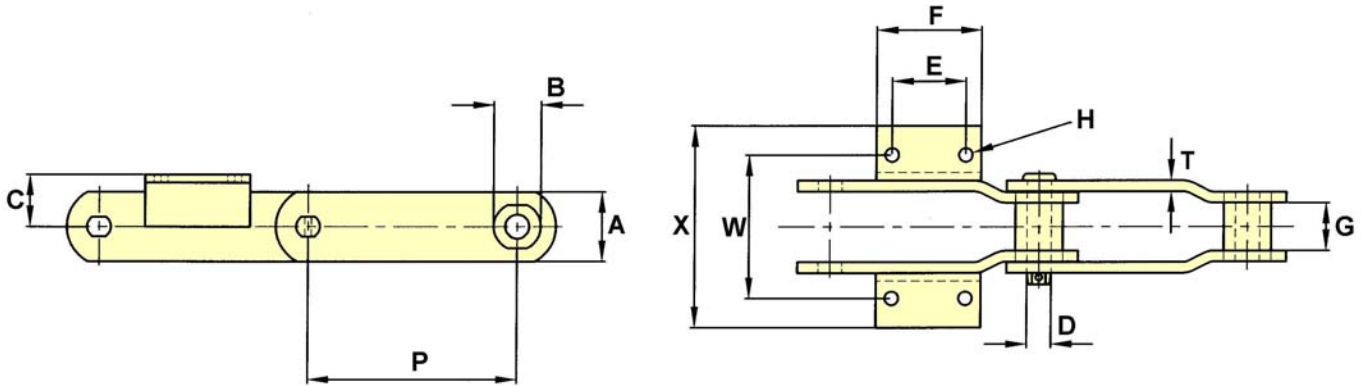
CHAIN NO.	PITCH P	ALLOW. LOAD	U.T.S.	PIN DIA. D	PLAIN SIDEBAR DEPTH A	ATTACH. SIDEBAR DEPTH A1	MAX. GEARING G	BUSH DIA. B	C	E	F	BOLT DIA. H	T	W	X
B5252	6.000	7,500	100,000	0.87	2.25	2.30	1.50	1.38	1.63	3.00	4.38	0.50	0.38	4.38	5.75

The tabular dimensions and weights are approximate and are not binding.
Design improvements may result in variation from the published figures and verification is recommended.

Steel Bushed Chains

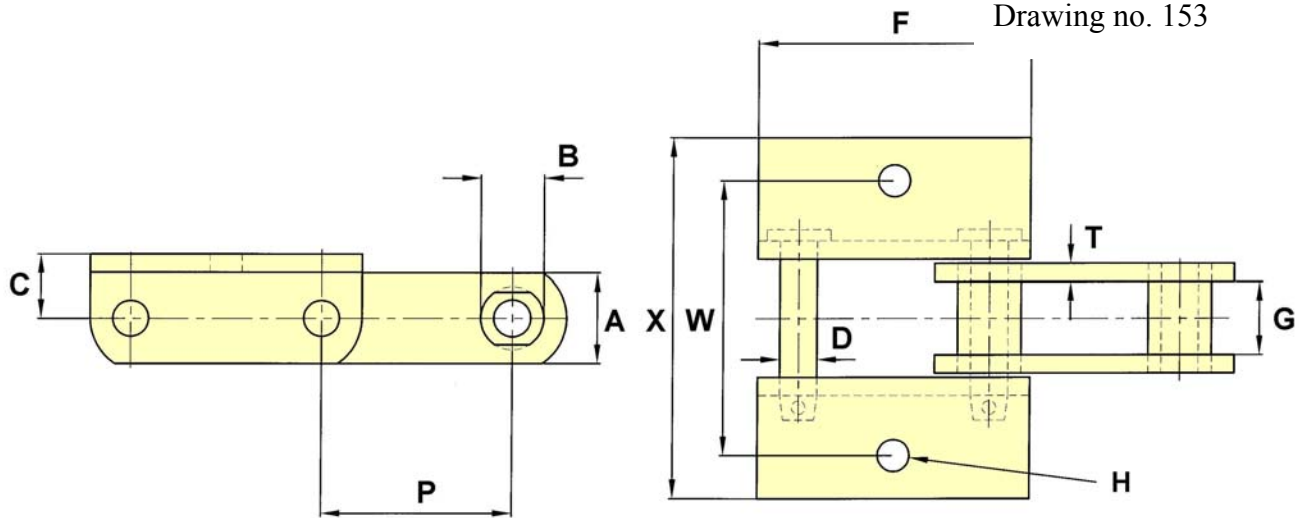
K2 Attachments

Drawing no. 11



CHAIN NO.	PITCH P	ALLOW. LOAD	U.T.S.	PIN DIA. D	SIDEBAR DEPTH A	MAX. GEARING G	BUSH DIA. B	C	E	F	BOLT DIA. H	T	W	X
C69A	12.000	21,000	300,000	1.38	4.00	2.75	2.75	3.00	4.21	6.00	18MM	0.63	8.25	11.22
C84	9.000	17,500	250,000	1.25	3.25	2.87	2.50	3.00	3.00	4.50	16MM	0.56	8.25	11.09

Drawing no. 153

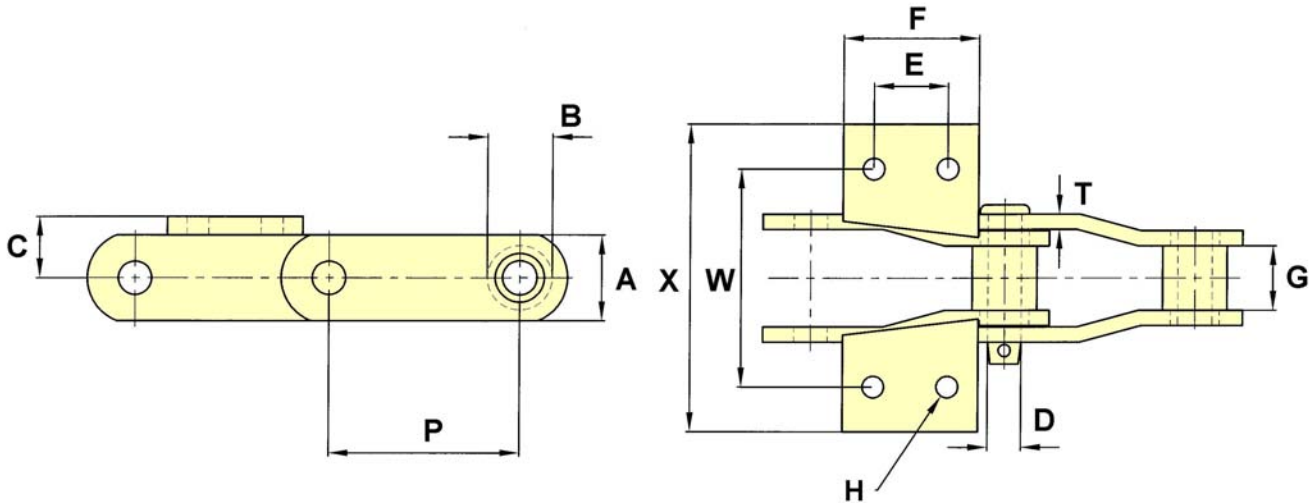


CHAIN NO.	PITCH P	ALLOW. LOAD	U.T.S.	PIN DIA. D	SIDEBAR DEPTH A	MAX. GEARING G	BUSH DIA. B	C	E	F	BOLT DIA. H	T	W	X
B5288	6.054	17,000	75,000	1.00	3.25	3.50	1.75	1.88	3.50	9.05	0.75	0.56	10.00	12.60

Steel Bushed Chains

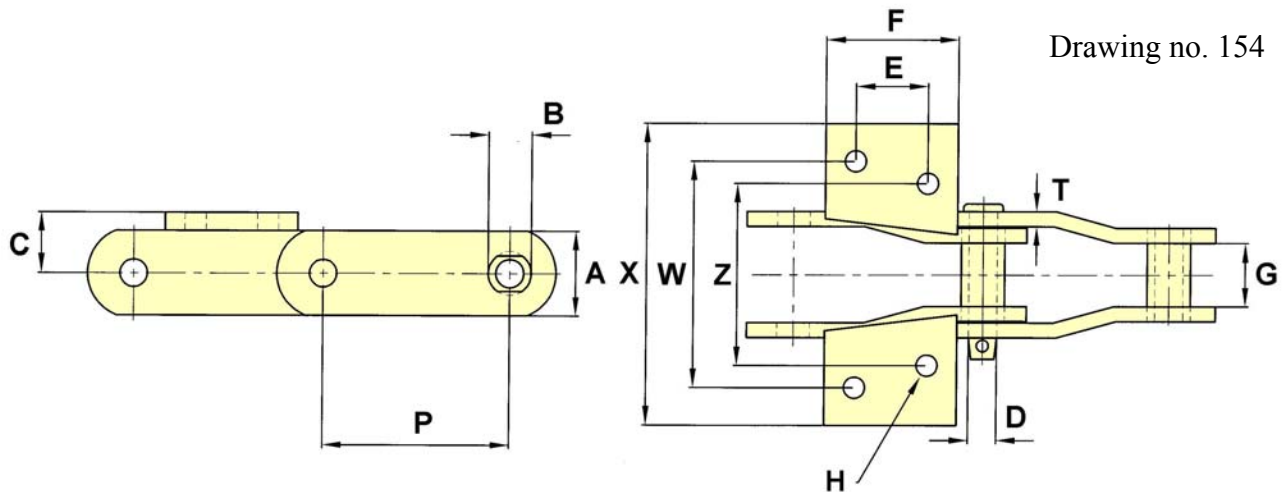
K2 Attachments

Drawing no. 150



CHAIN NO.	PITCH P	ALLOW. LOAD	U.T.S.	PIN DIA. D	SIDEBAR DEPTH A	MAX. GEARING G	BUSH DIA. B	C	E	F	BOLT DIA. H	T	W	X
SS100B	3.937	4,100	35,000	0.56	1.75	1.44	1.18	1.00	1.00	2.13	0.38	0.31	4.00	5.56
SS100D	3.937	4,600	45,000	0.69	1.75	1.31	1.31	1.25	1.50	2.75	0.38	0.31	4.44	6.26

Drawing no. 154



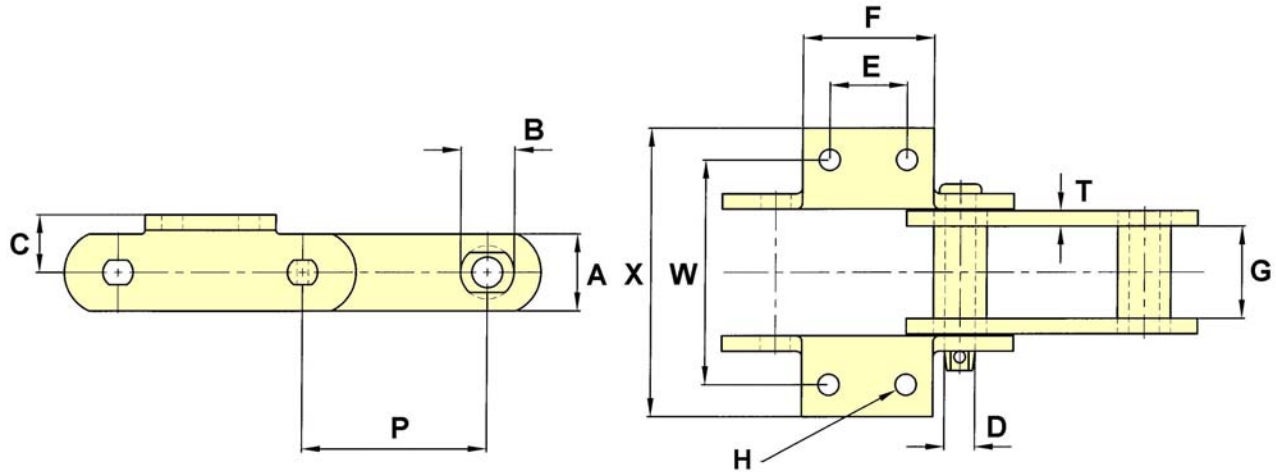
CHAIN NO.	PITCH P	ALLOW. LOAD	U.T.S.	PIN DIA. D	SIDEBAR DEPTH A	MAX. GEARING G	BUSH DIA. B	C	E	F	BOLT DIA. H	T	W	X	Z
B5274	6.040	9,000	45,000	0.87	2.00	1.94	1.38	1.50	2.75	4.50	0.56	0.50	6.13	7.38	4.87

The tabular dimensions and weights are approximate and are not binding.
Design improvements may result in variation from the published figures and verification is recommended.

Steel Bushed Chains

K2 Attachments

Drawing no. 158

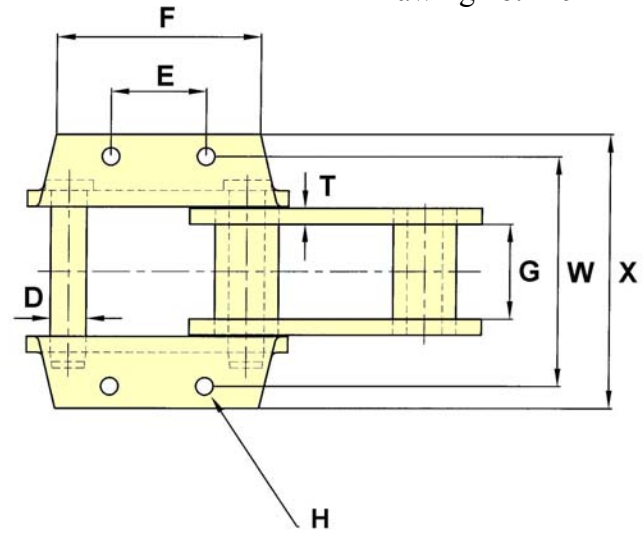
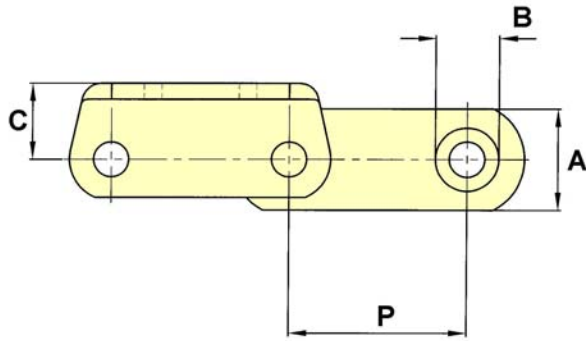


CHAIN NO.	PITCH P	ALLOW. LOAD	U.T.S.	PIN DIA. D	SIDEBAR DEPTH A	MAX. GEARING G	BUSH DIA. B	C	E	F	BOLT DIA. H	T	W	X
S856	6.000	14,000	100,000	1.00	2.50	3.00	1.75	1.87	2.50	4.25	0.62	0.50	7.25	9.50

Steel Bushed Chains

K24 Attachments

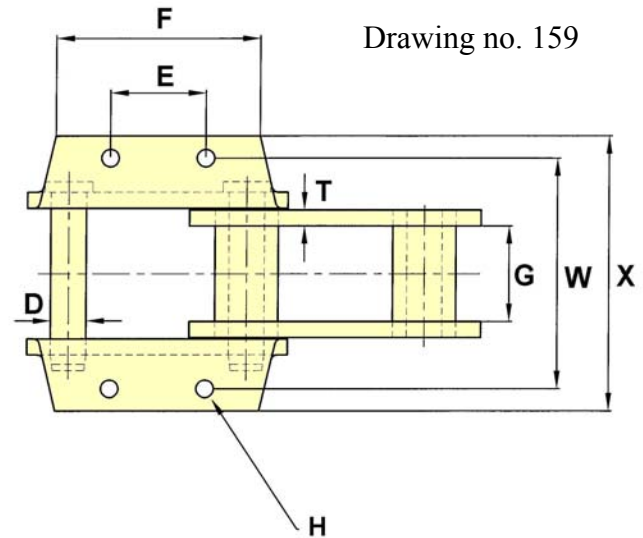
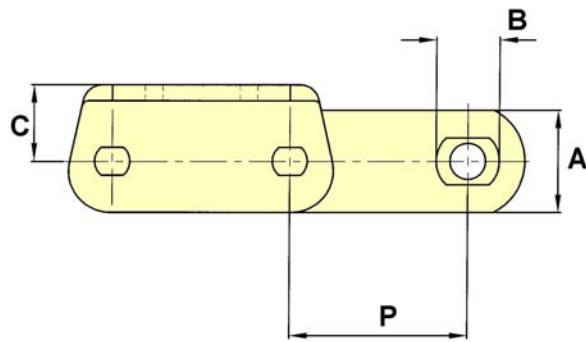
Drawing no. 149



CHAIN NO.	PITCH P	ALLOW. LOAD	U.T.S.	PIN DIA. D	SIDEBAR DEPTH A	MAX. GEARING G	BUSH DIA. B	C	E	F	BOLT DIA. H	T	W	X
S857	6.000	14,000	100,000	1.00	3.25	3.00	1.75	2.50	2.75	6.87	0.62	0.50	7.75	9.25

ATTACHMENTS CANNOT BE FITTED CONTINUOUSLY

Drawing no. 159



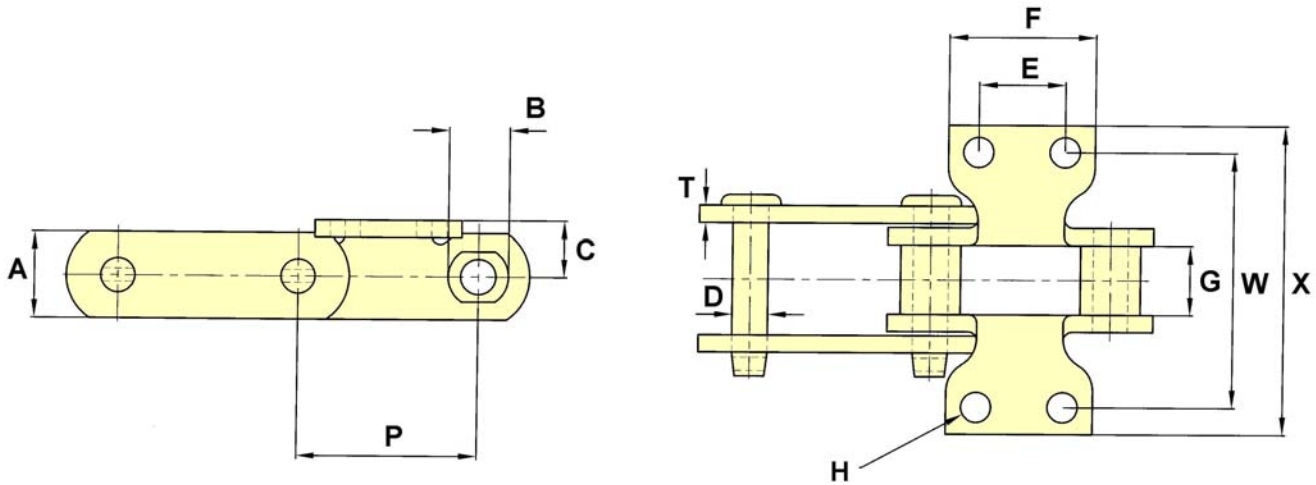
CHAIN NO.	PITCH P	ALLOW. LOAD	U.T.S.	PIN DIA. D	SIDEBAR DEPTH A	MAX. GEARING G	BUSH DIA. B	C	E	F	BOLT DIA. H	T	W	X
S856	6.000	14,000	100,000	1.00	2.50	3.00	1.75	1.87	2.50	6.87	0.50	0.50	7.25	9.50

ATTACHMENTS CANNOT BE FITTED CONTINUOUSLY

Steel Bushed Chains

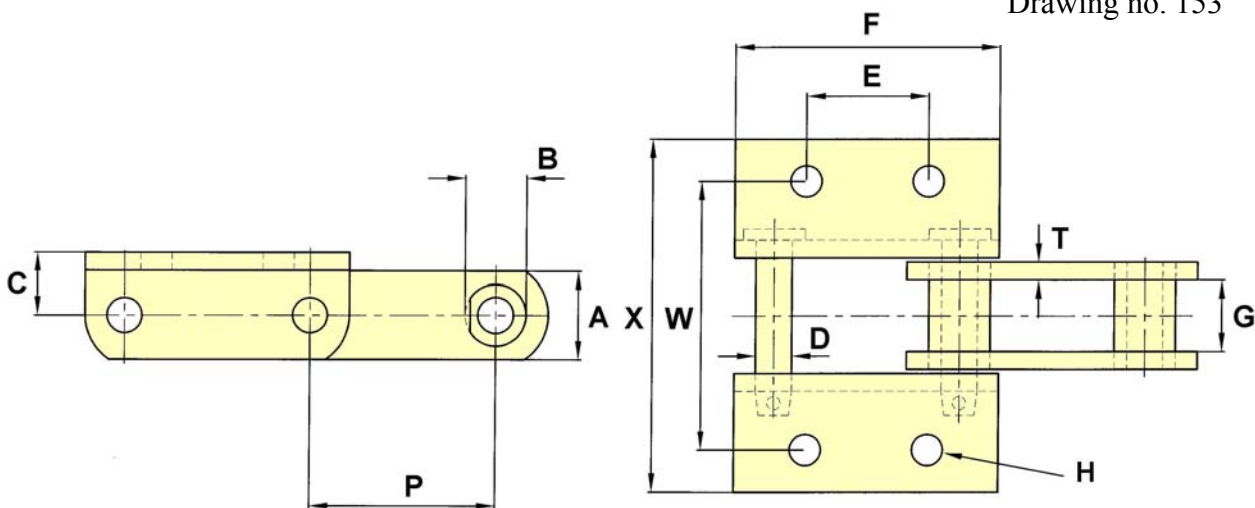
K24 Attachments

Drawing no. 156



CHAIN NO.	PITCH P	ALLOW. LOAD	U.T.S.	PIN DIA. D	SIDEBAR DEPTH A	MAX GEARING G	BARREL DIA. B	C	E	F	BOLT DIA. H	T	W	X
SS188	2.609	2,800	25,000	0.50	1.25	1.06	0.88	0.81	1.25	2.13	0.38	0.25	3.75	4.53

Drawing no. 153



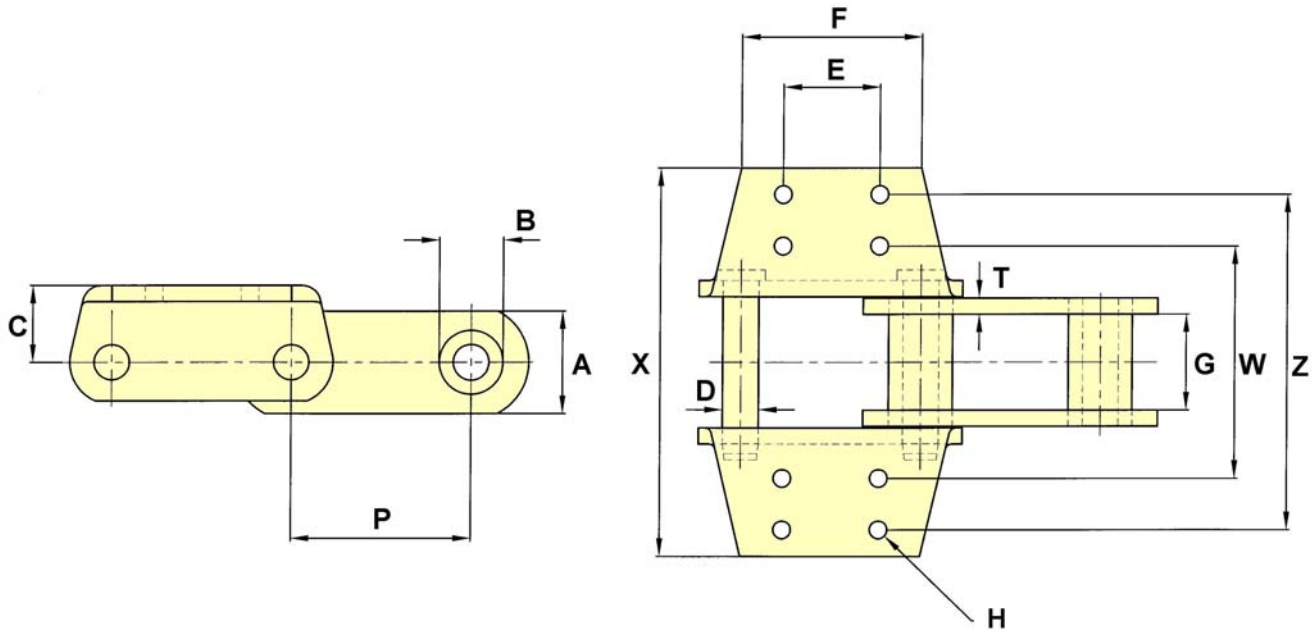
CHAIN NO.	PITCH P	ALLOW. LOAD	U.T.S.	PIN DIA. D	SIDEBAR DEPTH A	MAX GEARING G	BARREL DIA. B	C	E	F	BOLT DIA. H	T	W	X
SS102B	4.000	6,300	40,000	0.62	1.50	2.13	1.00	1.00	1.75	5.75	0.38	0.38	5.31	6.66

The tabular dimensions and weights are approximate and are not binding.
Design improvements may result in variation from the published figures and verification is recommended.

Steel Bushed Chains

K44 Attachments

Drawing no. 146



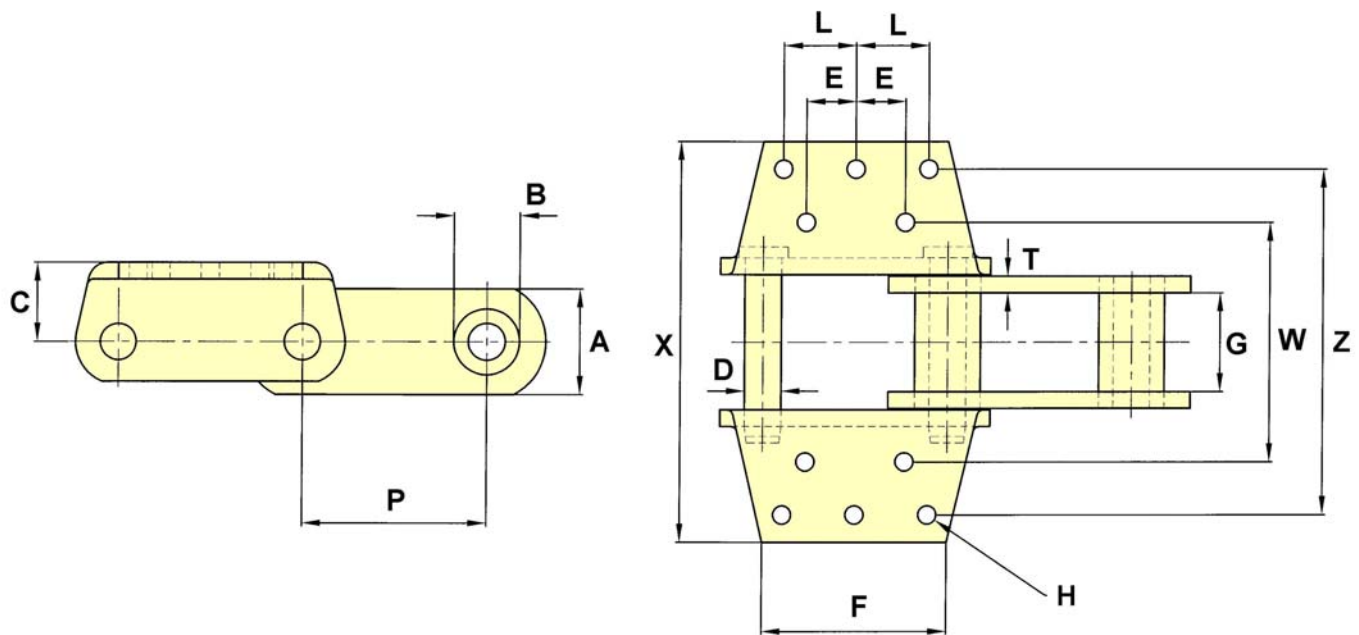
CHAIN NO.	PITCH P	ALLOW. LOAD	U.T.S.	PIN DIA. D	SIDEBAR DEPTH A	MAX GEARING G	BARREL DIA. B	C	E	F	BOLT DIA. H	T	W	X	Z
S857	6.000	14,000	100,000	1.00	3.25	3.00	1.75	2.50	3.50	5.94	0.50	0.50	7.00	14.00	12.00

ATTACHMENTS CANNOT BE FITTED CONTINUOUSLY

Steel Bushed Chains

K443 Attachments

Drawing no. 145



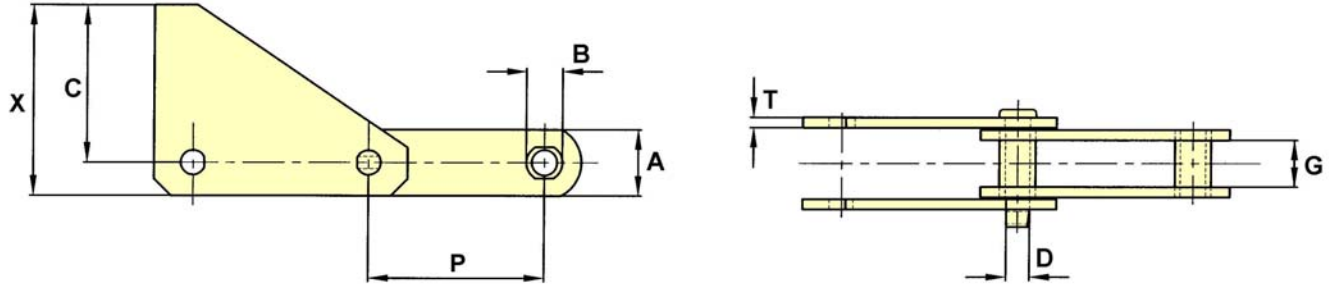
CHAIN NO.	PITCH P	ALLOW. LOAD	U.T.S.	PIN DIA. D	SIDEBAR DEPTH A	MAX GEARING G	BARREL DIA. B	C	E	F	BOLT DIA. H	L	T	W	X	Z
S864	7.000	22,000	155,000	1.25	4.00	3.75	2.38	3.00	1.87	7.00	0.62	2.75	0.62	9.00	15.00	13.00
S984	7.000	24,000	325,000	1.38	4.00	3.75	2.50	3.00	1.87	7.00	0.62	2.75	0.62	9.00	15.00	13.00

ATTACHMENTS CANNOT BE FITTED CONTINUOUSLY

Steel Bushed Chains

S1 Attachments

Drawing no. 51

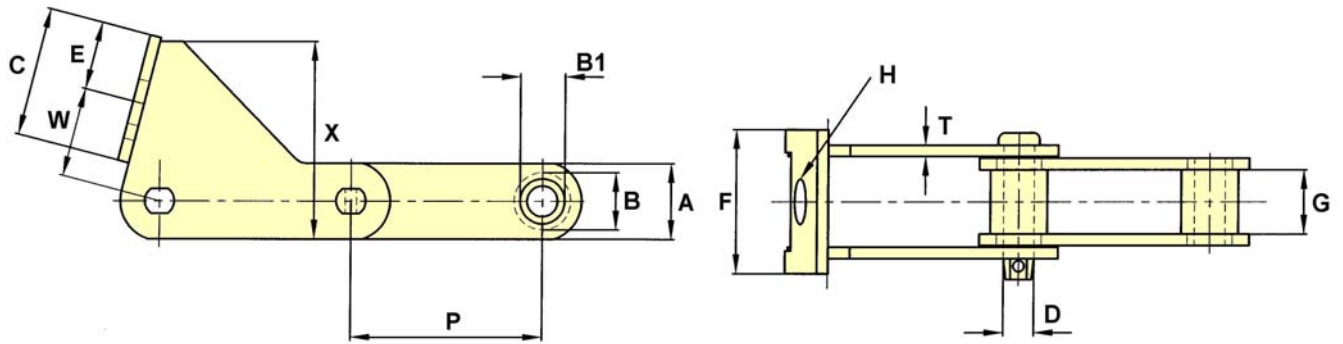


CHAIN NO.	PITCH P	ALLOW. LOAD	U.T.S.	PIN DIA. D	SIDEBAR DEPTH A	MAX. GEARING G	BUSH DIA. B	C	T	X
S82	3.075	4,300	35,000	0.62	1.50	1.37	1.19	5.19	0.25	5.94
SS102B	4.000	6,300	40,000	0.62	1.50	2.13	1.00	3.75	0.38	4.50
SS110	6.000	6,300	40,000	0.62	1.50	2.13	1.25	4.25	0.38	5.50
B5298	6.000	6,550	90,000	0.75	2.38	1.55	1.38	5.00	0.38	6.19
B5143	135MM	5,575	55,000	0.75	2.00	1.50	1.10	4.88	0.31	5.88

Steel Bushed Chains

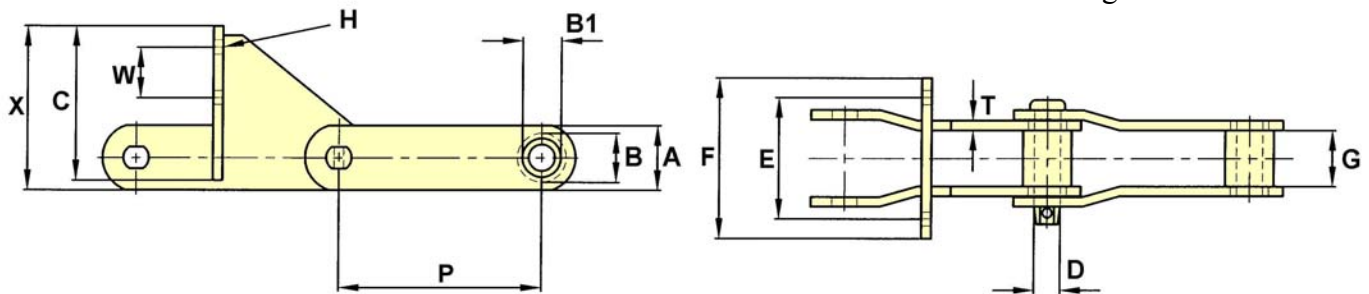
Pusher Attachments

Drawing no. 13



CHAIN NO.	PITCH P	ALLOW. LOAD	U.T.S.	PIN DIA. D	SIDEBAR DEPTH A	MAX. GEARING G	BUSH DIA. B	BUSH SHOULDER B1	C	E	F	H	T	W	X
E160	160MM	10,300	100,000	1.00	2.25	2.20	48MM	1.50	4.25	2.25	4.75	1.50	0.38	2.93	6.50
EC160A	160MM	10,300	100,000	1.00	2.25	2.20	48MM	1.50	4.25	2.25	4.75	1.50	0.38	2.93	6.50
506	6.050	10,330	170,000	1.00	2.75	1.94	48MM	1.50	3.75	1.75	3.75	36MM	0.50	3.00	6.00

Drawing no. 12

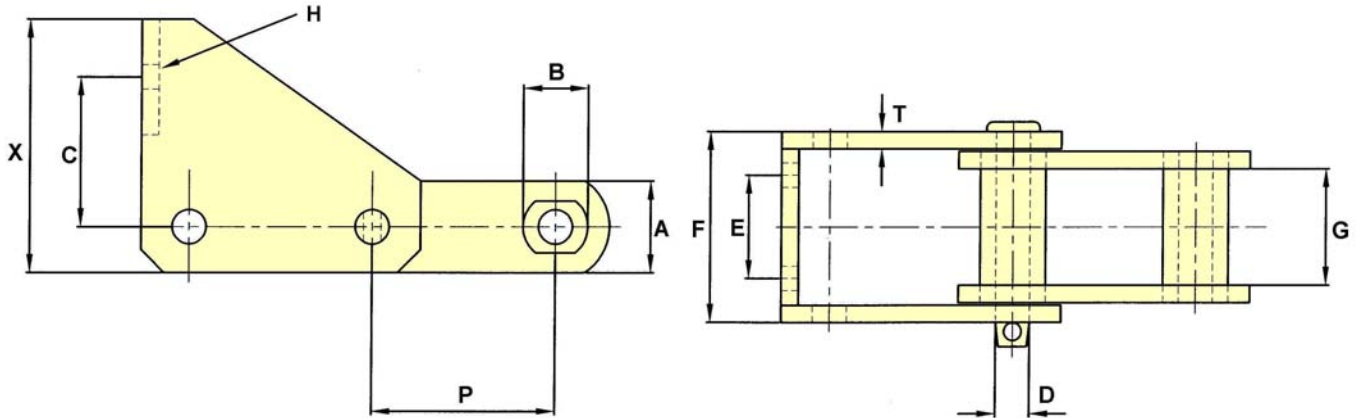


CHAIN NO.	PITCH P	ALLOW. LOAD	U.T.S.	PIN DIA. D	SIDEBAR DEPTH A	MAX. GEARING G	BUSH DIA. B	BUSH SHOULDER B1	C	E	F	H	T	W	X
EC160A	160MM	10,300	100,000	1.00	2.50	2.20	48MM	1.50	3.50	108MM	140MM	12MM	0.38	50MM	6.33
EC160A	160MM	10,300	100,000	1.00	2.50	2.20	48MM	1.50	3.50	120MM	160MM	12MM	0.38	50MM	6.33
EC200	200MM	10,300	100,000	1.00	2.50	2.20	48MM	1.50	6.00	120MM	6.25	12MM	0.38	50MM	6.38

Steel Bushed Chains

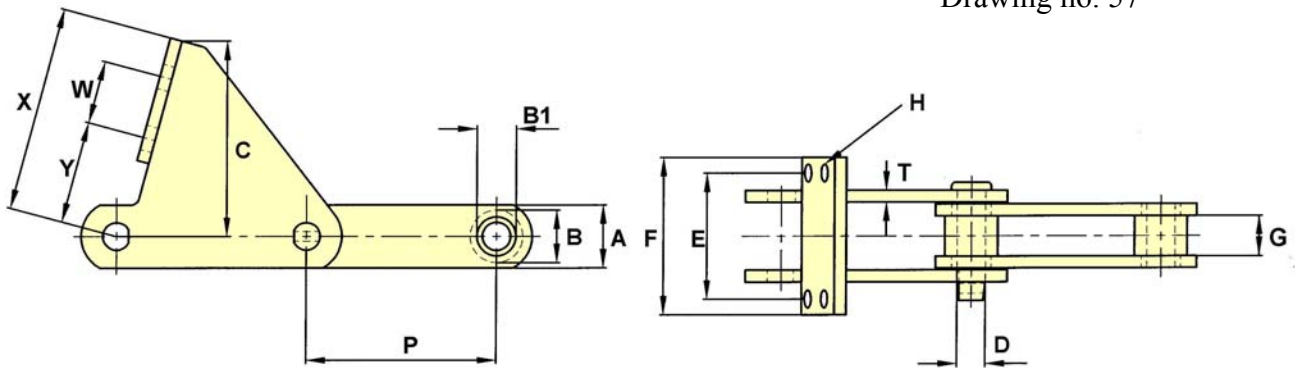
Pusher Attachments

Drawing no. 55



CHAIN NO.	PITCH P	ALLOW. LOAD	U.T.S.	PIN DIA. D	SIDEBAR DEPTH A	MAX. GEARING G	BUSH DIA. B	C	E	F	BOLT DIA. H	T	X
B5099	4.000	9,500	75,000	0.75	2.00	2.62	1.44	3.25	2.25	4.16	0.50	0.38	5.50

Drawing no. 57



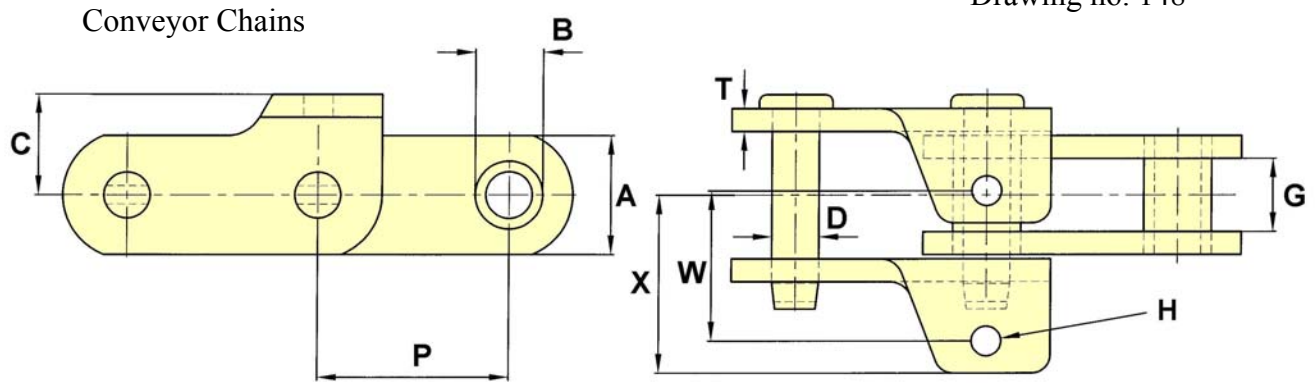
CHAIN NO.	PITCH P	ALLOW. LOAD	U.T.S.	PIN DIA. D	SIDEBAR DEPTH A	MAX. GEARING G	BUSH DIA. B	BUSH SHOULDER B1	C	E	F	BOLT DIA. H	T	W	X	Y
1796*	6.000	7,500	100,000	0.87	2.25	1.50	1.75	1.25	3.88	120MM	160MM	12MM	0.38	50MM	5.06	2.11
D2184	6.000	7,100	80,000	0.87	2.00	1.38	1.25	-	6.28	4.00	5.00	0.50	0.38	2.00	6.50	3.25

PUSHER FACES ARE VERTICAL

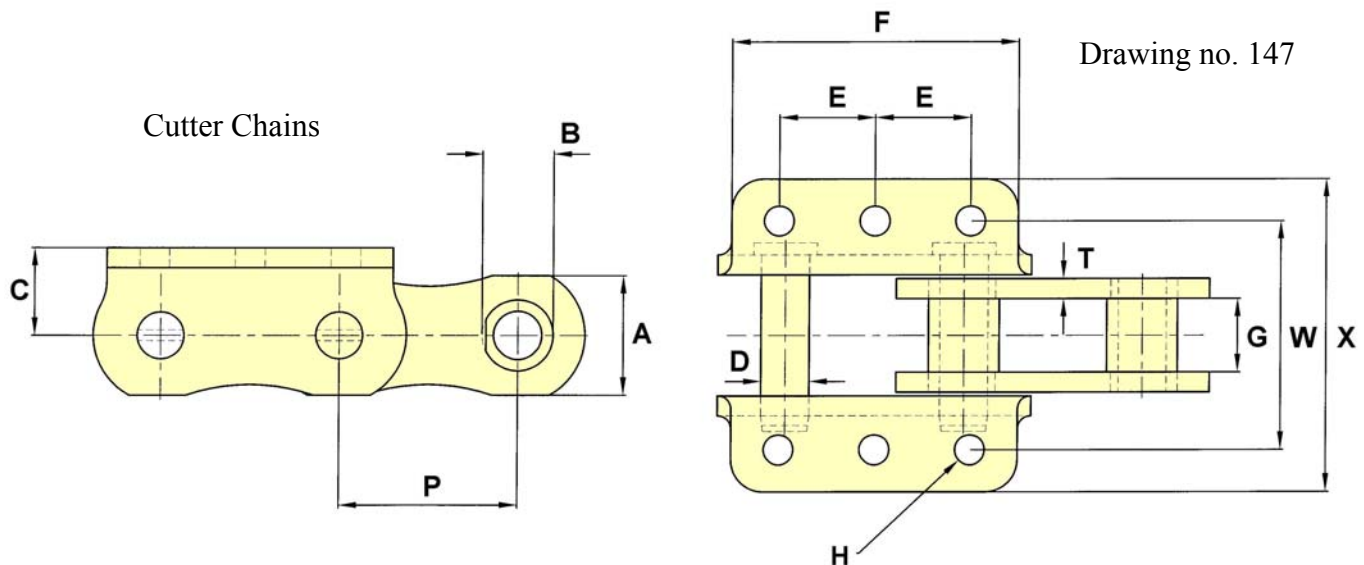
The tabular dimensions and weights are approximate and are not binding.
Design improvements may result in variation from the published figures and verification is recommended.

Steel Bushed Chains

Tower Chains



CHAIN NO.	PITCH P	ALLOW. LOAD	U.T.S.	PIN DIA. D	SIDEBAR DEPTH A	MAX. GEARING G	BUSH DIA. B	C	BOLT DIA. H	T	W	X
B5023	2.609	3,700	60,000	0.63	1.63	1.00	0.94	1.38	0.38	0.31	1.88	2.44



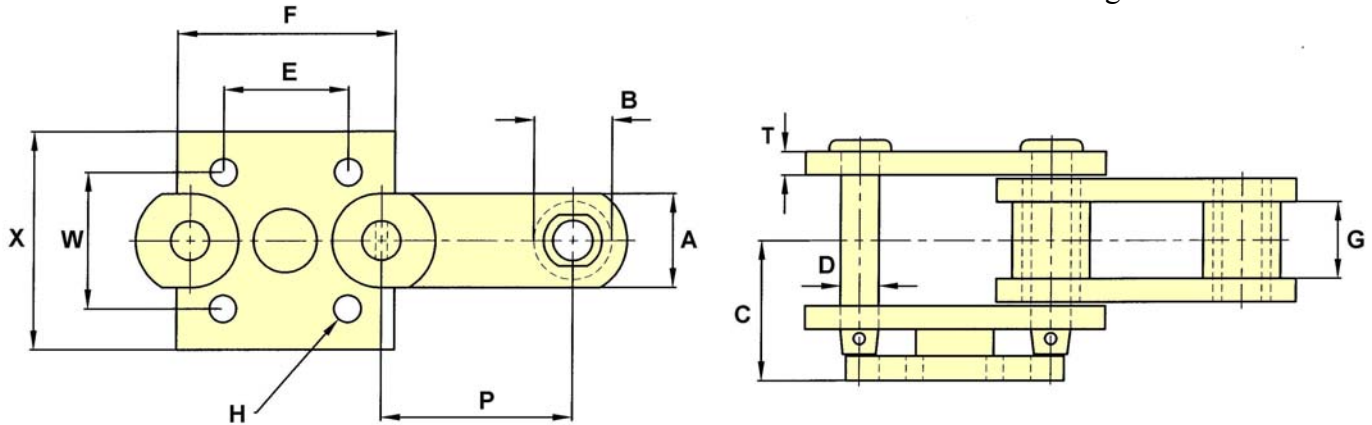
CHAIN NO.	PITCH P	ALLOW. LOAD	U.T.S.	PIN DIA. D	SIDEBAR DEPTH A	MAX. GEARING G	BUSH DIA. B	C	E	F	BOLT DIA. H	T	W	X
B2024	2.800	4,700	60,000	0.75	1.88	1.16	1.13	1.38	1.50	4.50	0.44	0.31	3.50	4.88

The tabular dimensions and weights are approximate and are not binding.
Design improvements may result in variation from the published figures and verification is recommended.

Steel Bushed Chains

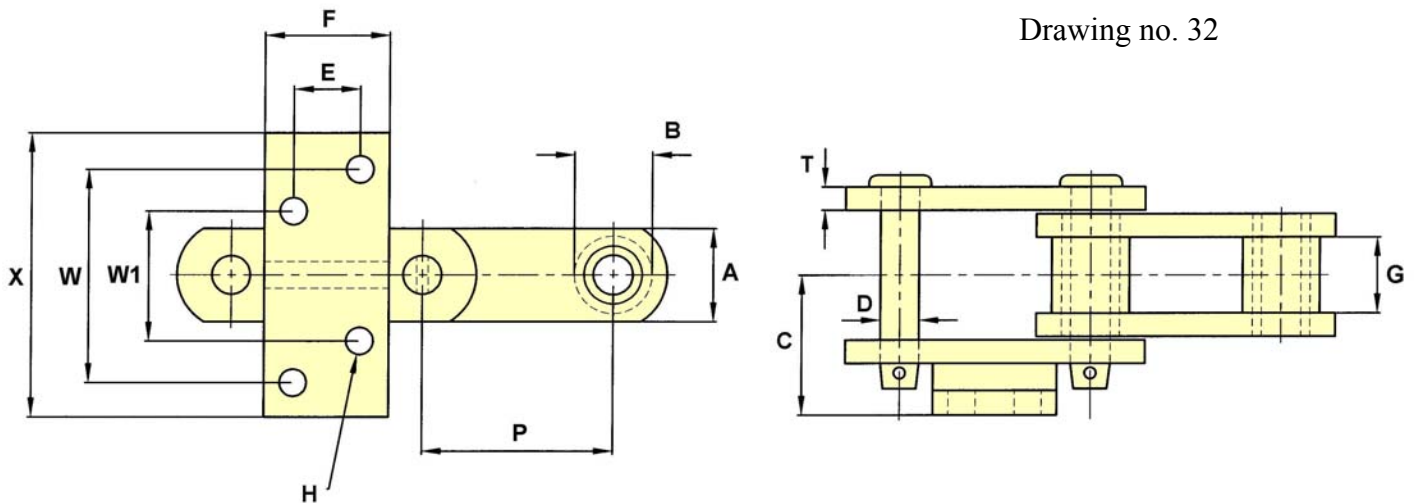
G20 Attachment

Drawing no. 30



CHAIN NO.	PITCH P	ALLOW. LOAD	U.T.S.	PIN DIA. D	SIDEBAR DEPTH A	MAX. GEARING G	BUSH DIA. B	C	E	F	BOLT DIA. H	W	X
SS131	3.075	4,500	40,000	0.62	1.50	1.31	1.25	2.25	2.00	3.50	0.38	2.19	3.50

Drawing no. 32



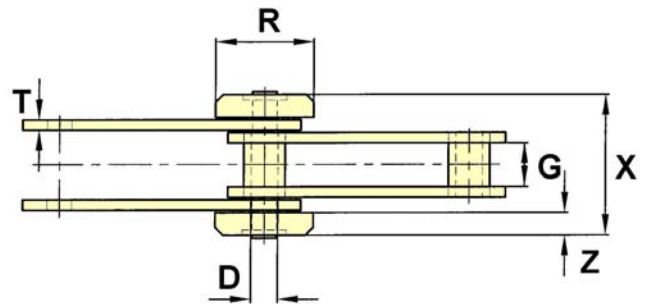
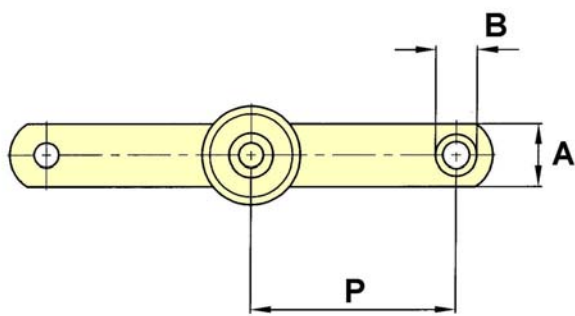
CHAIN NO.	PITCH P	ALLOW. LOAD	U.T.S.	PIN DIA. D	SIDEBAR DEPTH A	MAX. GEARING G	BUSH DIA. B	C	E	F	BOLT DIA. H	W	W1	X
SS103	3.075	4,100	25,000	0.62	1.50	1.90	1.22	2.06	0.63	2.00	0.38	3.00	1.75	4.00

The tabular dimensions and weights are approximate and are not binding.
Design improvements may result in variation from the published figures and verification is recommended.

Steel Bushed Chains

Outboard Roller

Drawing no. 144

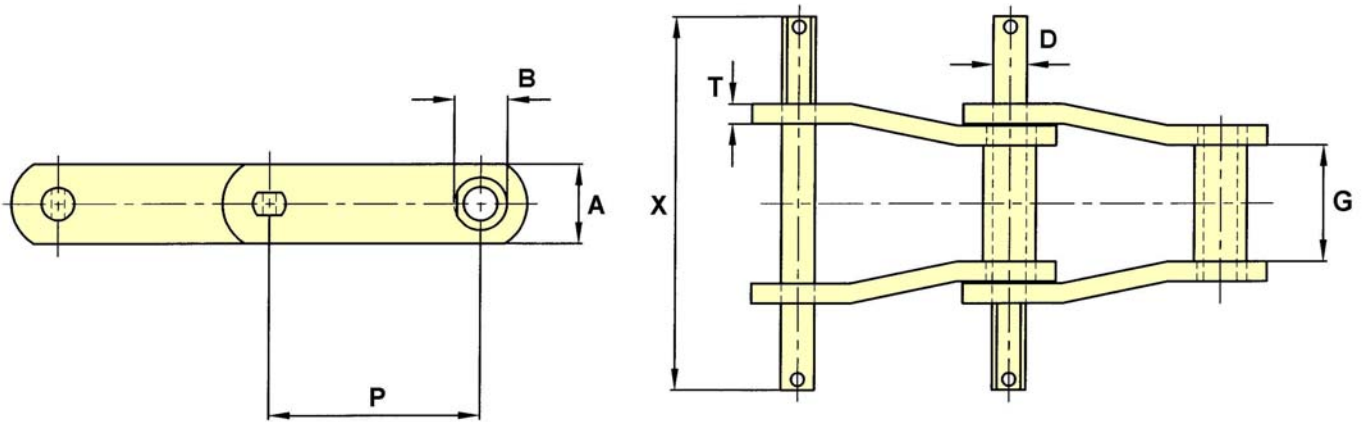


CHAIN NO.	PITCH P	ALLOW. LOAD	U.T.S.	PIN DIA. D	SIDEBAR DEPTH A	MAX. GEARING G	BUSH DIA. B	R	X	Z
B125	125MM	3,600	24,000	0.62	1.50	1.03	1.00	60MM	3.19	0.54

Steel Bushed Chains

Extended Pin

Drawing no. 48



CHAIN NO.	PITCH P	ALLOW. LOAD	U.T.S.	PIN DIA. D	SIDEBAR DEPTH A	MAX. GEARING G	BUSH DIA. B	T	X
B5063	4.000	6,300	50,000	0.62	1.50	2.13	1.00	0.38	7.06
B5109	4.000	6,400	67,000	0.62	1.50	2.19	1.00	0.38	7.03