

Slats

Style C



Style D



Style A



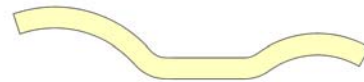
Style DB



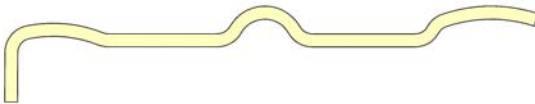
Style G



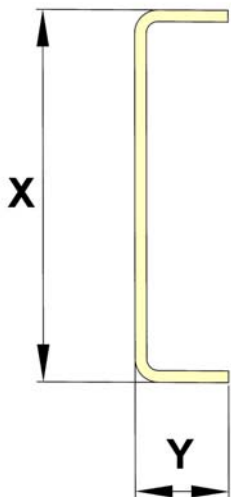
Style DK



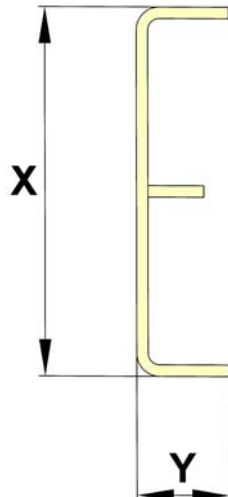
Style H



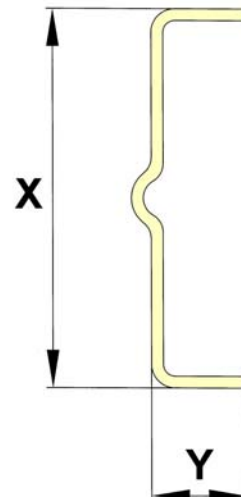
Style J



Style K

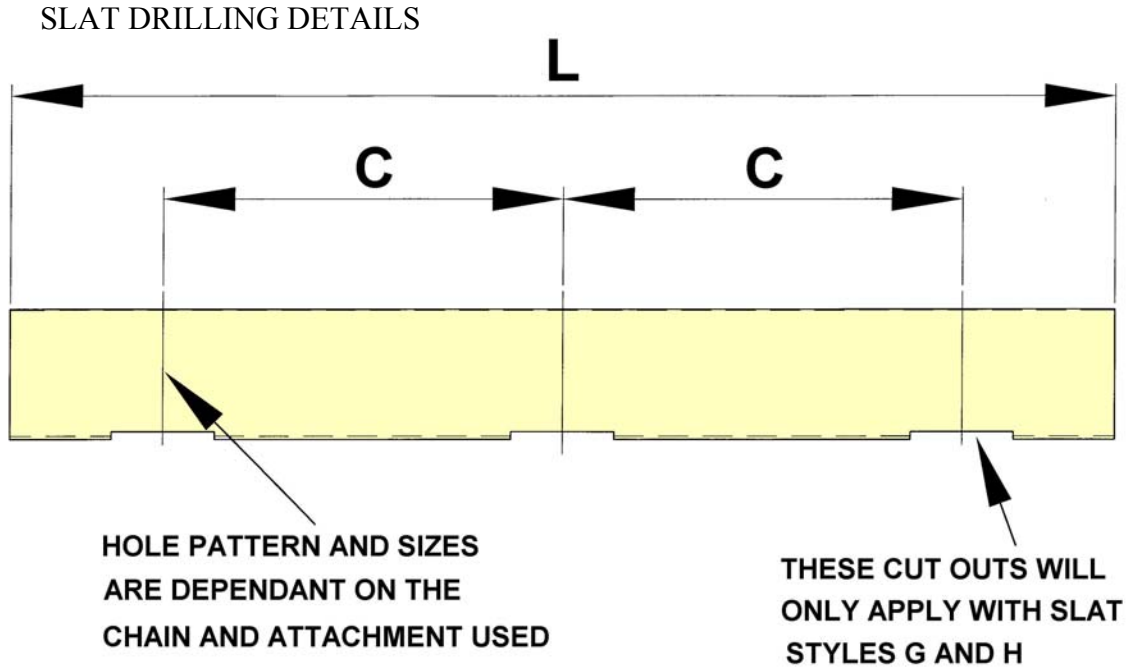


Style L



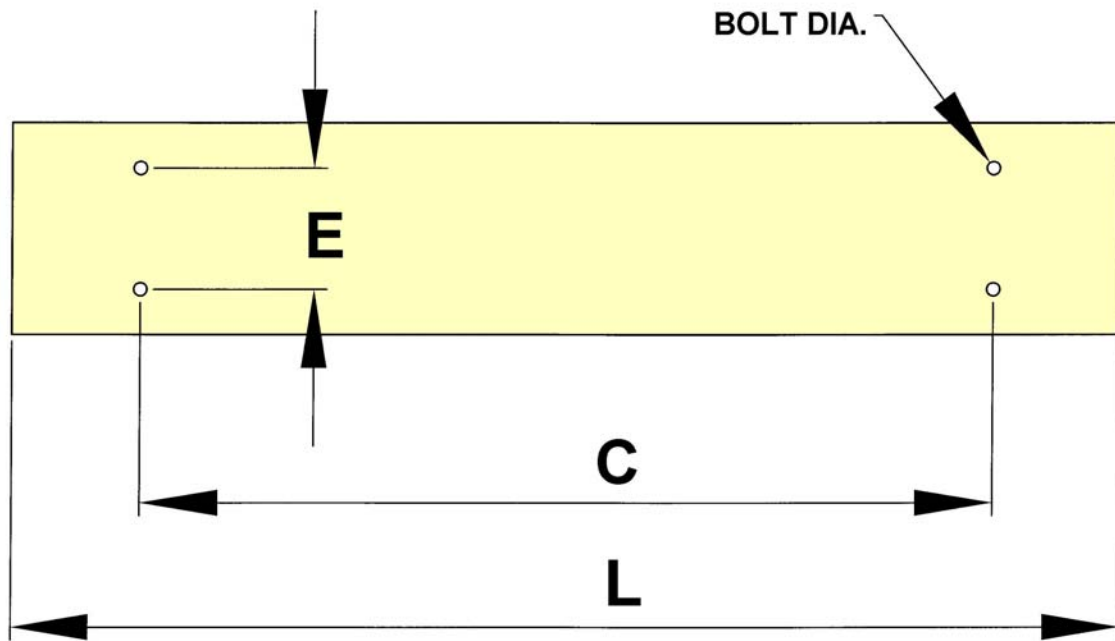
Sugar Industry

Slats



CHAIN NO.	<input type="text"/>	QUANTITY REQUIRED	<input type="text"/>
ATTACHMENT TYPE	<input type="text"/>	<u>MATERIAL :</u>	MILD STEEL OILED <input type="text"/>
SLAT/SCRAPER STYLE REQUIRED	<input type="text"/>		MILD STEEL GALVANISED <input type="text"/>
NO. CHAIN STRANDS	<input type="text"/>		STAINLESS STEEL <input type="text"/>
CHAIN CENTRES (C)	<input type="text"/>	SCRAPER (X)	(X) <input type="text"/>
OVERALL LENGTH (L)	<input type="text"/>		(Y) <input type="text"/>
SLAT/SCRAPER THICKNESS	<input type="text"/>		(E) <input type="text"/>
BOLT DIAMETER	<input type="text"/>		

Scrapers



CHAIN NO.	<input type="text"/>	QUANTITY REQUIRED	<input type="text"/>
ATTACHMENT TYPE	<input type="text"/>	<u>MATERIAL :</u>	MILD STEEL OILED <input type="text"/>
SLAT/SCRAPER STYLE REQUIRED	<input type="text"/>		MILD STEEL GALVANISED <input type="text"/>
NO. CHAIN STRANDS	<input type="text"/>		STAINLESS STEEL <input type="text"/>
CHAIN CENTRES (C)	<input type="text"/>	SCRAPER (X)	(X) <input type="text"/>
OVERALL LENGTH (L)	<input type="text"/>		(Y) <input type="text"/>
SLAT/SCRAPER THICKNESS	<input type="text"/>		(E) <input type="text"/>
BOLT DIAMETER	<input type="text"/>		