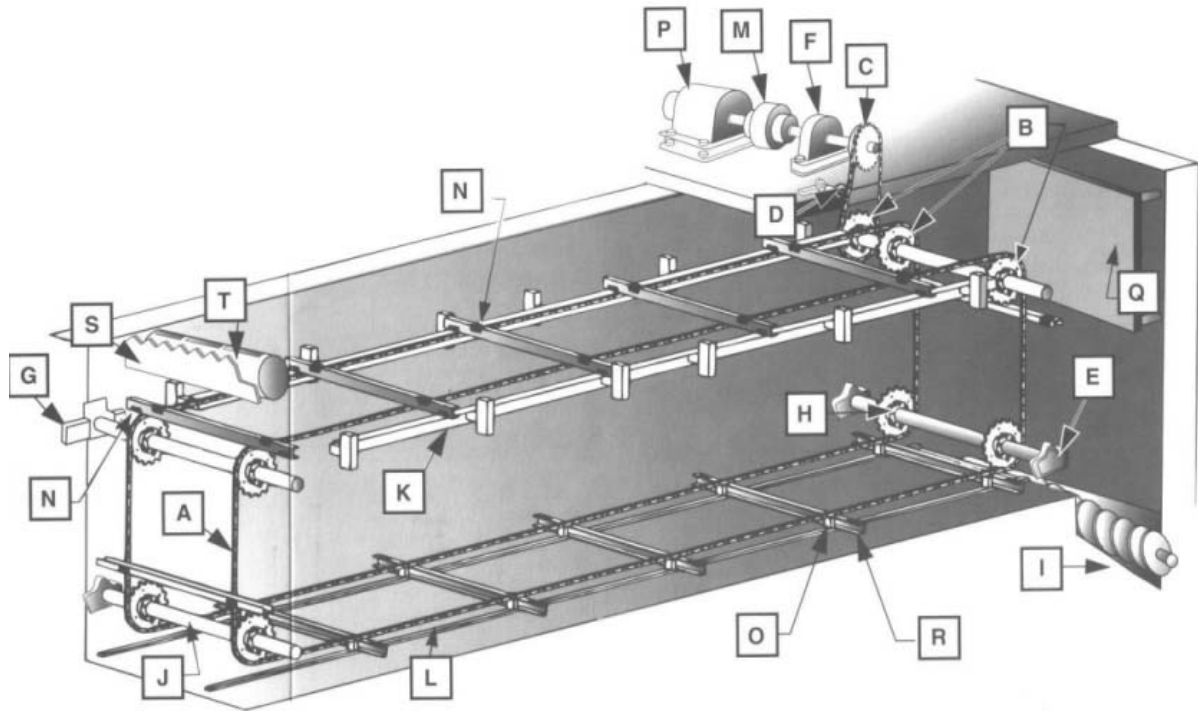


Section - 31

Industry- Waste Water treatment



| Typical chain application | | Type of chains used |
|---------------------------------|--|---|
| 1 – Sedimentation tank conveyor | | 720S cast malleable, cast steel or plastic. Alternatively, steel 6” – 12” pitch flanged roller chain. |
| 2 – Conveyor Drives | | Plastic chain will often use NH78 plastic drive chain |

Section - 32

Industry- Theme / Leisure Parks



| Typical chain application | | Type of chains used |
|--|--|--|
| | | |
| 1 - First lift elevator for roller coaster | | 3", 4" Welded steel / heavy duty drive chains. |
| | | |
| 2 – Water rides | | 3" – 6" pitch st.stl slat conveyor chains, |

Section - 33

Industry- Palm Oil Industry



| Typical chain application | | Type of chains used |
|-------------------------------|--|--------------------------------|
| 1 – Fresh fruit bunch, drive | | 4" – 6" pitch conveyor chain |
| 2 – Empty bunch conveyor | | Steel roller & mall iron chain |
| 3 – Fruit bucket elevator | | Steel roller & mall iron chain |
| 4 – Fruit distribution conv'r | | 4" – 6" pitch conveyor chain |
| 5 – Cake breader conveyor | | 4" – 6" pitch conveyor chain |
| 6 – Husk bucket elevator | | Steel roller & mall iron chain |
| 7 – Nut bucket elevator | | Steel roller & mall iron chain |
| 8 – Cracked nut conveyor | | 4" – 6" pitch conveyor chain |
| 9 – Shell elevator & conv'r | | 4" – 6" pitch conveyor chain |
| 10 – Pressed Kernal elevator | | Steel roller & mall iron chain |
| 11 – Processed oil / bottling | | Steel roller & mall iron chain |
| 12 – Polishing drum drives | | Heavy duty drive chains |

Section - 34

Industry- Cane Sugar Industry



| Typical chain application | | Type of chains used |
|---|--|--|
| 1- Cane bundle slings | | Forged round link chain |
| 2- Wash / Feed table | | Combination, steel bushed / roller, forged rivetless chains. |
| 3- Trash / spilled cane elev. | | As per No. 2 above |
| 4- Auxilliary / Main cane carrier | | 6"-12" pitch roller chains, 12" pitch outboard roller chain, 6"-9" forged link chain |
| 5- Shredded cane elevator | | Steel / st.stl bushed or roller chains, cast block link chain |
| 6- Intermediate carriers | | Steel / st.stl bushed or roller chains, cast block link chain |
| 7- Mill/Pressure feeder drive | | 4",5"&6" pitch heavy duty rotary drive chains |
| 8- Cush Cush conveyors | | Pintle / st.stl bushed chains |
| 9- Bagasse elevators / conveyors Bagasse bin / reclaim | | 4",6",8"&9" pitch roller chain |
| 10- Bagasse to boiler, metering conveyors | | Cast malleable iron, combin - ation & steel bushed chains |
| 11- Wet ash conveyors | | Steel bushed / roller chains |
| 12- Wet & Dry sugar elev. | | Steel bushed / roller chains |
| 13-Boiler stoker grate conv'r | | 4" pitch steel bushed chain |
| 12- Dryer/Conveyor drives | | Heavy duty drive chain |
| 13-Cane Diffuser | | 250mm/500mm pitch chain |

Section - 35

Industry- Beet Sugar Industry



| Typical chain application | | Type of chains used |
|----------------------------------|--|----------------------------|
| 1- Sugar beet conveyor | | Steel roller chain |
| 2- Sugar beet washing conveyor | | Steel bushed chain |
| 3- Washed trash removal conveyor | | Steel bushed chain |
| 4- Rock removal conveyor | | Steel bushed chain |
| 5- Beet cossette conveyor | | Steel bushed chain |
| 6- Scalding tub conveyor | | Steel roller chain |
| 7- Beet diffuser main chain | | Steel roller chain |
| 8- Spent beet pulp conveyor | | Steel bushed chain |

