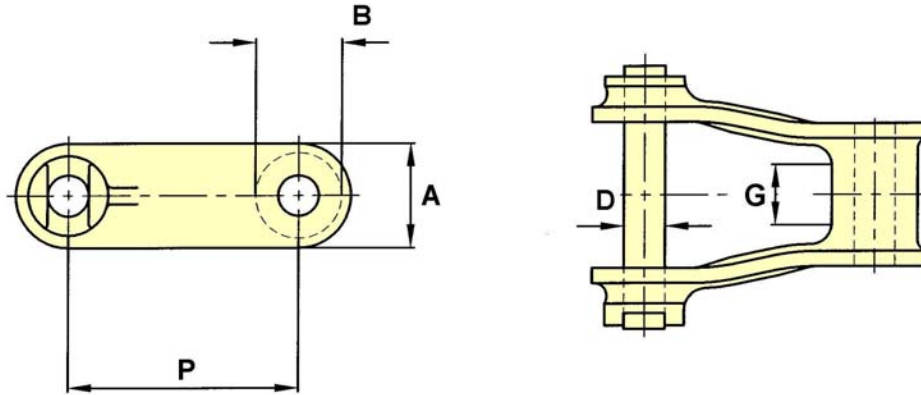


Gray Pin Chains

Plain Chain

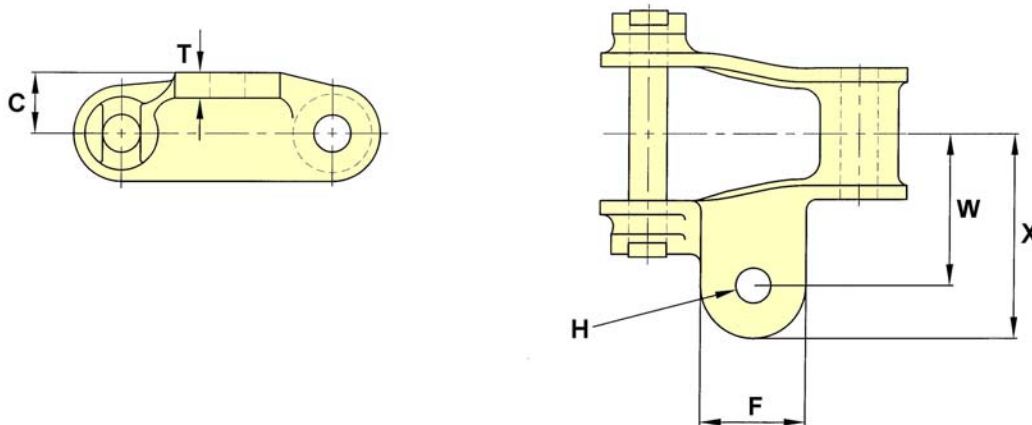
Drawing no. 125



CHAIN NO.	PITCH P	ALLOW. LOAD	U.T.S.	PIN DIA. D	SIDEBAR DEPTH A	MAX GEARING G	BARREL DIA. B
567	2.320	1,470	12,500	0.38	1.06	0.75	0.97
578	2.630	1,780	15,000	0.44	1.19	0.88	0.97
503	3.020	2,810	20,000	0.56	1.38	1.13	1.09
504	4.060	4,500	27,500	0.63	1.69	1.75	1.31
500	6.040	4,160	25,000	0.63	1.50	1.50	1.13

A1 Attachments

Drawing no. 205



CHAIN NO.	C	F	BOLT DIA. H	T	W	X
567	0.75	1.25	0.38	0.31	1.91	2.56

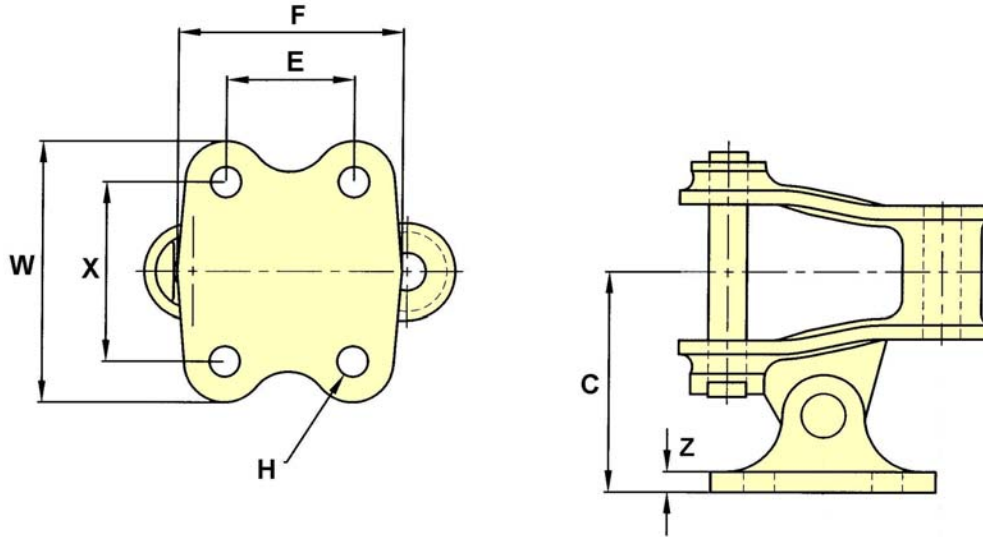
* AVAILABLE AS LEFT AND RIGHT HAND ATTACHMENTS

The tabular dimensions and weights are approximate and are not binding.
Design improvements may result in variation from the published figures and verification is recommended

Gray Pin Chains

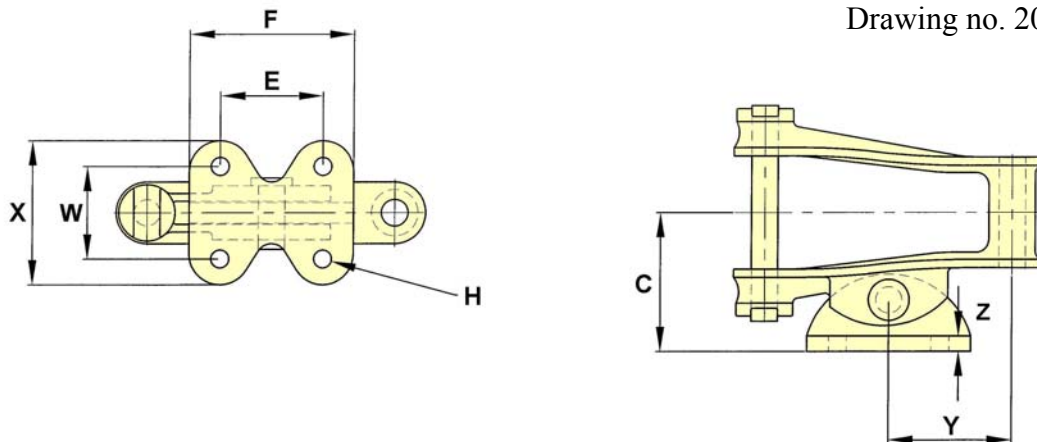
AS20 Attachments

Drawing no. 26



CHAIN NO.	C	E	F	BOLT DIA. H	W	X	Z
503	2.88	1.69	3.13	0.31	3.5	2.44	0.28
504	3.81	2.50	4.13	0.38	3.69	2.25	0.44
578	2.69	1.56	2.75	0.31	3.19	2.19	0.25

Drawing no. 207



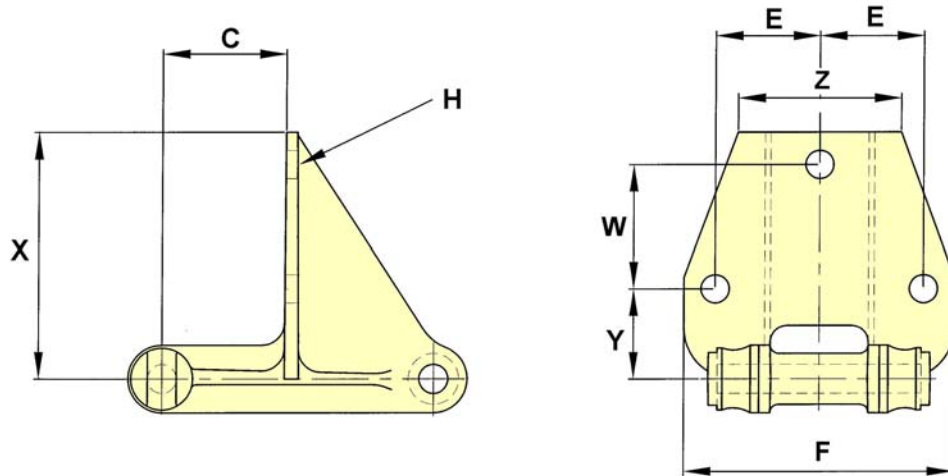
CHAIN NO.	C	E	F	BOLT DIA. H	W	X	Y	Z
500	3.38	2.50	4.00	0.38	2.25	3.50	3.00	0.38

The tabular dimensions and weights are approximate and are not binding.
Design improvements may result in variation from the published figures and verification is recommended

Gray Pin Chains

C 5.1/2 Attachments

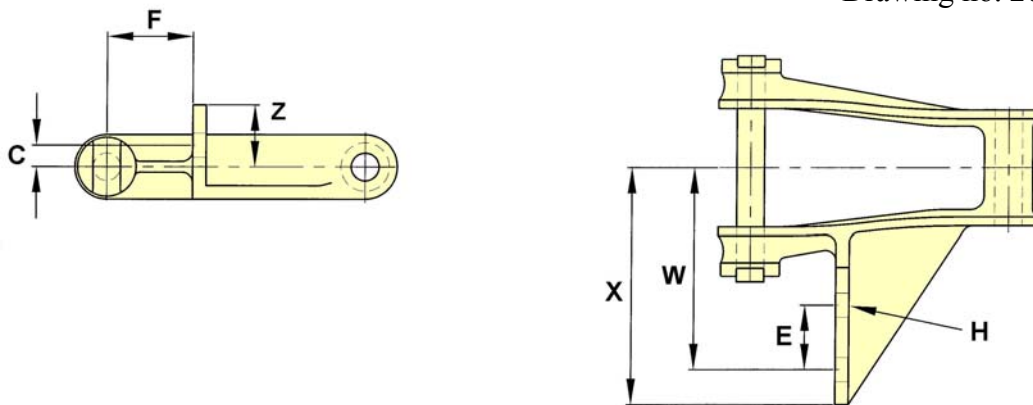
Drawing no. 203



CHAIN NO.	C	E	F	BOLT DIA. H	W	X	Y	Z
500	2.75	2.31	6.00	0.56	2.75	5.50	2.25	3.63

G5 Attachments

Drawing no. 204



CHAIN NO.	C	E	F	BOLT DIA. H	W	X	Z
500	0.50	1.50	2.00	0.50	4.69	5.50	1.44

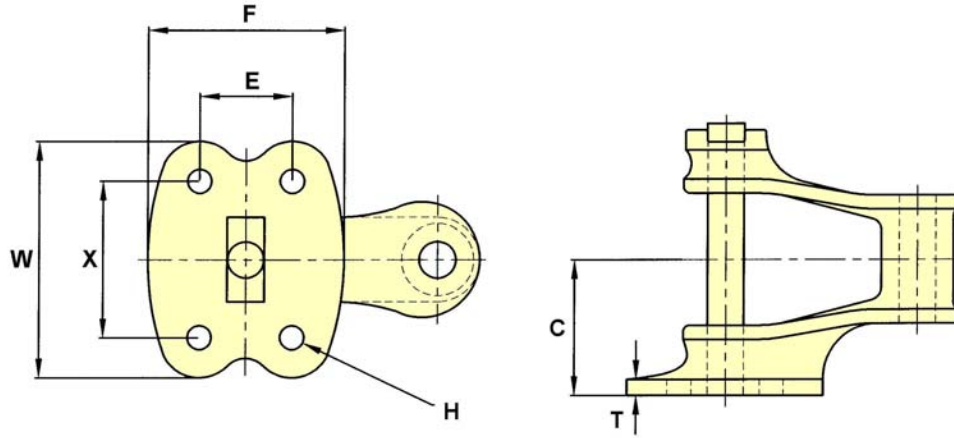
* AVAILABLE AS LEFT AND RIGHT HAND ATTACHMENTS

The tabular dimensions and weights are approximate and are not binding.
Design improvements may result in variation from the published figures and verification is recommended

Gray Pin Chains

G20 & G22 Attachments

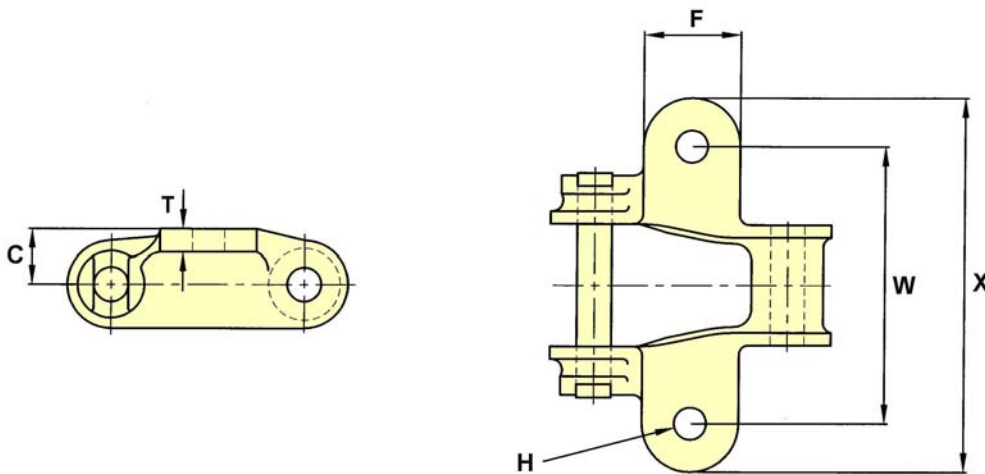
Drawing no. 135



CHAIN NO.	C	E	F	BOLT DIA. H	T	W	X
503G20	2.13	1.69	3.06	0.31	0.25	3.44	2.44
504G20	2.75	1.88	3.50	0.38	0.31	3.63	2.50
578G22	2.19	1.56	3	0.31	0.22	3.5	2.19

K1 Attachments

Drawing no. 124



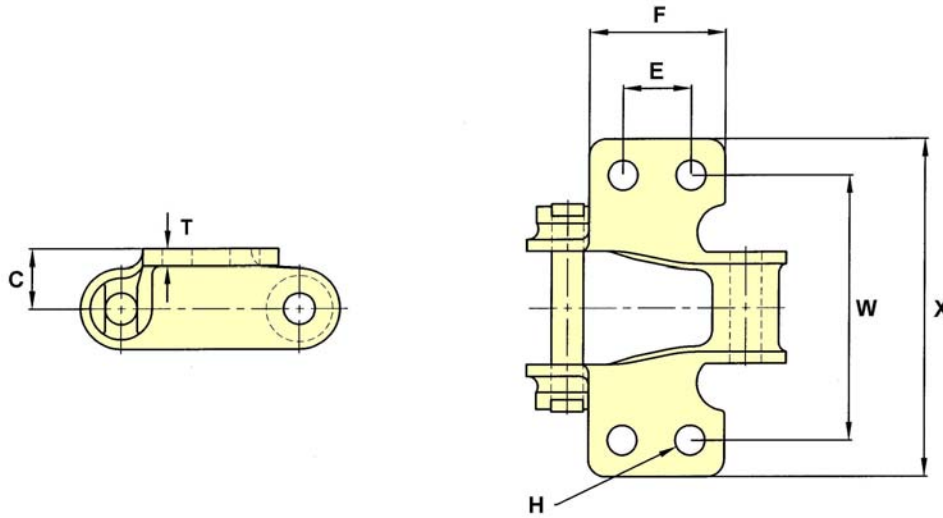
CHAIN NO.	C	F	BOLT DIA. H	T	W	X
567	0.75	1.31	0.38	0.31	3.81	5.13
503	0.88	1.63	0.38	0.31	4.38	5.63
578	0.75	1.31	0.38	0.31	3.81	5.13

The tabular dimensions and weights are approximate and are not binding.
Design improvements may result in variation from the published figures and verification is recommended

Gray Pin Chains

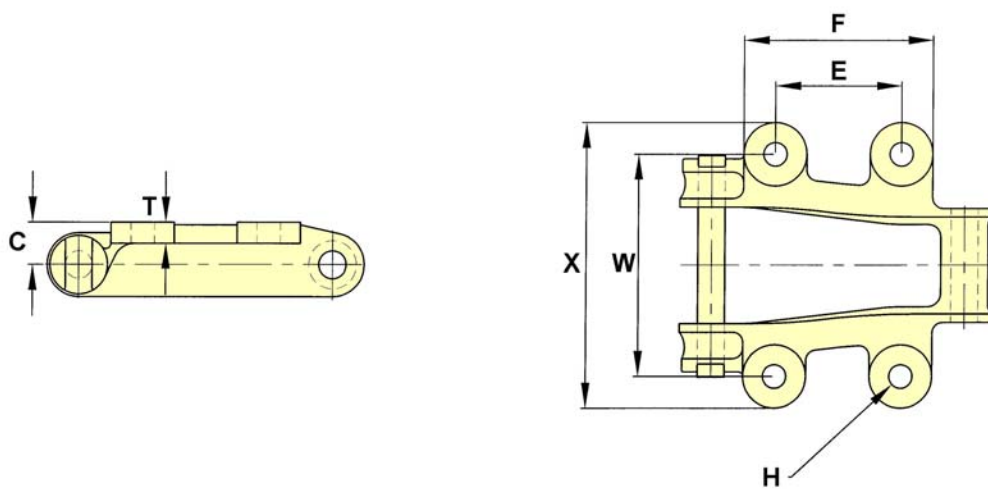
K2 Attachments

Drawing no. 123



CHAIN NO.	C	E	F	BOLT DIA. H	T	W	X
578	0.88	1.00	2.06	0.38	0.25	3.88	5.00
503	0.88	1.81	2.94	0.38	0.28	5.38	6.88
504	1.00	1.50	2.63	0.50	0.50	5.81	7.00

Drawing no. 206



CHAIN NO.	C	E	F	BOLT DIA. H	T	W	X
500	1.13	3.00	4.50	0.50	0.50	5.25	6.75

The tabular dimensions and weights are approximate and are not binding.
Design improvements may result in variation from the published figures and verification is recommended