

## Gas Bottling Industry



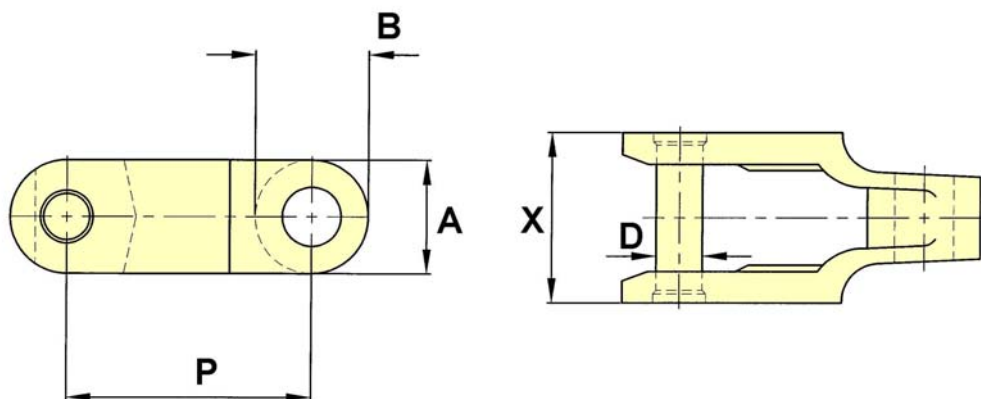
<b>Typical chain application</b>		<b>Type of chains used</b>
1- Bottle filling conveyors		Malleable iron CC600 CC625, SC200 & F801

# Malleable

## Gas Bottling Industry

CC600 / CC625 Chain

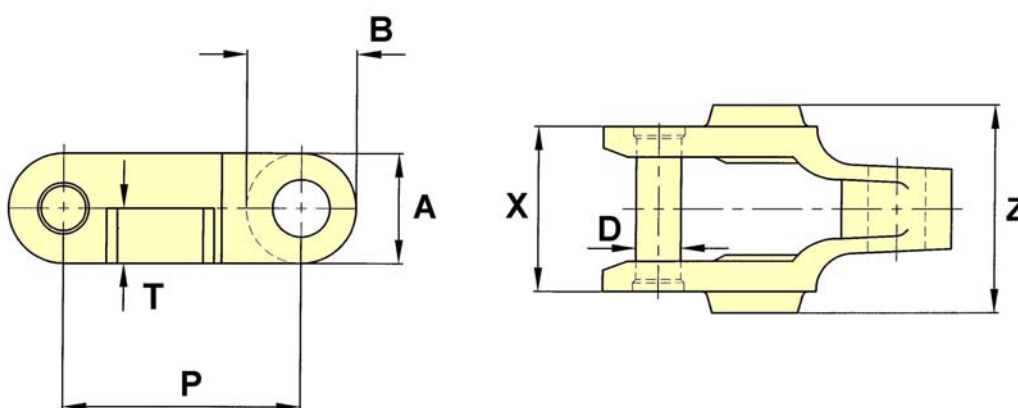
Drawing no. 228



CHAIN NO.	PITCH P	ALLOW. LOAD	U.T.S.	PIN DIA. D	SIDEBAR DEPTH A	B	X	MIN. TURN RAD.
CC600	2.500	1,500	12,500	0.44	1.13	1.13	1.69	21
CC625	2.520	1,500	12,500	0.44	1.13	1.13	1.69	21

CC600 D Chain

Drawing no. 229



CHAIN NO.	PITCH P	ALLOW. LOAD	U.T.S.	PIN DIA. D	SIDEBAR DEPTH A	B	T	X	Z	MIN. TURN RAD.
CC600D	2.500	1,500	12,500	0.44	1.13	1.13	0.56	1.69	2.13	21

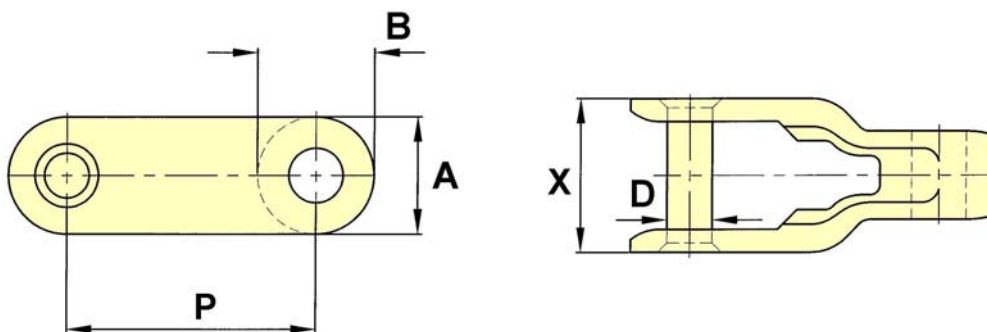
The tabular dimensions and weights are approximate and are not binding.  
Design improvements may result in variation from the published figures and verification is recommended.

# Malleable

## Gas Bottling Industry

### CC1300 Chain

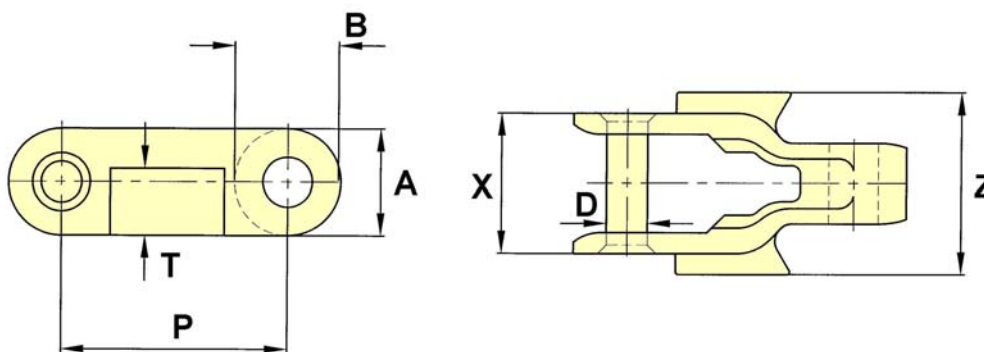
Drawing no. 230



CHAIN NO.	PITCH P	ALLOW. LOAD	U.T.S.	PIN DIA. D	SIDEBAR DEPTH A	B	X	MIN. TURN RAD.
CC1300	3.25	2,250	24,200	0.56	1.50	1.50	2.00	39

### CC1300 D Chain

Drawing no. 231



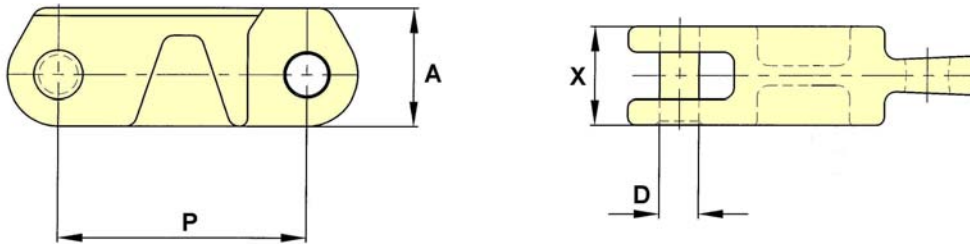
CHAIN NO.	PITCH P	ALLOW. LOAD	U.T.S.	PIN DIA. D	SIDEBAR DEPTH A	B	X	Z	MIN. TURN RAD.
CC1300D	3.25	2,250	24,200	0.56	1.5	1.5	2	2.56	39

Malleable

Gas Bottling Industry

CC400 Chain

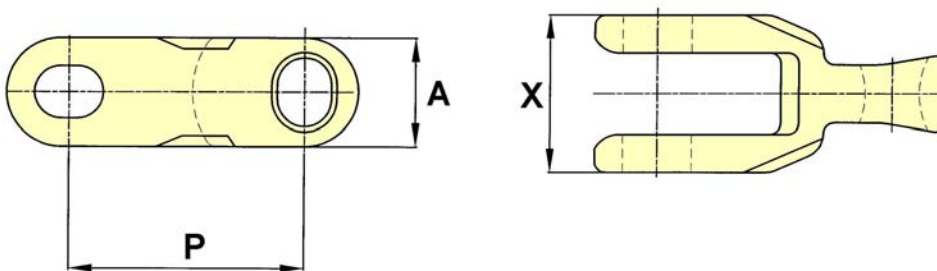
Drawing no. 233



CHAIN NO.	PITCH P	ALLOW. LOAD	U.T.S.	PIN DIA. D	SIDEBAR DEPTH A	X	MIN. TURN RAD.
CC400	4.000	2,250	30,000	0.59	1.81	1.53	98

F801 Chain

Drawing no. 232

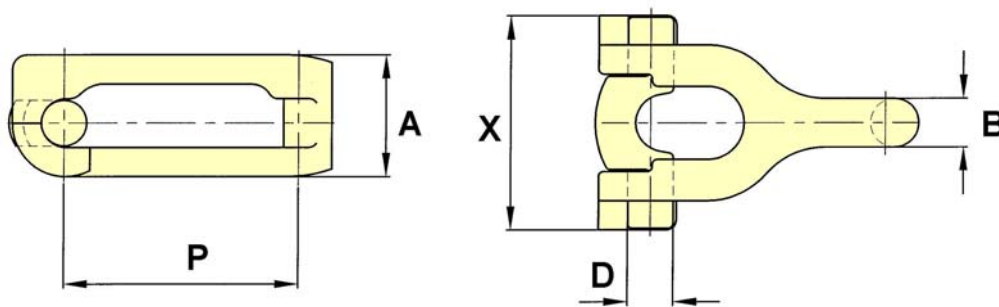


CHAIN NO.	PITCH P	ALLOW. LOAD	U.T.S.	SIDEBAR DEPTH A	X	MIN. TURN RAD.
F801	2.730	1,500	13,200	1.18	1.71	

The tabular dimensions and weights are approximate and are not binding.  
Design improvements may result in variation from the published figures and verification is recommended.

MalleableGas Bottling IndustryRD10A Chain

Drawing no. 234



CHAIN NO.	PITCH P	ALLOW. LOAD	U.T.S.	PIN DIA. D	SIDEBAR DEPTH A	B	X	MIN. TURN RAD.
RD10A	3.000		11,000	0.56	1.61	0.63	2.75	18