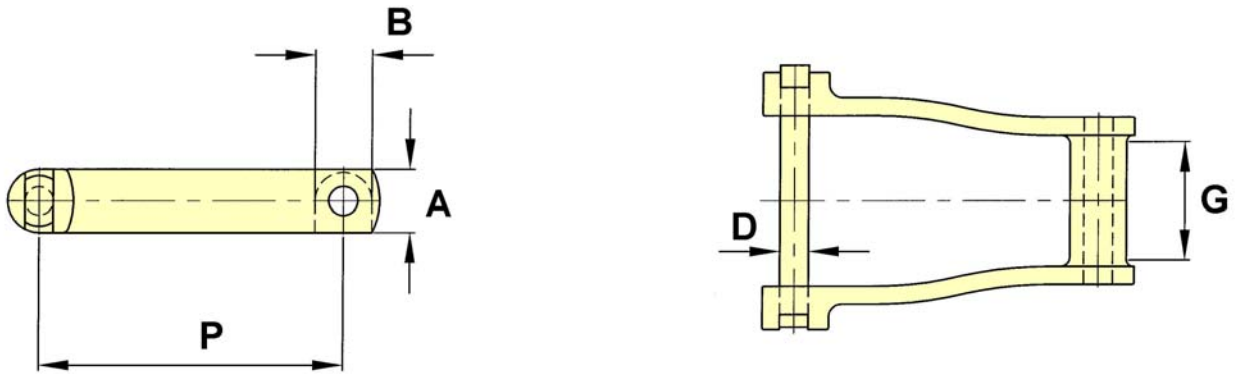


## Drag Link Chains

### Plain Chain

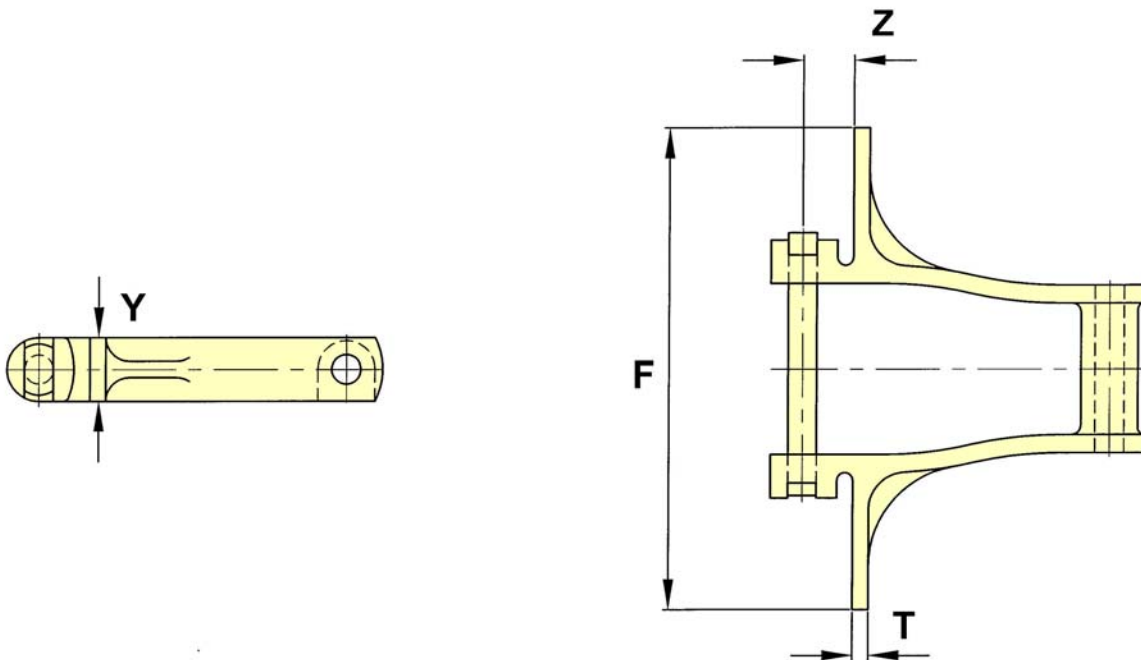
Drawing no. 264



CHAIN NO.	PITCH P	ALLOW. LOAD	U.T.S.	PIN DIA. D	SIDEBAR DEPTH A	MAX GEARING G	BARREL DIA. B
430X	6.000	4,150	25,000	0.56	1.25	2.56	1.25

### Wing Attachments

Drawing no. 265



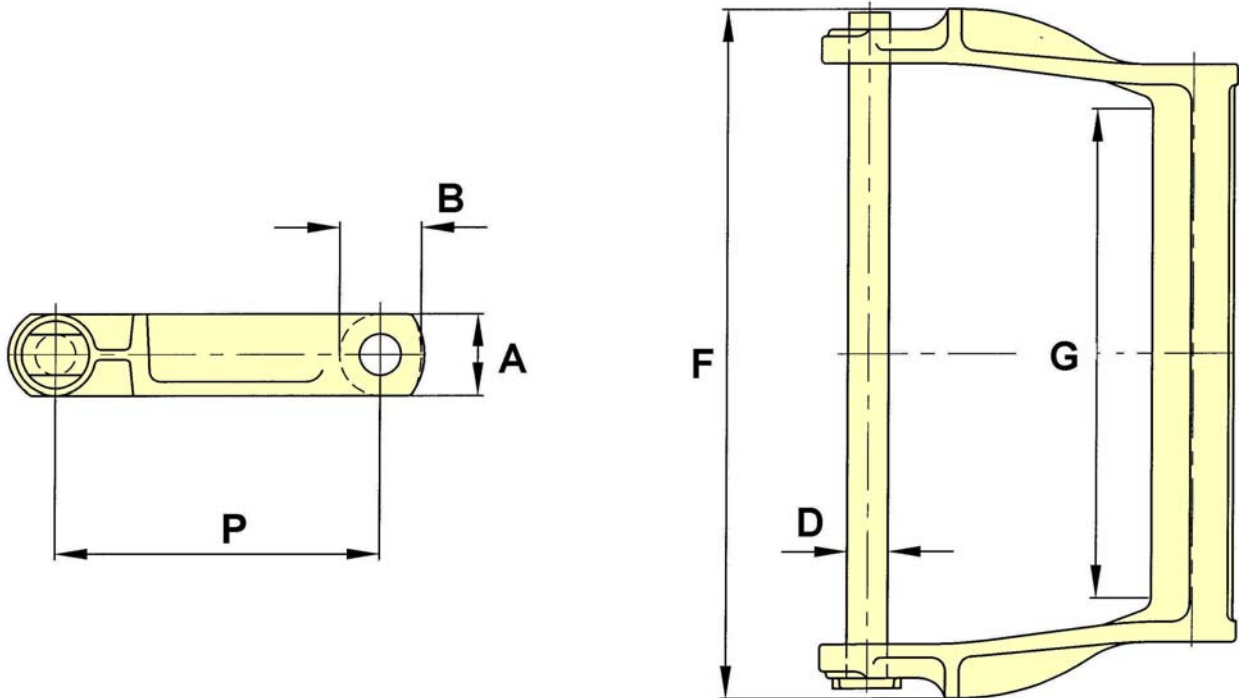
CHAIN NO.	F	T	Y	Z
430X	9.50	0.28	1.25	1.00
430X	11.50	0.28	1.25	1.00

The tabular dimensions and weights are approximate and are not binding.  
Design improvements may result in variation from the published figures and verification is recommended.

## Drag Link Chains

### Wing Attachments

Drawing no. 238



CHAIN NO.	PITCH P	ALLOW. LOAD	U.T.S.	PIN DIA. D	SIDEBAR DEPTH A	MAX GEARING G	BARREL DIA. B	F
H110	6.000	4,200	28,000	0.63	1.50	9.00	1.50	12.50

The tabular dimensions and weights are approximate and are not binding.  
Design improvements may result in variation from the published figures and verification is recommended.