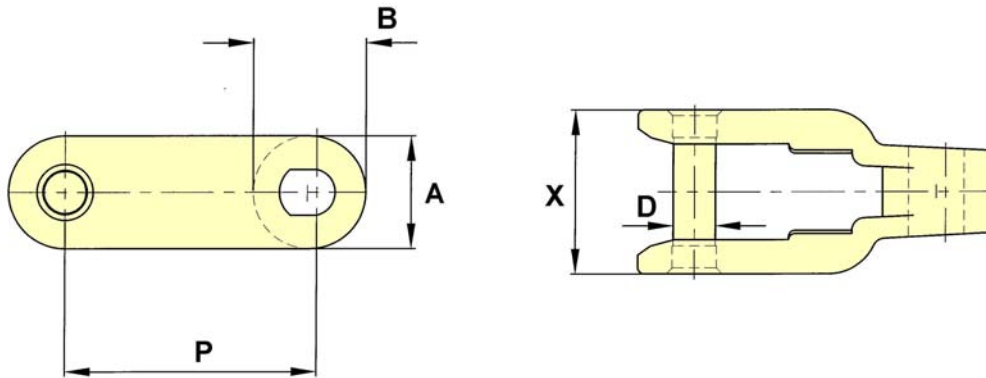


Plastic

Dairy Chains

CC600 Chain Plain Chain

Drawing no. 243

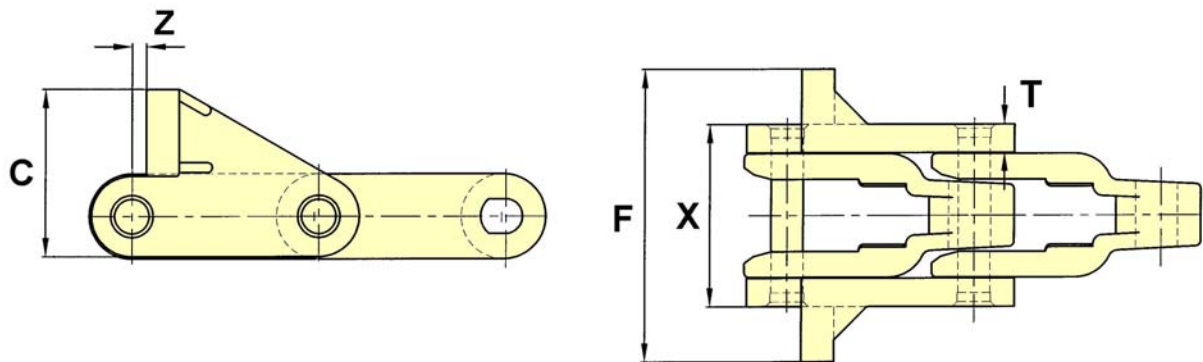


CHAIN NO.	PITCH P	ALLOW. LOAD	U.T.S.	PIN DIA. D	SIDEBAR DEPTH A	B	X	MIN. TURN RAD.
CC600	2.500	1,850	3,400	0.44	1.13	1.13	1.63	30

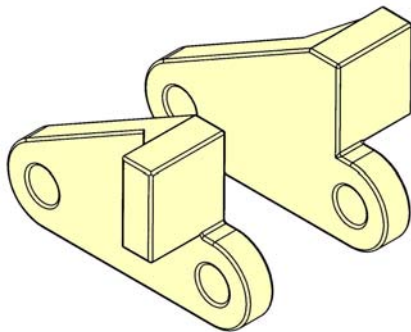
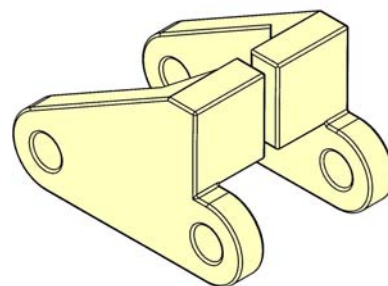
NOTE: BOTH SNAP FIT AND CIRCLIP PIN STYLES ARE AVAILABLE

PlasticDairy ChainsCC600 Chain with S Pusher Attachment

Drawing no. 244



C	F	T	X	Z
2.20	3.87	0.38	2.44	0.19

Attachments Facing OutwardsAttachments Facing Inwards

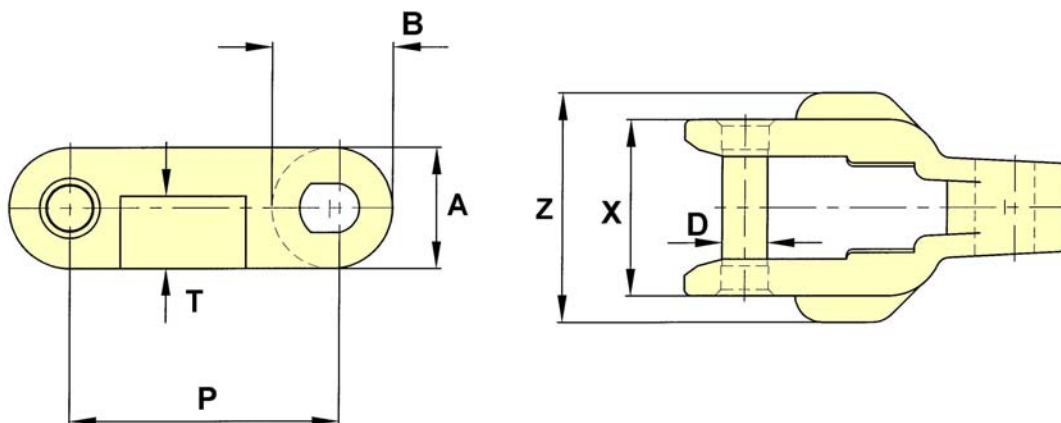
THESE PUSHER ATTACHMENTS CAN BE FITTED EITHER INWARDS OR OUTWARDS, AS SHOWN ABOVE, AND ARE FITTED TO THE OUTER FACES OF THE STANDARD CC600 CHAIN, AT ANY INTERVAL ALONG ITS LENGTH. IT CAN ONLY BE USED ON STRAIGHT RUNNING ACETAL CHAINS, UTILISING AN EXTENDED CIRCLIP PIN.

Plastic

Dairy Chains

CC600 D Chain

Drawing no. 245

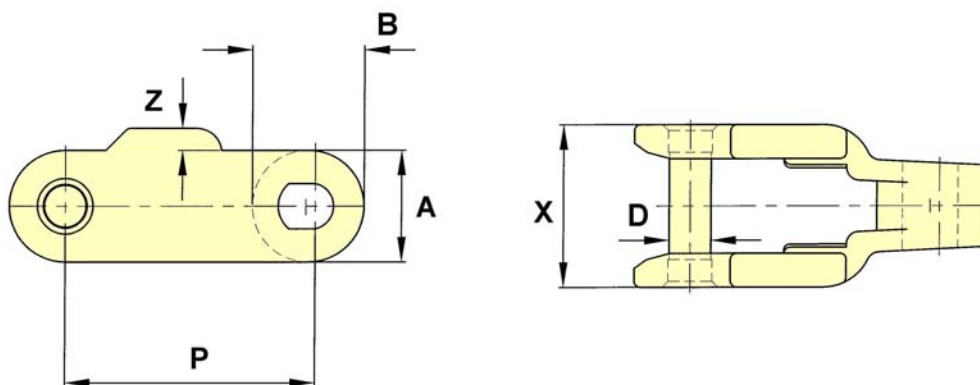


CHAIN NO.	PITCH P	ALLOW. LOAD	U.T.S.	PIN DIA. D	SIDEBAR DEPTH A	B	T	X	Z	MIN. TURN RAD.
CC600D	2,500	1,850	3,400	0.44	1.13	1.13	0.67	1.65	2.12	30

NOTE: BOTH SNAP FIT AND CIRCLIP PIN STYLES ARE AVAILABLE

CC600 F Chain

Drawing no. 246



CHAIN NO.	PITCH P	ALLOW. LOAD	U.T.S.	PIN DIA. D	SIDEBAR DEPTH A	B	X	Z	MIN. TURN RAD.
CC600F	2,500	1,850	3,400	0.44	1.13	1.13	1.62	0.22	30

NOTE: BOTH SNAP FIT AND CIRCLIP PIN STYLES ARE AVAILABLE

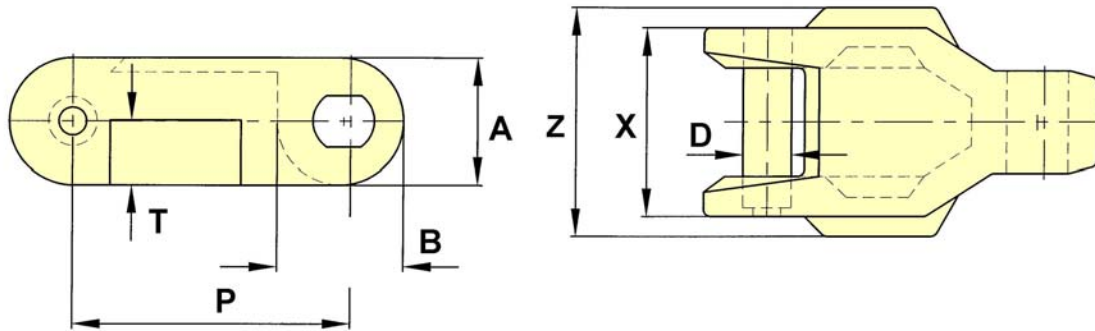
The tabular dimensions and weights are approximate and are not binding.
Design improvements may result in variation from the published figures and verification is recommended.

Plastic

Dairy Chains

CC600 DB Chain

Drawing no. 247



CHAIN NO.	PITCH P	ALLOW. LOAD	U.T.S.	PIN DIA. D	SIDEBAR DEPTH A	B	T	X	Z	MIN. TURN RAD.
CC600DB	2.500	1,850	2,900	0.44	1.14	1.14	0.58	1.69	2.05	30

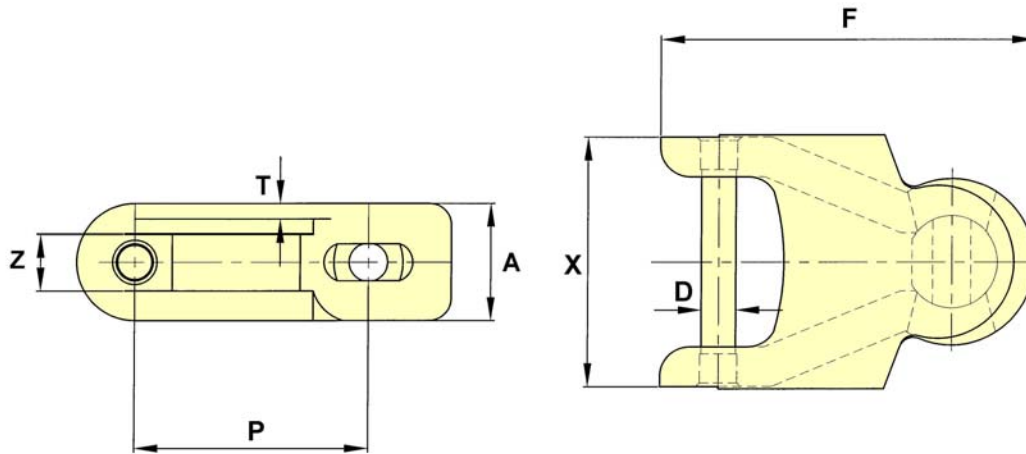
NOTE: THIS CHAIN IS SUPPLIED WITH KNURLED PINS ONLY

Plastic

Dairy Chains

1700 Chain

Drawing no. 256



CHAIN NO.	PITCH P	ALLOW. LOAD	U.T.S.	PIN DIA. D	SIDEBAR DEPTH A	F	T	X	Z	MIN. TURN RAD.
1700	1.968	790	1320	0.31	0.94	3.16	0.13	2.15	0.44	5.5

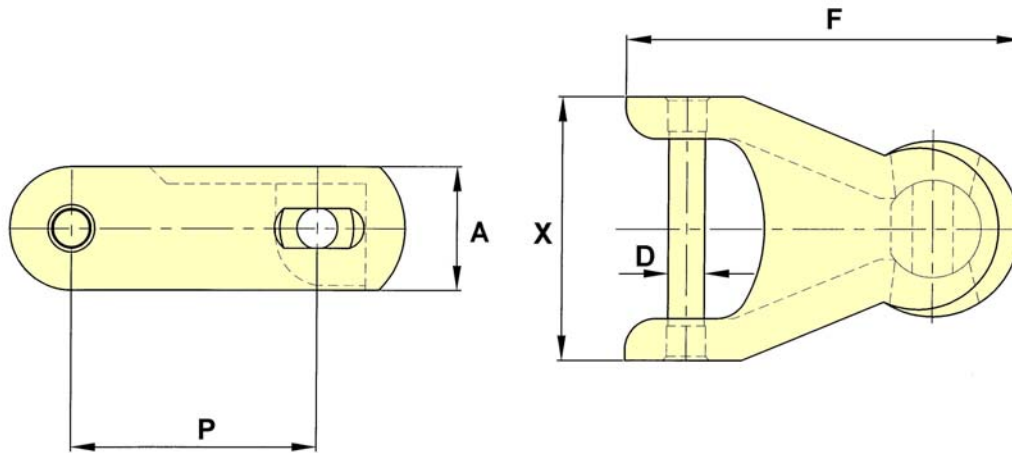
NOTE: ONLY SNAP FIT PINS ARE AVAILABLE WITH THIS CHAIN

Plastic

Dairy Chains

50mm Chain

Drawing no. 253

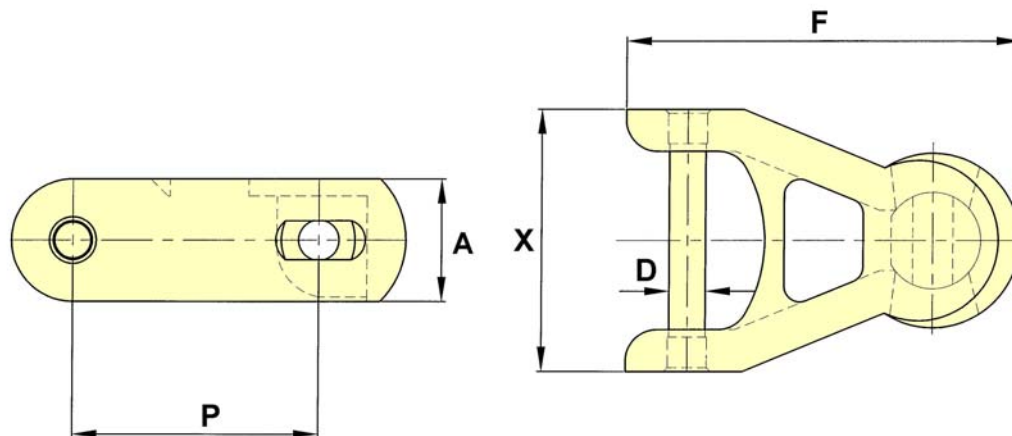


CHAIN NO.	PITCH P	ALLOW. LOAD	U.T.S.	PIN DIA. D	SIDEBAR DEPTH A	F	X	MIN. TURN RAD.
50 mm	1.968	1,320	2,200	0.31	0.98	3.16	2.10	5.50

NOTE: BOTH SNAP FIT AND KNURL PIN STYLES ARE AVAILABLE

50mm Open Top Chain

Drawing no. 254



CHAIN NO.	PITCH P	ALLOW. LOAD	U.T.S.	PIN DIA. D	SIDEBAR DEPTH A	F	X	MIN. TURN RAD.
50 mm	1.968	1,320	2,200	0.31	0.98	3.16	2.10	5.50

NOTE: BOTH SNAP FIT AND KNURL PIN STYLES ARE AVAILABLE

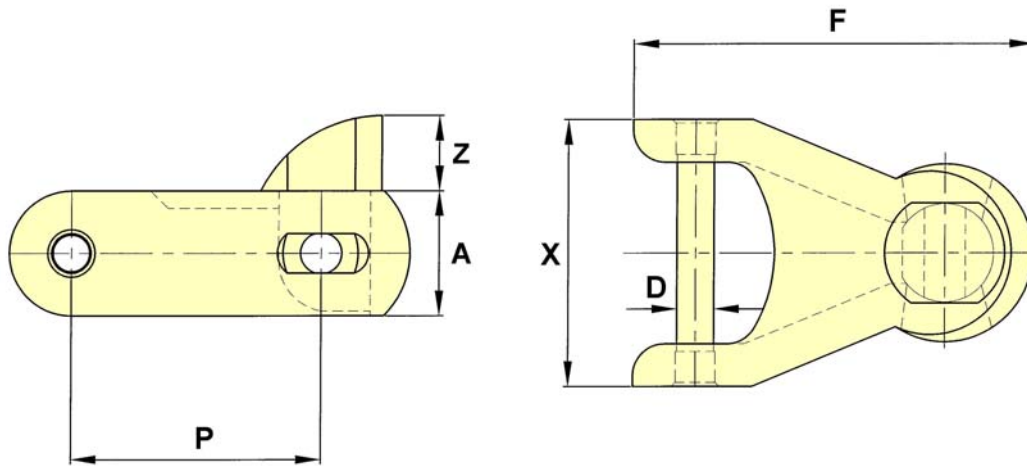
The tabular dimensions and weights are approximate and are not binding. Design improvements may result in variation from the published figures and verification is recommended.

Plastic

Dairy Chains

50mm Chain with Pusher Attachment

Drawing no. 255



CHAIN NO.	PITCH	ALLOW. LOAD	U.T.S.	PIN DIA.	SIDEBAR DEPTH				MIN. TURN RAD.
	P			D	A	F	X	Z	
50 mm	1.968	1,320	2,200	0.31	0.98	3.16	2.10	0.59	5.50

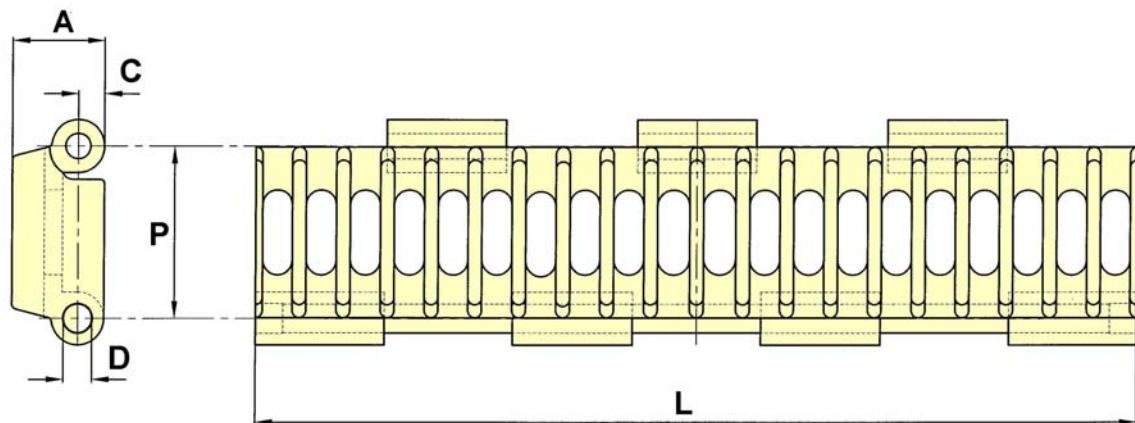
NOTE: BOTH SNAP FIT AND KNURL PIN STYLES ARE AVAILABLE

Plastic

Dairy Chains

Ventilated Modular Slat Chain

Drawing no. 240



CHAIN NO.	PITCH P	ALLOW. LOAD	U.T.S.	PIN DIA. D	SIDEBAR DEPTH A	C	L
VMS	1.170			0.16	0.62	0.18	6.00

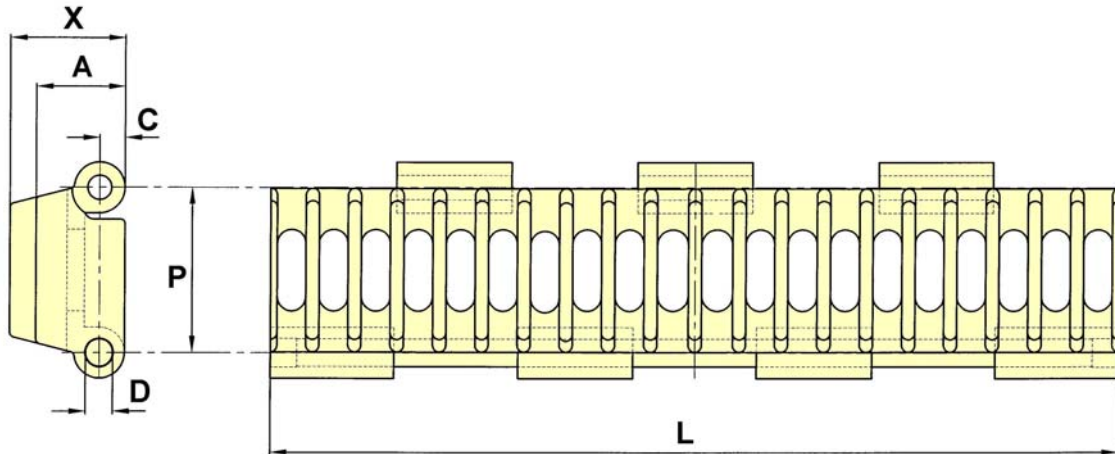
The tabular dimensions and weights are approximate and are not binding.
Design improvements may result in variation from the published figures and verification is recommended.

Plastic

Dairy Chains

Ventilated Modular Slat Chain with Pusher Attachment

Drawing no. 241



CHAIN NO.	PITCH P	ALLOW. LOAD	U.T.S.	PIN DIA. D	SIDEBAR DEPTH A	C	L	X
VMS PUSHER	1.170			0.16	0.62	0.18	6.00	0.92

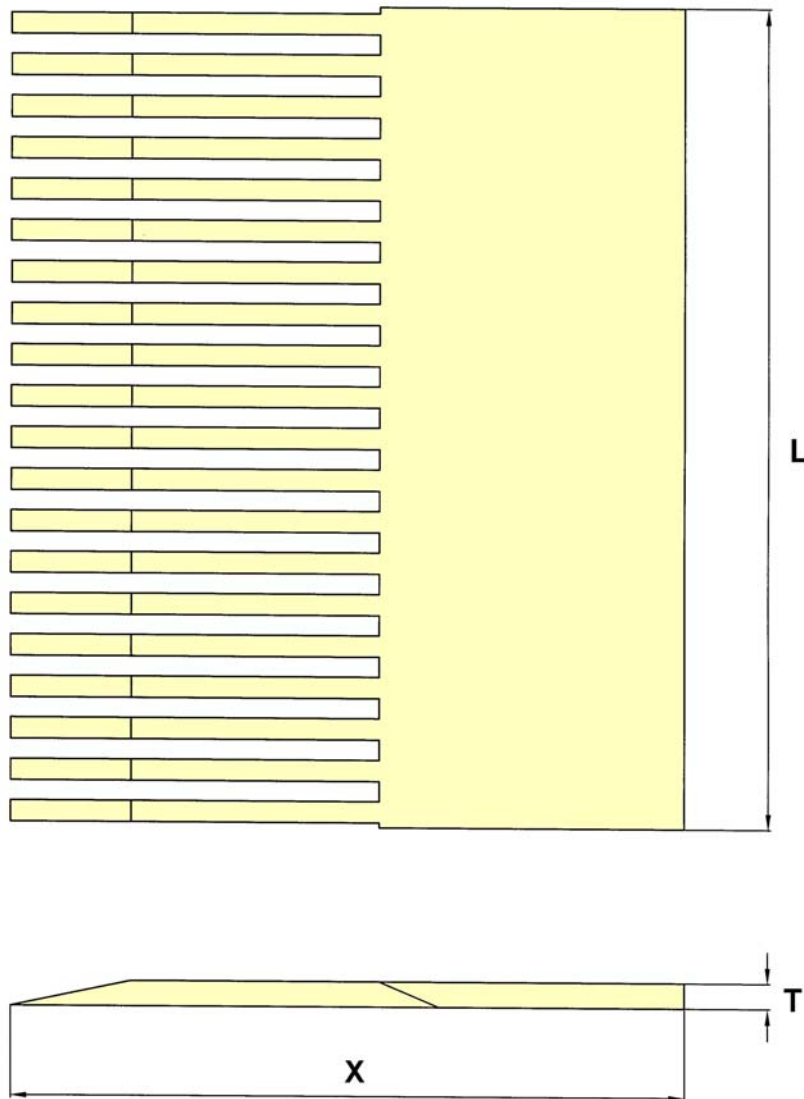
NOTE: THE STRAIGHT RUNNING VMS SLAT CHAIN CAN BE ARRANGED TO TRAVEL IN EITHER DIRECTION. THESE 6" WIDE MODULAR UNITS, INCORPORATING A 0.16" (4mm) DIA. STAINLESS STEEL PIN, CAN BE JOINED TO PRODUCE A MAXIMUM TOTAL WIDTH OF 54".

Plastic

Dairy Chains

Ventilated Modular Slat Transfer Plate

Drawing no. 242



L	T	X
6.00	0.18	4.92

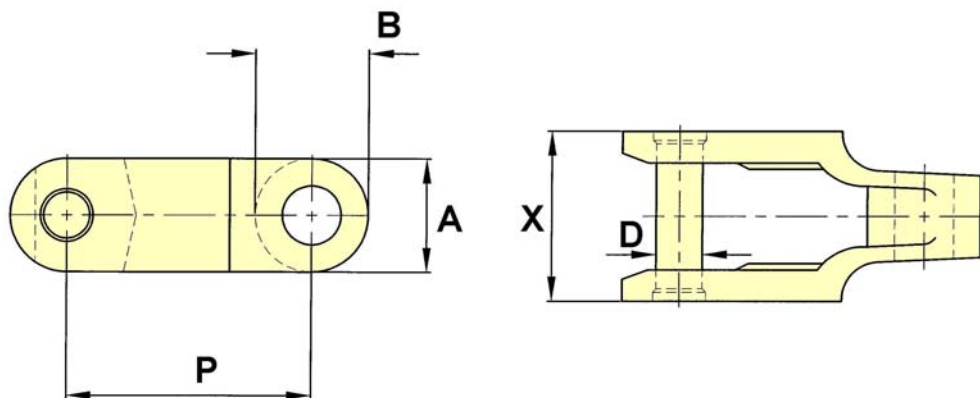
The tabular dimensions and weights are approximate and are not binding.
Design improvements may result in variation from the published figures and verification is recommended.

Malleable

Dairy Chains

CC600 / CC625 Chain

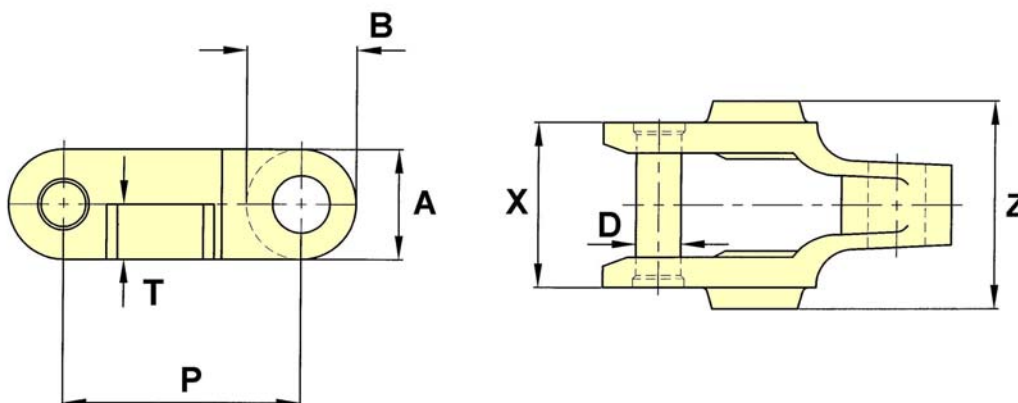
Drawing no. 228



CHAIN NO.	PITCH P	ALLOW. LOAD	U.T.S.	PIN DIA. D	SIDEBAR DEPTH A	B	X	MIN. TURN RAD.
CC600	2.500	1,500	12,500	0.44	1.13	1.13	1.69	21
CC625	2.520	1,500	12,500	0.44	1.13	1.13	1.69	21

CC600 D Chain

Drawing no. 229



CHAIN NO.	PITCH P	ALLOW. LOAD	U.T.S.	PIN DIA. D	SIDEBAR DEPTH A	B	T	X	Z	MIN. TURN RAD.
CC600D	2.500	1,500	12,500	0.44	1.13	1.13	0.56	1.69	2.13	21

The tabular dimensions and weights are approximate and are not binding.
Design improvements may result in variation from the published figures and verification is recommended.