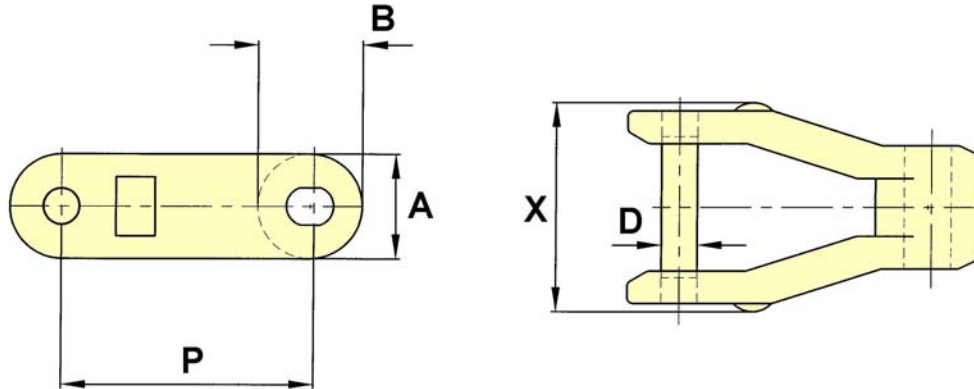


Plastic

Crate Conveyor Chain

3" Pitch Pintle Chain

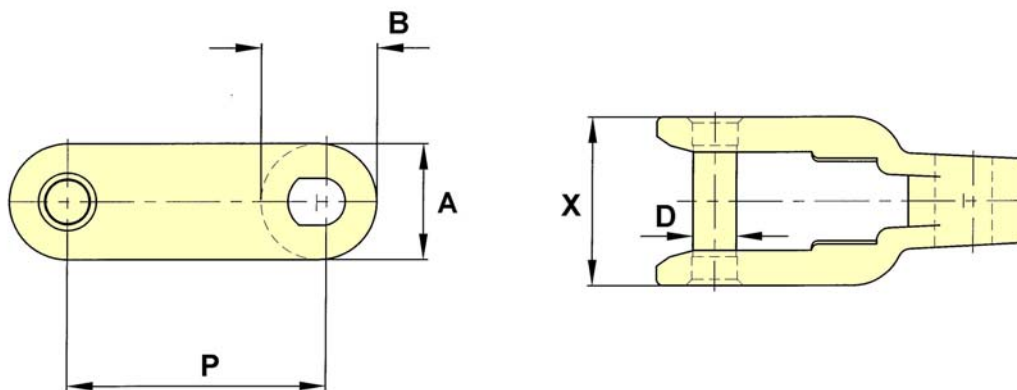
Drawing no. 239



CHAIN NO.	PITCH P	ALLOW. LOAD	U.T.S.	PIN DIA. D	SIDEBAR DEPTH A	B	X
3" PITCH	3.000		4,350	0.44	1.26	1.26	2.52

CC600 Chain Plain Chain

Drawing no. 243



CHAIN NO.	PITCH P	ALLOW. LOAD	U.T.S.	PIN DIA. D	SIDEBAR DEPTH A	B	X	MIN. TURN RAD.
CC600	2.500	1,850	3,400	0.44	1.13	1.13	1.63	30

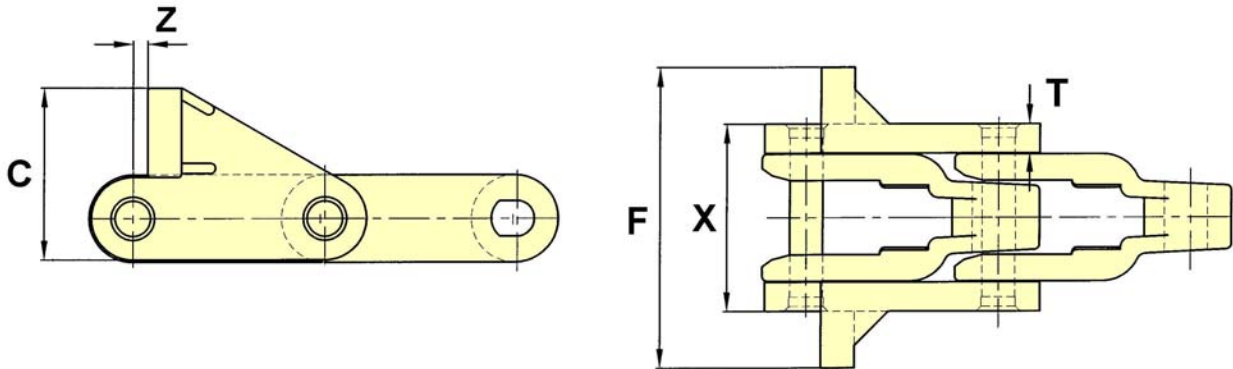
NOTE: BOTH SNAP FIT AND CIRCLIP PIN STYLES ARE AVAILABLE

Plastic

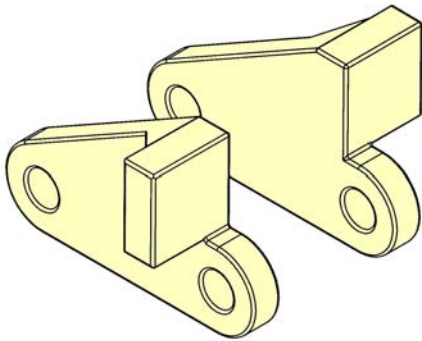
Crate Conveyor Chain

CC600 Chain with S Pusher Attachment

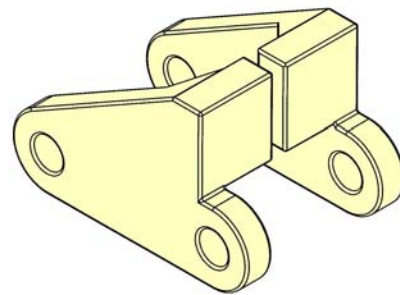
Drawing no. 244



C	F	T	X	Z
2.20	3.87	0.38	2.44	0.19



Attachments Facing Outwards



Attachments Facing Inwards

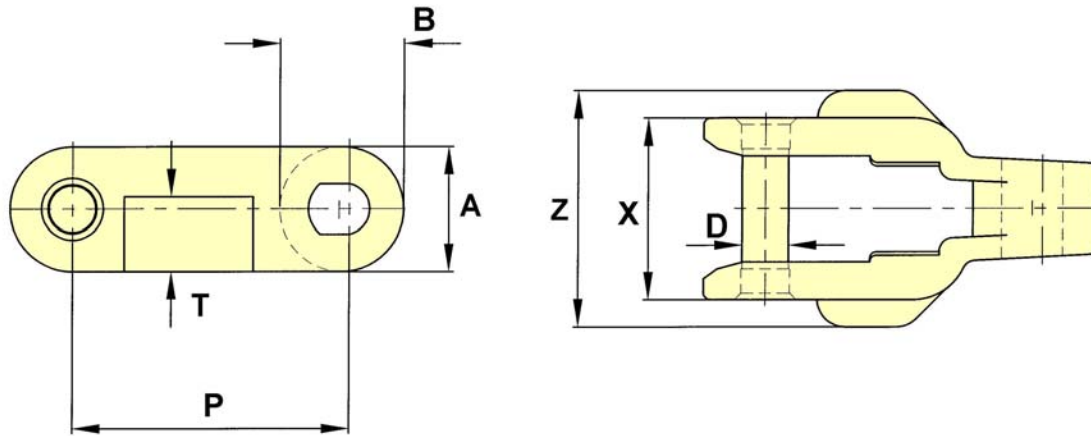
THESE PUSHER ATTACHMENTS CAN BE FITTED EITHER INWARDS OR OUTWARDS, AS SHOWN ABOVE, AND ARE FITTED TO THE OUTER FACES OF THE STANDARD CC600 CHAIN, AT ANY INTERVAL ALONG ITS LENGTH. IT CAN ONLY BE USED ON STRAIGHT RUNNING ACETAL CHAINS, UTILISING AN EXTENDED CIRCLIP PIN.

Plastic

Crate Conveyor Chain

CC600 D Chain

Drawing no. 245

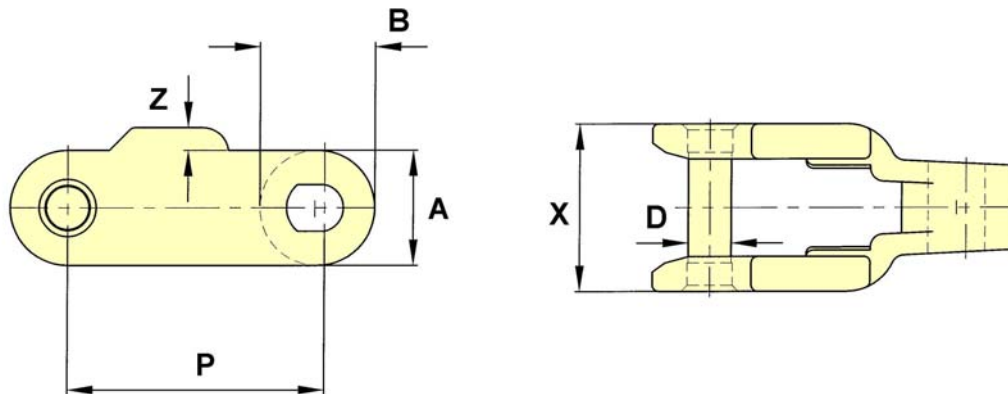


CHAIN NO.	PITCH P	ALLOW. LOAD	U.T.S.	PIN DIA. D	SIDEBAR DEPTH A	B	T	X	Z	MIN. TURN RAD.
CC600D	2.500	1,850	3,400	0.44	1.13	1.13	0.67	1.65	2.12	30

NOTE: BOTH SNAP FIT AND CIRCLIP PIN STYLES ARE AVAILABLE

CC600 F Chain

Drawing no. 246



CHAIN NO.	PITCH P	ALLOW. LOAD	U.T.S.	PIN DIA. D	SIDEBAR DEPTH A	B	X	Z	MIN. TURN RAD.
CC600F	2.500	1,850	3,400	0.44	1.13	1.13	1.62	0.22	30

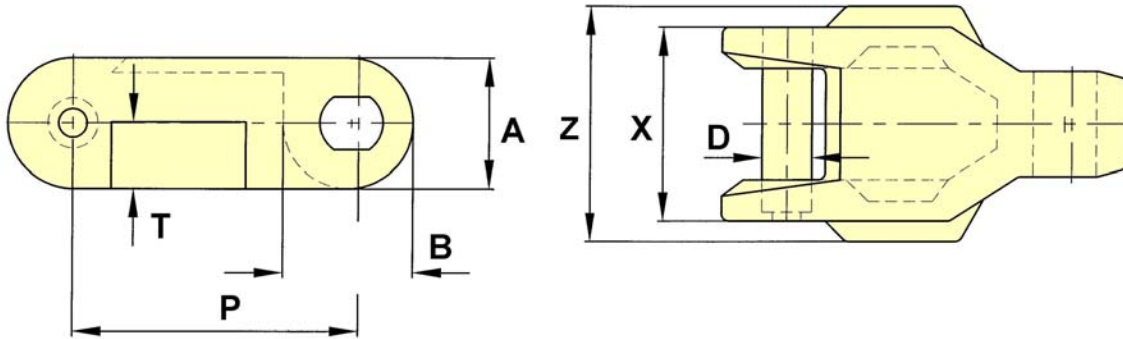
NOTE: BOTH SNAP FIT AND CIRCLIP PIN STYLES ARE AVAILABLE

Plastic

Crate Conveyor Chain

CC600 DB Chain

Drawing no. 247

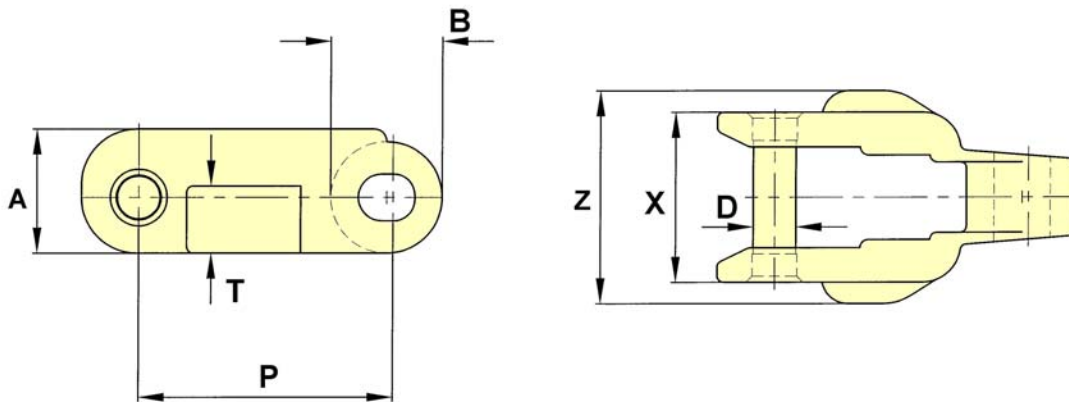


CHAIN NO.	PITCH P	ALLOW. LOAD	U.T.S.	PIN DIA. D	SIDEBAR DEPTH A	B	T	X	Z	MIN. TURN RAD.
CC600DB	2.500	1,850	2,900	0.44	1.14	1.14	0.58	1.69	2.05	30

NOTE: THIS CHAIN IS SUPPLIED WITH KNURLED PINS ONLY

CC631 D Chain

Drawing no. 248



CHAIN NO.	PITCH P	ALLOW. LOAD	U.T.S.	PIN DIA. D	SIDEBAR DEPTH A	B	T	X	Z	MIN. TURN RAD.
CC631D	2.500	1,470	2,310	0.44	1.22	1.10	0.66	1.67	2.09	21

NOTE: THIS CHAIN IS SUPPLIED WITH SNAP FIT PINS ONLY

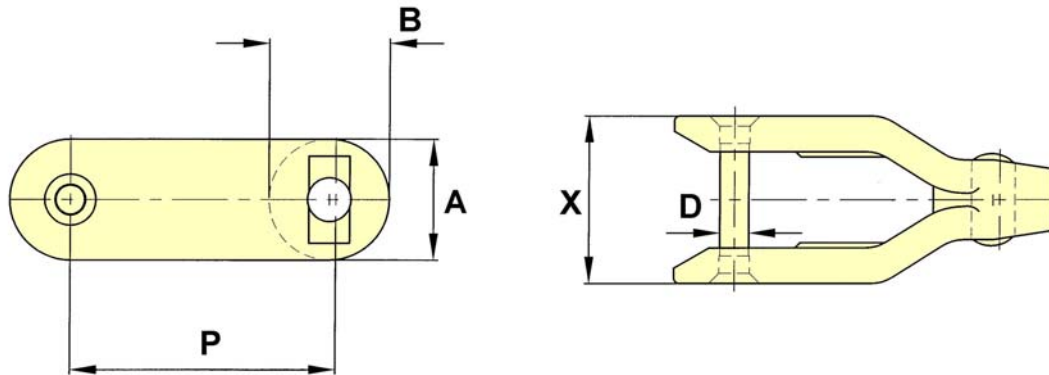
The tabular dimensions and weights are approximate and are not binding.
Design improvements may result in variation from the published figures and verification is recommended.

Plastic

Crate Conveyor Chain

CC1400 Plain Chain

Drawing no. 249

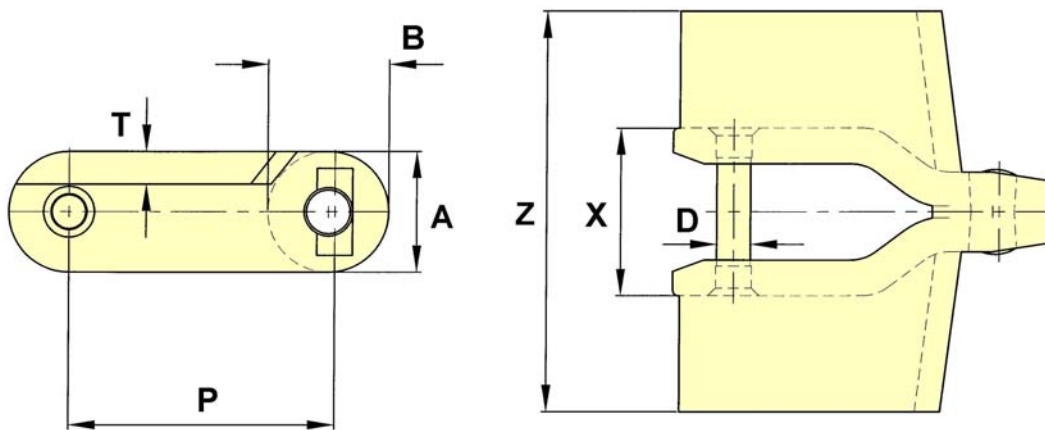


CHAIN NO.	PITCH P	ALLOW. LOAD	U.T.S.	PIN DIA. D	SIDEBAR DEPTH A	B	X	MIN. TURN RAD.
CC1400	3.25	2,640	5,000	0.38	1.48	1.48	2.07	26

NOTE: BOTH SNAP FIT AND RIVET PIN STYLES ARE AVAILABLE

CC1400 Flat Top Chain

Drawing no. 252



CHAIN NO.	PITCH P	ALLOW. LOAD	U.T.S.	PIN DIA. D	SIDEBAR DEPTH A	B	T	X	Z	MIN. TURN RAD.
CC1400FT	3.250	2,640	4,300	0.44	1.48	1.48	0.40	2.00	4.88	48

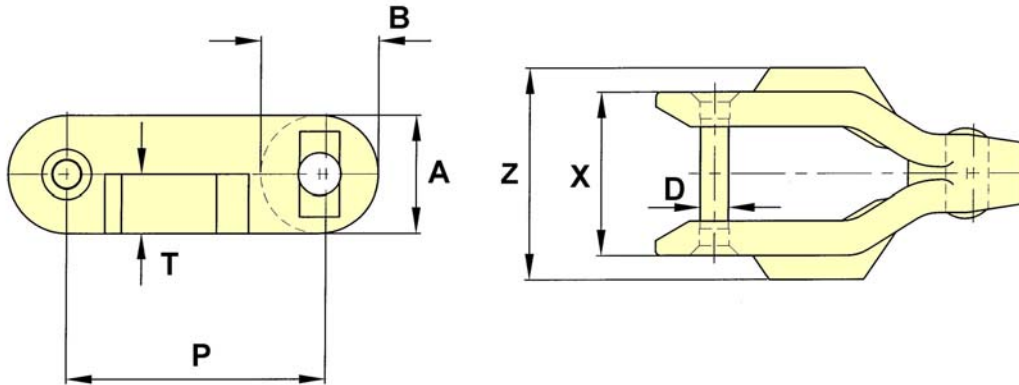
NOTE: ONLY SNAP FIT PINS ARE AVAILABLE WITH THIS CHAIN

Plastic

Crate Conveyor Chain

CC1400 D Chain Angled Lug

Drawing no. 251

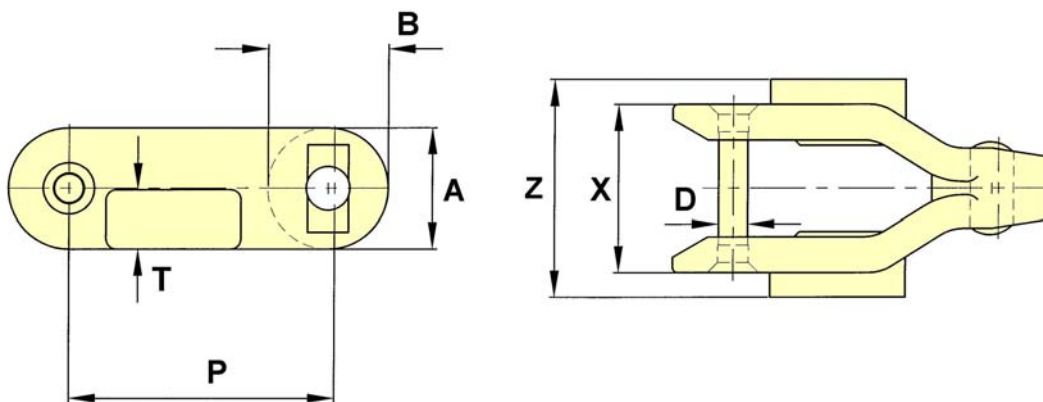


CHAIN NO.	PITCH P	ALLOW. LOAD	U.T.S.	PIN DIA. D	SIDEBAR DEPTH A	B	T	X	Z	MIN. TURN RAD.
CC1400D	3.250	2,640	5,000	0.38	1.48	1.48	0.74	2.07	2.65	26

NOTE: BOTH SNAP FIT AND RIVET PIN STYLES ARE AVAILABLE

CC1400 D Chain Square Lug

Drawing no. 250



CHAIN NO.	PITCH P	ALLOW. LOAD	U.T.S.	PIN DIA. D	SIDEBAR DEPTH A	B	T	X	Z	MIN. TURN RAD.
CC1400D	3.25	2,640	5,000	0.38	1.48	1.48	0.72	2.07	2.65	26

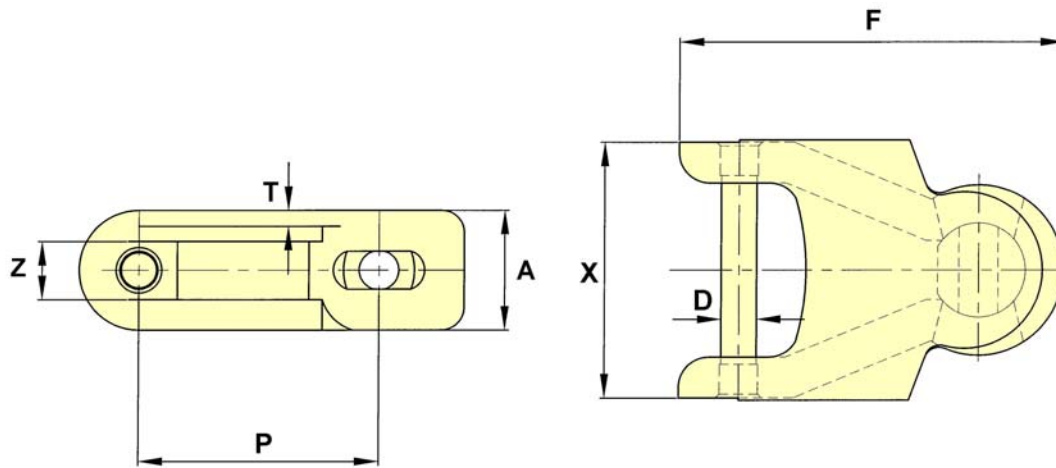
NOTE: BOTH SNAP FIT AND RIVET PIN STYLES ARE AVAILABLE

Plastic

Crate Conveyor Chain

1700 Chain

Drawing no. 256



CHAIN NO.	PITCH P	ALLOW. LOAD	U.T.S.	PIN DIA. D	SIDEBAR DEPTH A	F	T	X	Z	MIN. TURN RAD.
1700	1.968	790	1320	0.31	0.94	3.16	0.13	2.15	0.44	5.5

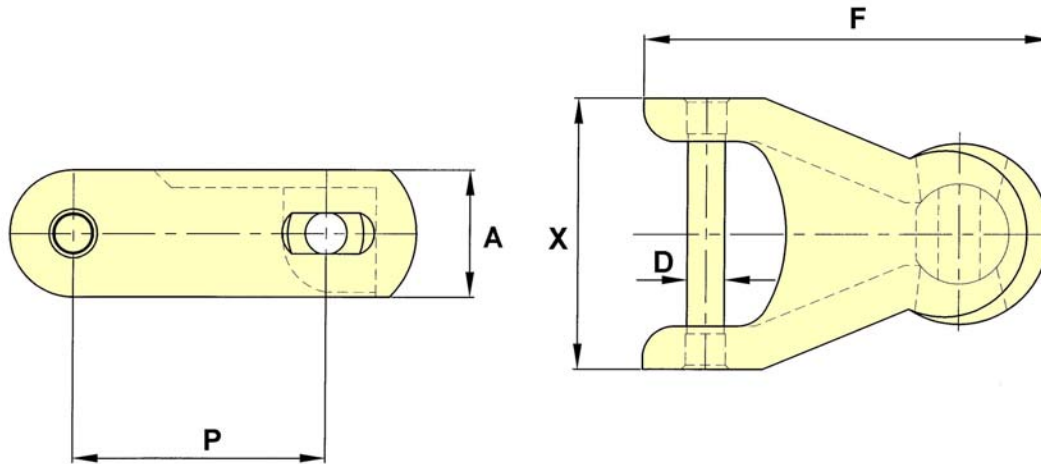
NOTE: ONLY SNAP FIT PINS ARE AVAILABLE WITH THIS CHAIN

Plastic

Crate Conveyor Chain

50mm Chain

Drawing no. 253

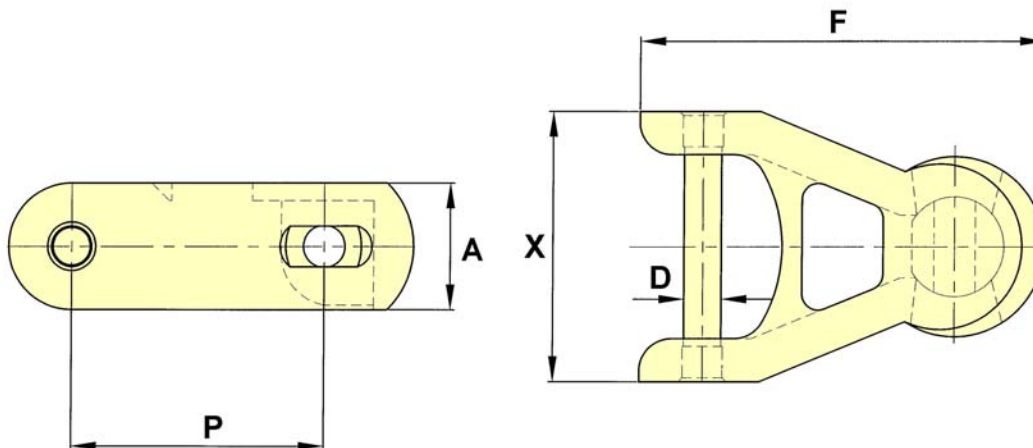


CHAIN NO.	PITCH P	ALLOW. LOAD	U.T.S.	PIN DIA. D	SIDEBAR DEPTH A	F	X	MIN. TURN RAD.
50 mm	1.968	1,320	2,200	0.31	0.98	3.16	2.10	5.50

NOTE: BOTH SNAP FIT AND KNURL PIN STYLES ARE AVAILABLE

50mm Open Top Chain

Drawing no. 254



CHAIN NO.	PITCH P	ALLOW. LOAD	U.T.S.	PIN DIA. D	SIDEBAR DEPTH A	F	X	MIN. TURN RAD.
50 mm	1.968	1,320	2,200	0.31	0.98	3.16	2.10	5.50

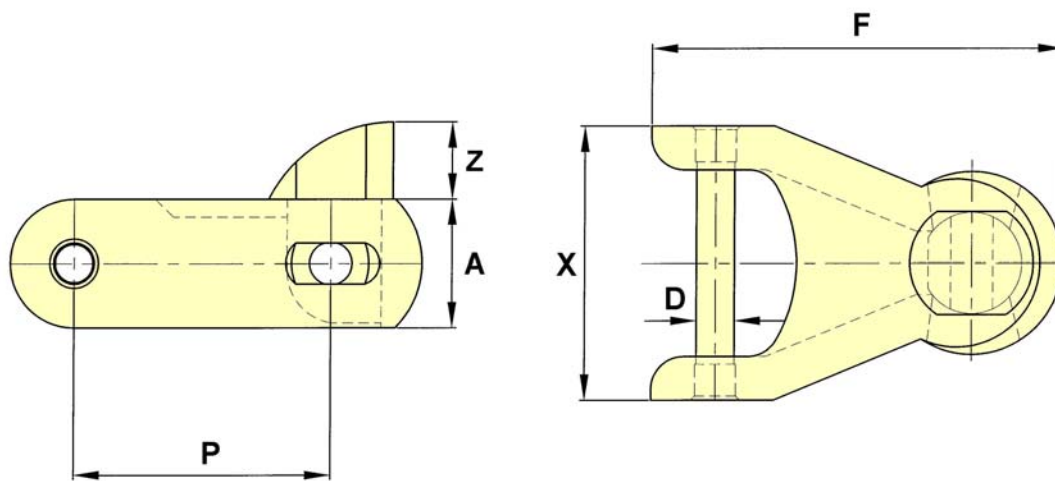
NOTE: BOTH SNAP FIT AND KNURL PIN STYLES ARE AVAILABLE

Plastic

Crate Conveyor Chain

50mm Chain with Pusher Attachment

Drawing no. 255



CHAIN NO.	PITCH	ALLOW. LOAD	U.T.S.	PIN DIA.	SIDEBAR DEPTH	F	X	Z	MIN. TURN RAD.
	P			D	A				
50 mm	1.968	1,320	2,200	0.31	0.98	3.16	2.10	0.59	5.50

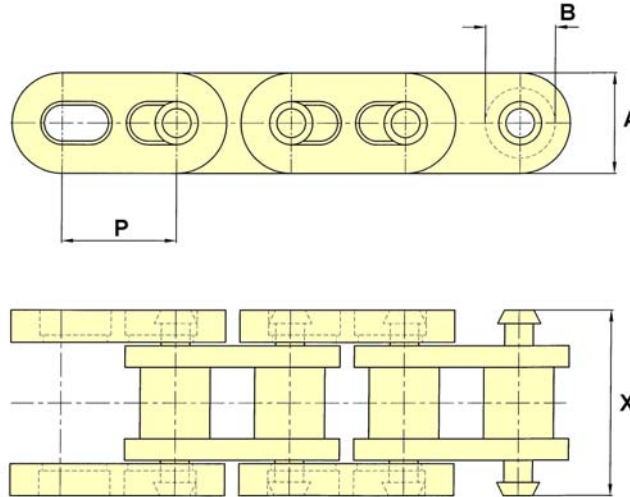
NOTE: BOTH SNAP FIT AND KNURL PIN STYLES ARE AVAILABLE

Plastic

Crate Conveyor Chain

1/2" Pitch Straight Running Chain

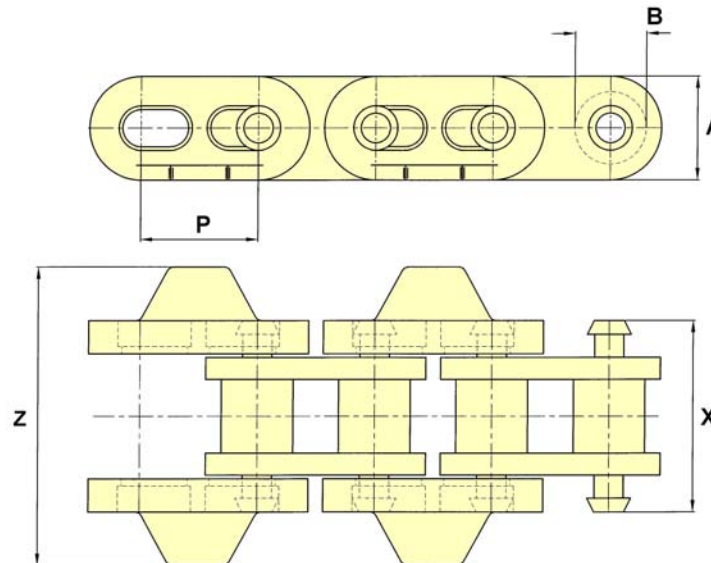
Drawing no. 257



CHAIN NO.	PITCH P	ALLOW. LOAD	U.T.S.	SIDEBAR DEPTH A	BUSH DIA. B	X
1/2"	0.5			0.44	0.31	0.82

1/2" Pitch Side Flexing Chain

Drawing no. 258



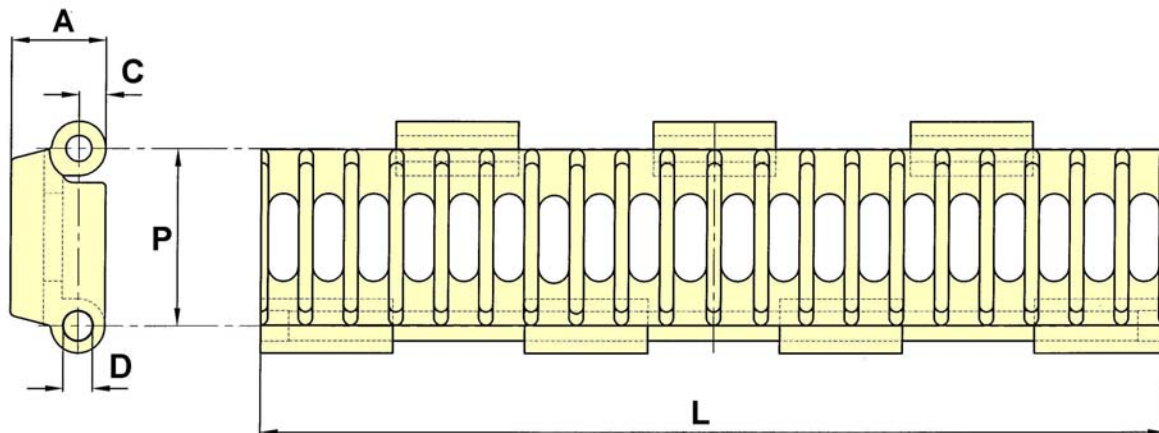
CHAIN NO.	PITCH P	ALLOW. LOAD	U.T.S.	SIDEBAR DEPTH A	BUSH DIA. B	X	Z
1/2"	0.5			0.44	0.31	0.82	1.27

Plastic

Crate Conveyor Chain

Ventilated Modular Slat Chain

Drawing no. 240



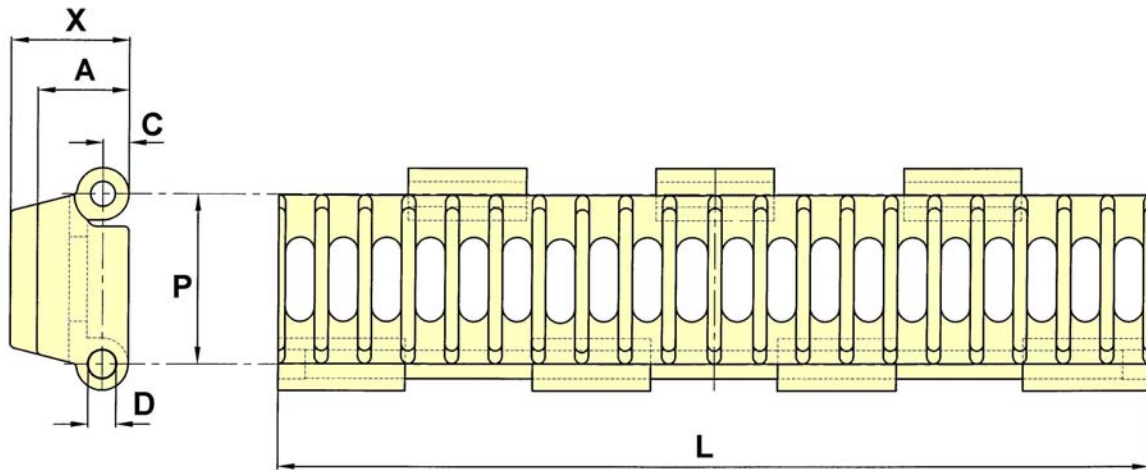
CHAIN NO.	PITCH	ALLOW. LOAD	U.T.S.	PIN DIA.	SIDEBAR DEPTH		
	P			D	A	C	L
VMS	1.170			0.16	0.62	0.18	6.00

Plastic

Crate Conveyor Chain

Ventilated Modular Slat Chain with Pusher Attachment

Drawing no. 241



CHAIN NO.	PITCH P	ALLOW. LOAD	U.T.S.	PIN DIA. D	SIDEBAR DEPTH A	C	L	X
VMS PUSHER	1.170			0.16	0.62	0.18	6.00	0.92

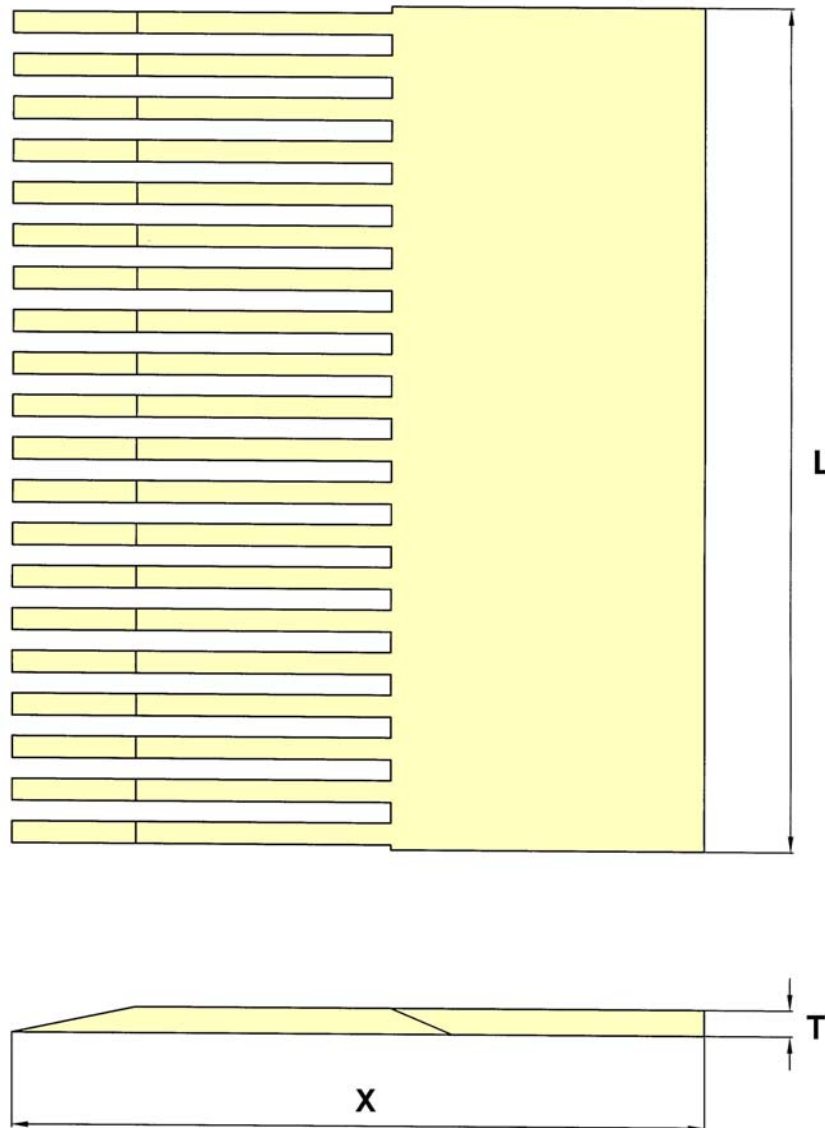
NOTE: THE STRAIGHT RUNNING VMS SLAT CHAIN CAN BE ARRANGED TO TRAVEL IN EITHER DIRECTION. THESE 6" WIDE MODULAR UNITS, INCORPORATING A 0.16" (4mm) DIA. STAINLESS STEEL PIN, CAN BE JOINED TO PRODUCE A MAXIMUM TOTAL WIDTH OF 54".

Plastic

Crate Conveyor Chain

Ventilated Modular Slat Transfer Plate

Drawing no. 242



L	T	X
6.00	0.18	4.92

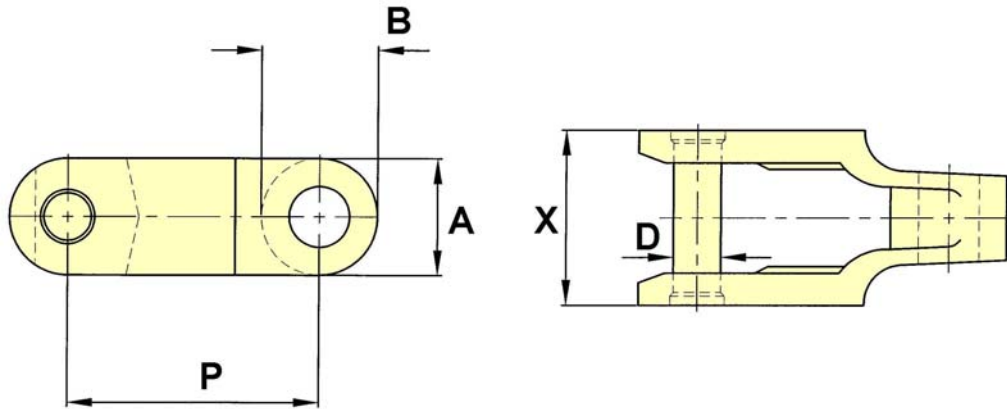
The tabular dimensions and weights are approximate and are not binding.
Design improvements may result in variation from the published figures and verification is recommended.

Malleable

Crate Conveyor Chain

CC600 / CC625 Chain

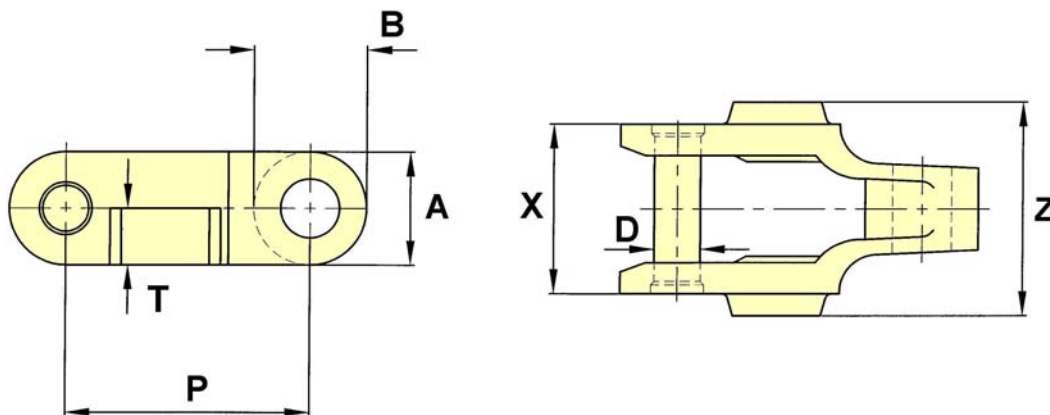
Drawing no. 228



CHAIN NO.	PITCH P	ALLOW. LOAD	U.T.S.	PIN DIA. D	SIDEBAR DEPTH A	B	X	MIN. TURN RAD.
CC600	2.500	1,500	12,500	0.44	1.13	1.13	1.69	21
CC625	2.520	1,500	12,500	0.44	1.13	1.13	1.69	21

CC600 D Chain

Drawing no. 229



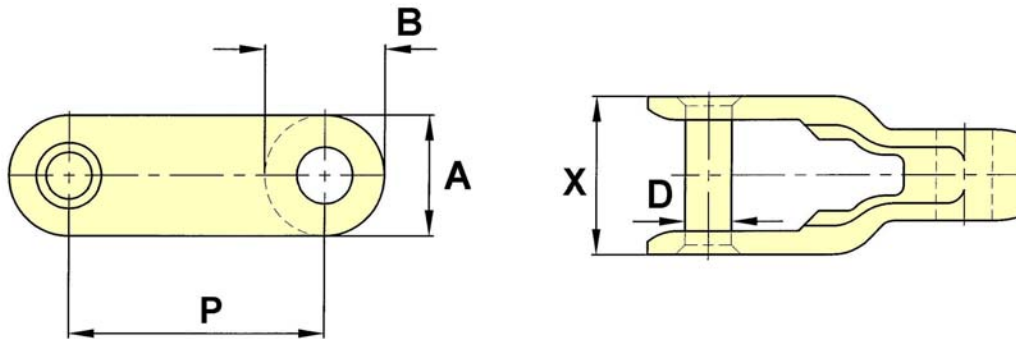
CHAIN NO.	PITCH P	ALLOW. LOAD	U.T.S.	PIN DIA. D	SIDEBAR DEPTH A	B	T	X	Z	MIN. TURN RAD.
CC600D	2.500	1,500	12,500	0.44	1.13	1.13	0.56	1.69	2.13	21

Malleable

Crate Conveyor Chain

CC1300 Chain

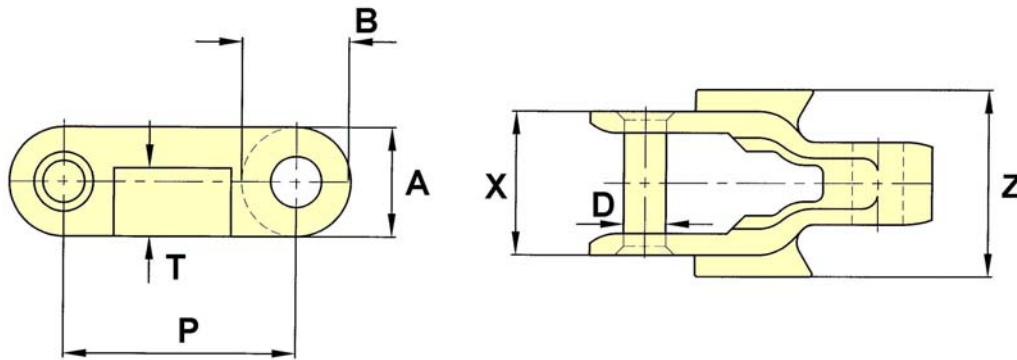
Drawing no. 230



CHAIN NO.	PITCH P	ALLOW. LOAD	U.T.S.	PIN DIA. D	SIDEBAR DEPTH A	B	X	MIN. TURN RAD.
CC1300	3.25	2,250	24,200	0.56	1.50	1.50	2.00	39

CC1300 D Chain

Drawing no. 231



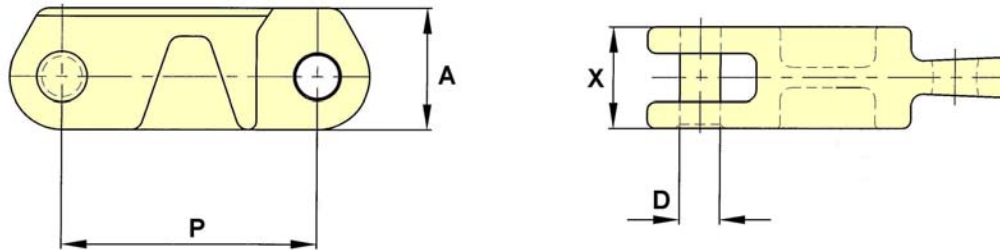
CHAIN NO.	PITCH P	ALLOW. LOAD	U.T.S.	PIN DIA. D	SIDEBAR DEPTH A	B	X	Z	MIN. TURN RAD.
CC1300D	3.25	2,250	24,200	0.56	1.5	1.5	2	2.56	39

Malleable

Crate Conveyor Chain

CC400 Chain

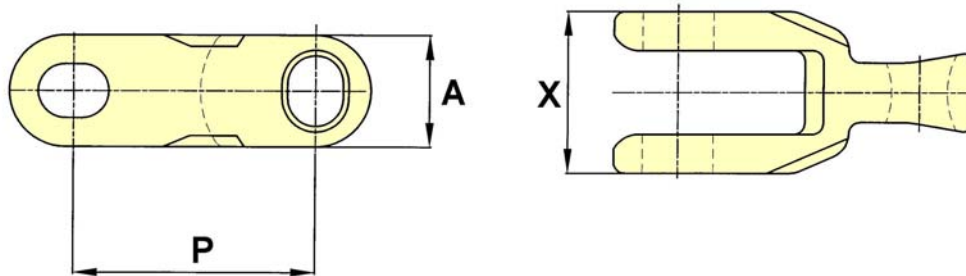
Drawing no. 233



CHAIN NO.	PITCH P	ALLOW. LOAD	U.T.S.	PIN DIA. D	SIDEBAR DEPTH A	X	MIN. TURN RAD.
CC400	4.000	2,250	30,000	0.59	1.81	1.53	98

F801 Chain

Drawing no. 232



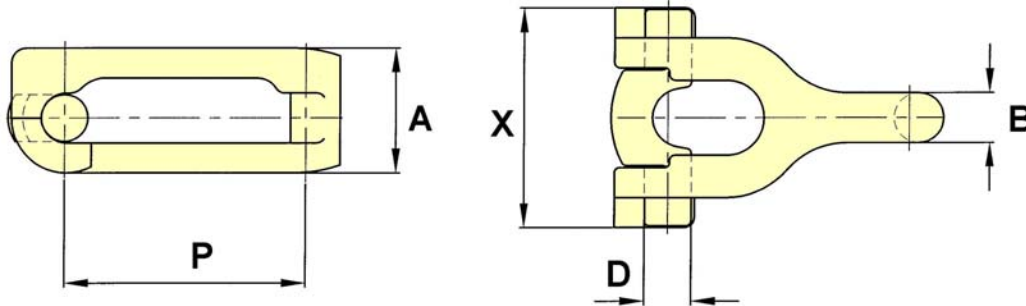
CHAIN NO.	PITCH P	ALLOW. LOAD	U.T.S.	SIDEBAR DEPTH A	X	MIN. TURN RAD.
F801	2.730	1,500	13,200	1.18	1.71	

Malleable

Crate Conveyor Chain

RD10A Chain

Drawing no. 234



CHAIN NO.	PITCH P	ALLOW. LOAD	U.T.S.	PIN DIA. D	SIDEBAR DEPTH A	B	X	MIN. TURN RAD.
RD10A	3.000		11,000	0.56	1.61	0.63	2.75	18