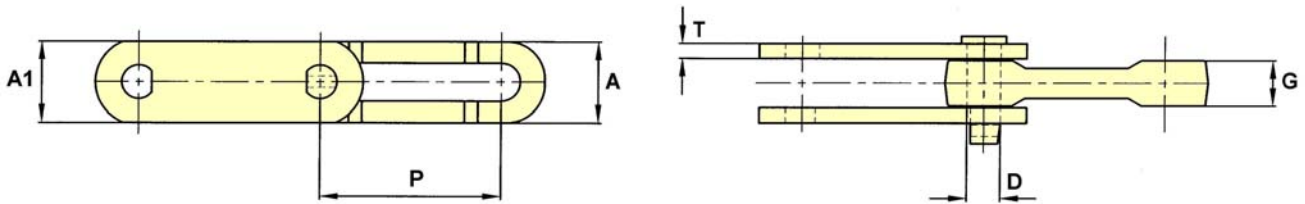


Bar Link Chain

Plain Chain

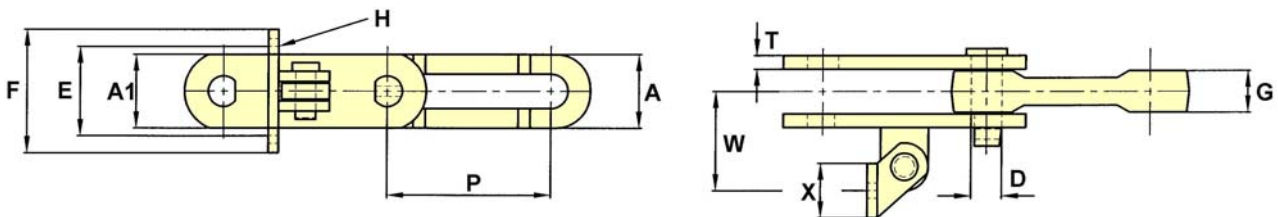
Drawing no. 105



CHAIN NO.	PITCH P	ALLOW. LOAD	U.T.S.	PIN DIA. D	INNER SIDE DEPTH A	OUT. SIDE DEPTH A1	MAX. GEARING G	T
S3699	6.031	6,000	130,000	1.12	2.50	2.88	1.56	0.50
B5283	6.031	6,400	136,000	1.12	2.50	2.69	1.63	0.50

AS2 Attachment

Drawing no. 3



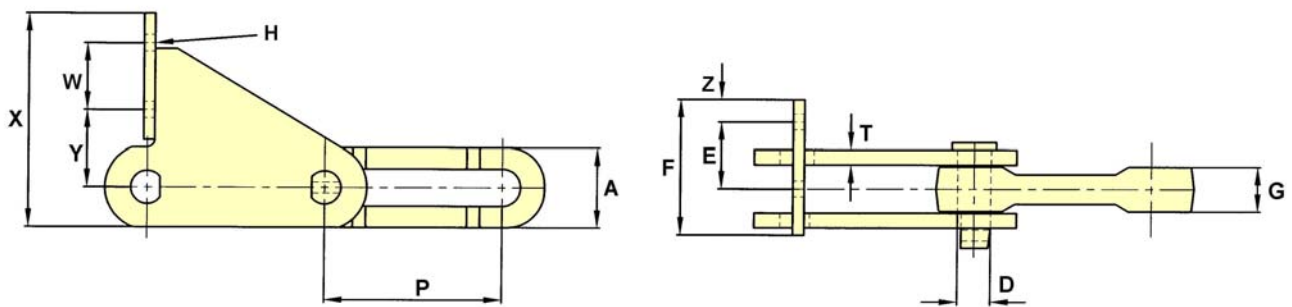
CHAIN NO.	PITCH P	ALLOW. LOAD	U.T.S.	PIN DIA. D	INNER SIDE DEPTH A	OUTER SIDE DEPTH A1	MAX. GEARING G	E	F	BOLT DIA. H	T	W	X
B5283	6.031	6,400	136,000	1.12	2.50	2.69	1.63	3.25	4.50	0.50	0.50	3.63	2.00

The tabular dimensions and weights are approximate and are not binding.
Design improvements may result in variation from the published figures and verification is recommended.

Bar Link Chain

Pusher Attachment

Drawing no. 59



CHAIN NO.	PITCH P	ALLOW. LOAD	U.T.S.	PIN DIA. D	SIDEBAR DEPTH A	MAX. GEARING G	E	F	BOLT DIA. H	T	W	X	Y	Z
B5283	6.031	6,400	136,000	1.12	2.69	1.63	2.25	4.56	0.5	0.5	2.25	7.19	2.6	0.75

The tabular dimensions and weights are approximate and are not binding.
Design improvements may result in variation from the published figures and verification is recommended.