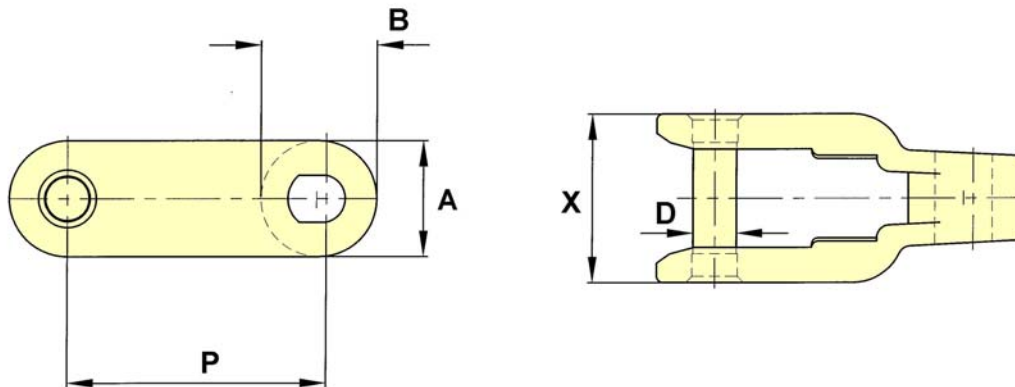


Plastic

Bakery Chains

CC600 Chain Plain Chain

Drawing no. 243



CHAIN	PITCH P	ALLOW. LOAD	U.T.S.	PIN DIA. D	SIDEBAR DEPTH A	B	X	MIN. TURN RAD.
CC600	2.500	1,850	3,400	0.44	1.13	1.13	1.63	30

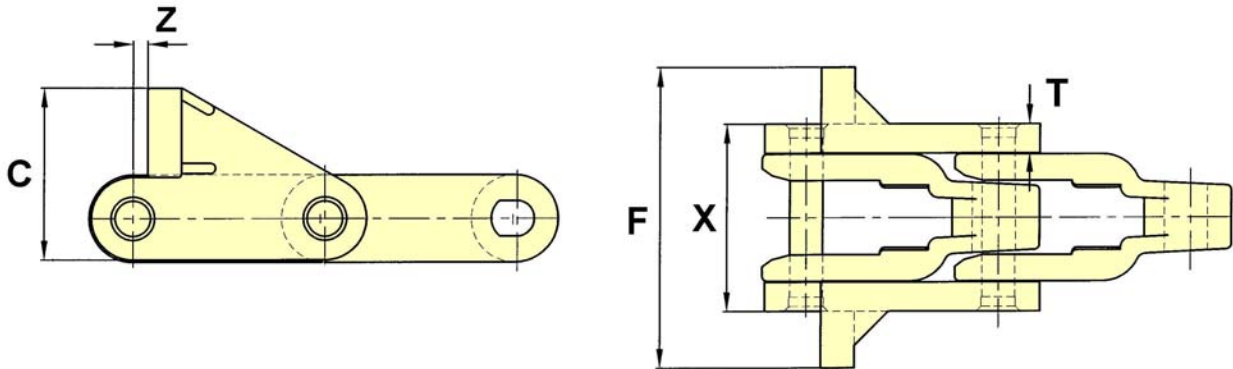
NOTE: BOTH SNAP FIT AND CIRCLIP PIN STYLES ARE AVAILABLE

Plastic

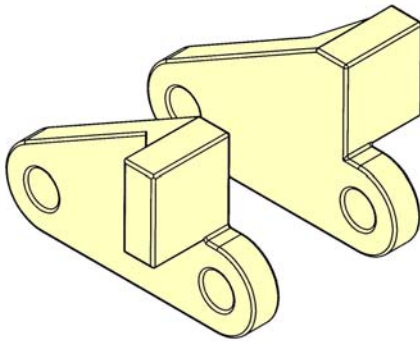
Bakery Chains

CC600 Chain with S Pusher Attachment

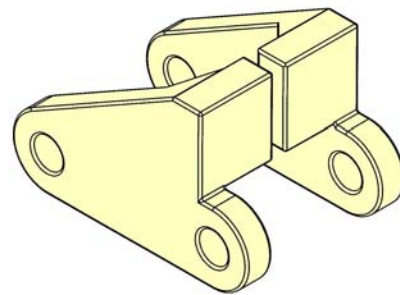
Drawing no. 244



C	F	T	X	Z
2.20	3.87	0.38	2.44	0.19



Attachments Facing Outwards



Attachments Facing Inwards

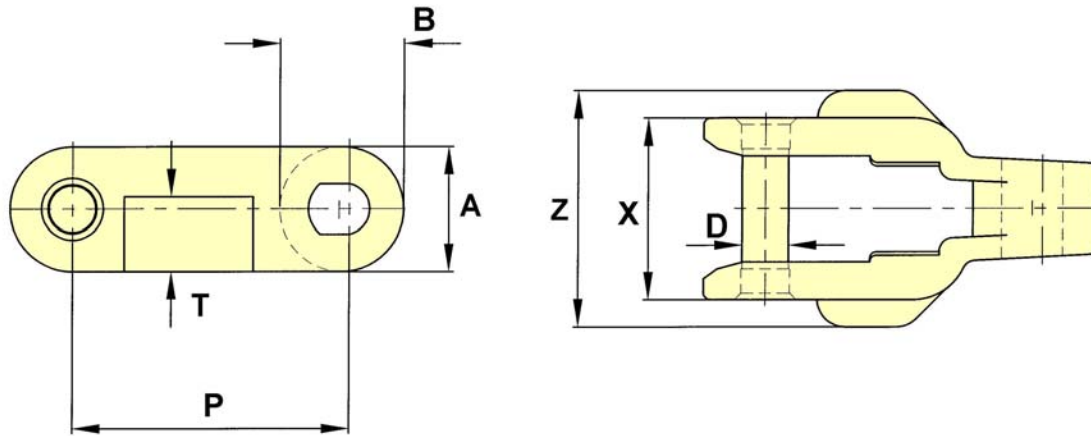
THESE PUSHER ATTACHMENTS CAN BE FITTED EITHER INWARDS OR OUTWARDS, AS SHOWN ABOVE, AND ARE FITTED TO THE OUTER FACES OF THE STANDARD CC600 CHAIN, AT ANY INTERVAL ALONG ITS LENGTH. IT CAN ONLY BE USED ON STRAIGHT RUNNING ACETAL CHAINS, UTILISING AN EXTENDED CIRCLIP PIN.

Plastic

Bakery Chains

CC600 D Chain

Drawing no. 245

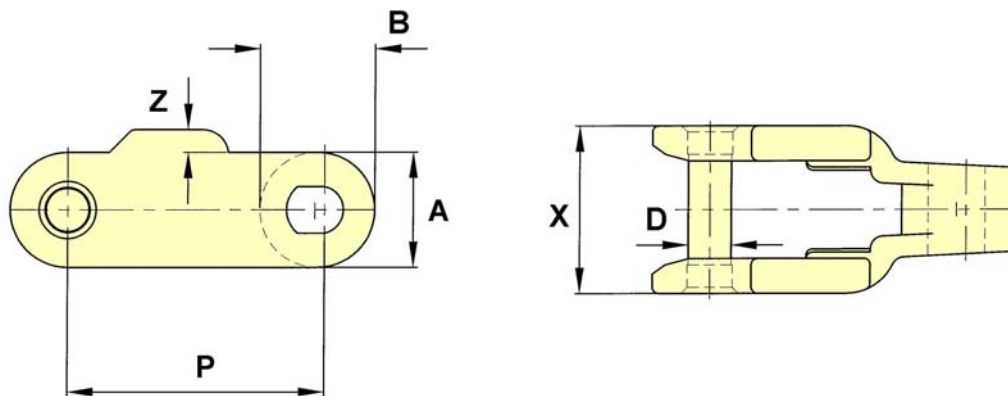


CHAIN	PITCH P	ALLOW. LOAD	U.T.S.	PIN DIA. D	SIDEBAR DEPTH A	B	T	X	Z	MIN. TURN RAD.
CC600D	2.500	1,850	3,400	0.44	1.13	1.13	0.67	1.65	2.12	30

NOTE: BOTH SNAP FIT AND CIRCLIP PIN STYLES ARE AVAILABLE

CC600 F Chain

Drawing no. 246



CHAIN	PITCH P	ALLOW. LOAD	U.T.S.	PIN DIA. D	SIDEBAR DEPTH A	B	X	Z	MIN. TURN RAD.
CC600F	2.500	1,850	3,400	0.44	1.13	1.13	1.62	0.22	30

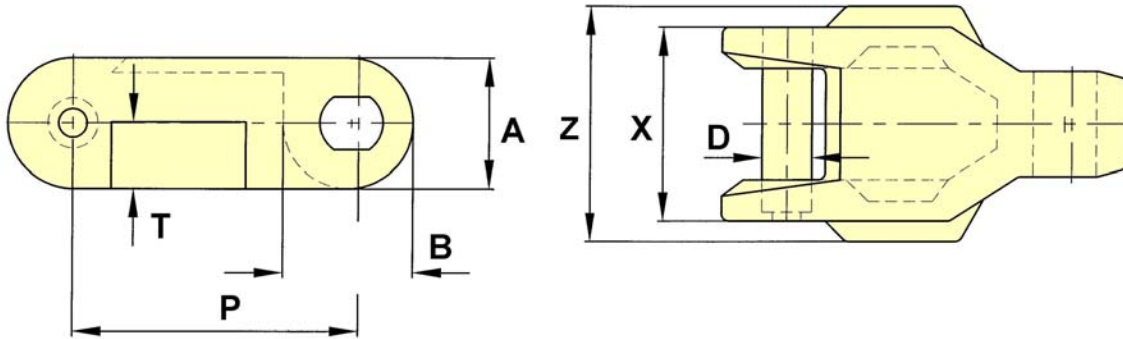
NOTE: BOTH SNAP FIT AND CIRCLIP PIN STYLES ARE AVAILABLE

Plastic

Bakery Chains

CC600 DB Chain

Drawing no. 247

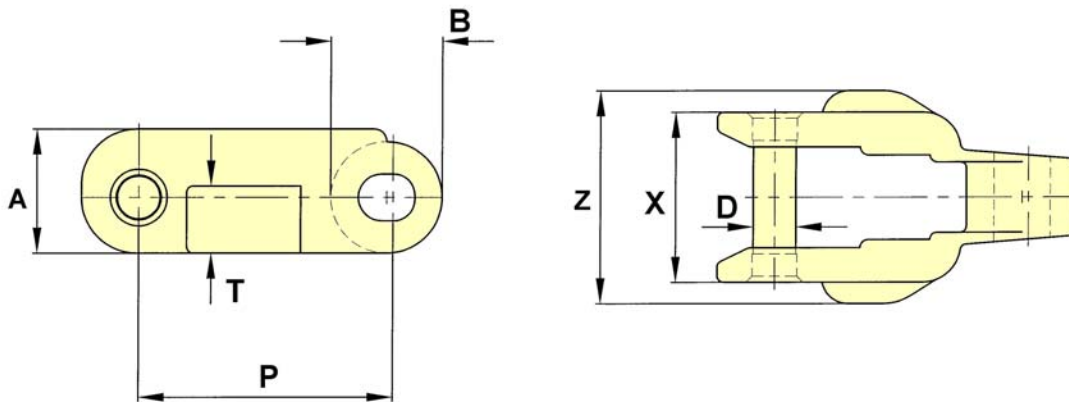


CHAIN	PITCH P	ALLOW. LOAD	U.T.S.	PIN DIA. D	SIDEBAR DEPTH A	B	T	X	Z	MIN. TURN RAD.
CC600DB	2.500	1,850	2,900	0.44	1.14	1.14	0.58	1.69	2.05	30

NOTE: THIS CHAIN IS SUPPLIED WITH KNURLED PINS ONLY

CC631 D Chain

Drawing no. 248



CHAIN	PITCH P	ALLOW. LOAD	U.T.S.	PIN DIA. D	SIDEBAR DEPTH A	B	T	X	Z	MIN. TURN RAD.
CC631D	2.500	1,470	2,310	0.44	1.22	1.10	0.66	1.67	2.09	21

NOTE: THIS CHAIN IS SUPPLIED WITH SNAP FIT PINS ONLY

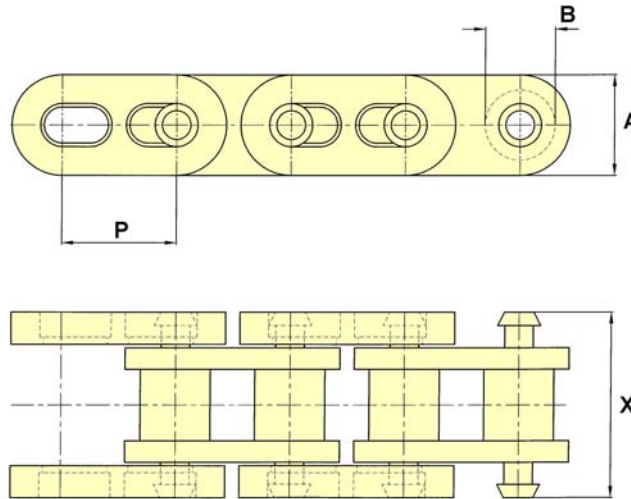
The tabular dimensions and weights are approximate and are not binding.
Design improvements may result in variation from the published figures and verification is recommended.

Plastic

Bakery Chains

1/2" Pitch Straight Running Chain

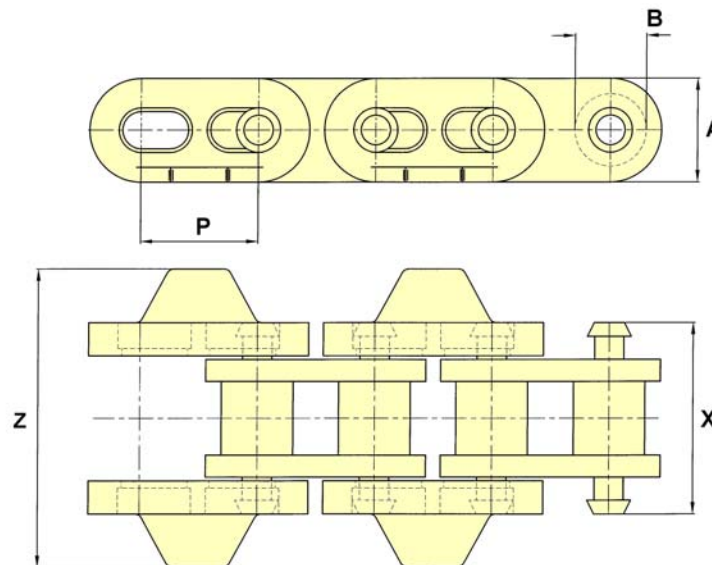
Drawing no. 257



CHAIN NO.	PITCH P	ALLOW. LOAD	U.T.S.	SIDEBAR DEPTH A	BUSH DIA. B	X
1/2"	0.5			0.44	0.31	0.82

1/2" Pitch Side Flexing Chain

Drawing no. 258



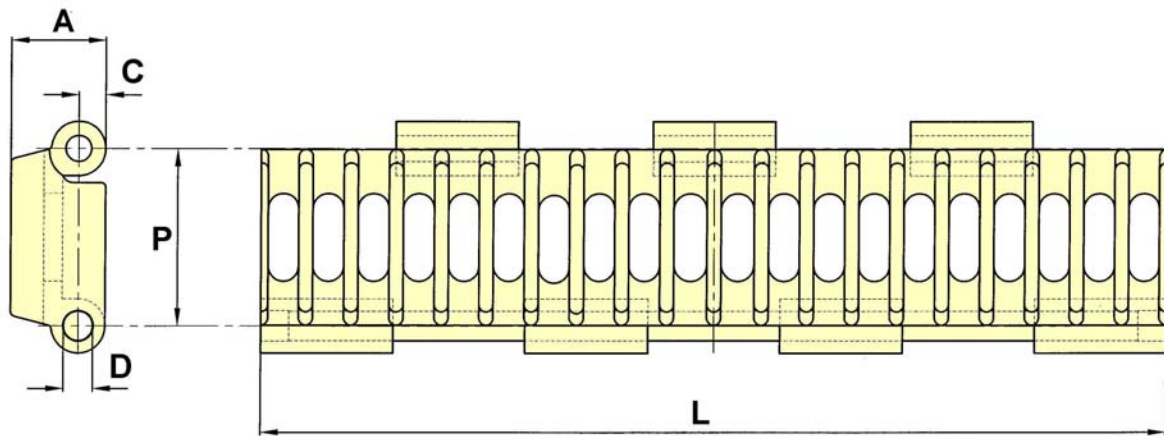
CHAIN NO.	PITCH P	ALLOW. LOAD	U.T.S.	SIDEBAR DEPTH A	BUSH DIA. B	X	Z
1/2"	0.5			0.44	0.31	0.82	1.27

Plastic

Bakery Chains

Ventilated Modular Slat Chain

Drawing no. 240



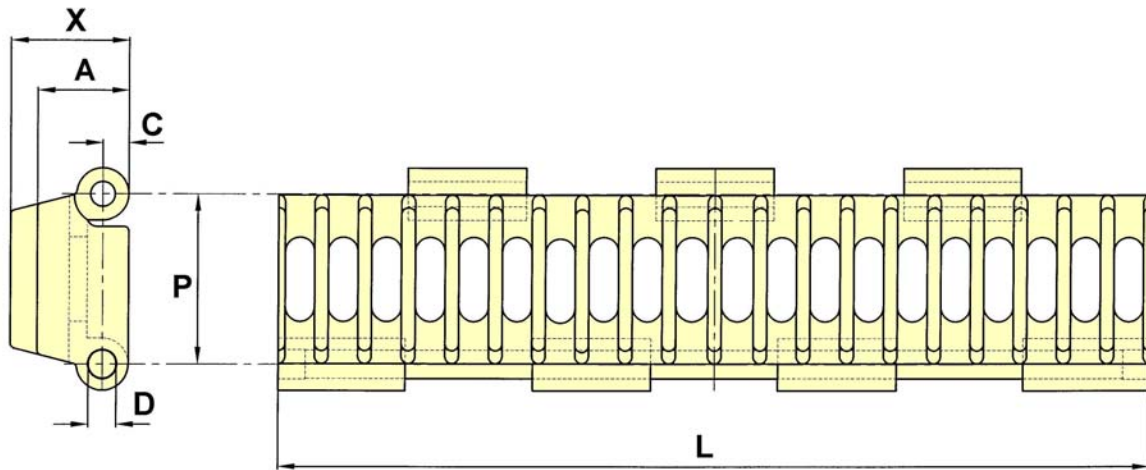
CHAIN NO.	PITCH	ALLOW. LOAD	U.T.S.	PIN DIA.	SIDEBAR DEPTH		
	P			D	A	C	L
VMS	1.170			0.16	0.62	0.18	6.00

Plastic

Bakery Chains

Ventilated Modular Slat Chain with Pusher Attachment

Drawing no. 241



CHAIN NO.	PITCH P	ALLOW. LOAD	U.T.S.	PIN DIA. D	SIDEBAR DEPTH A	C	L	X
VMS PUSHER	1.170			0.16	0.62	0.18	6.00	0.92

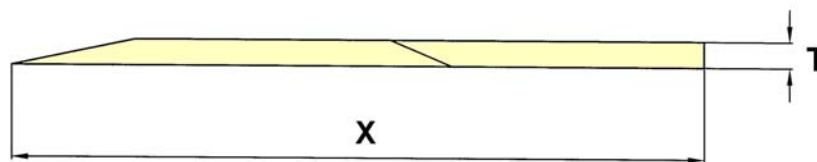
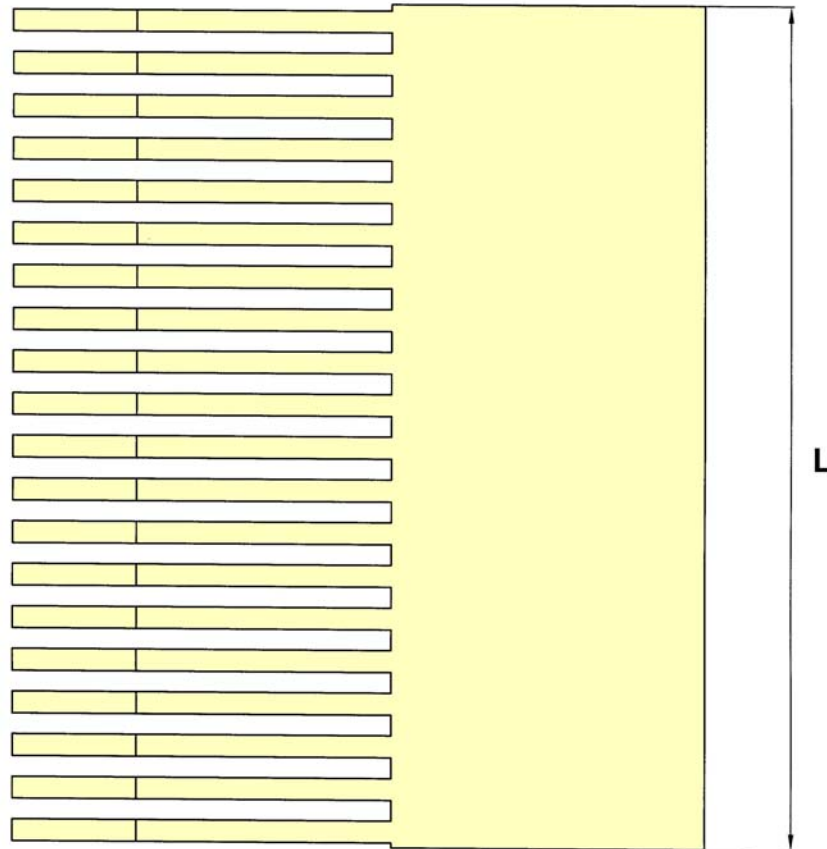
NOTE: THE STRAIGHT RUNNING VMS SLAT CHAIN CAN BE ARRANGED TO TRAVEL IN EITHER DIRECTION. THESE 6" WIDE MODULAR UNITS, INCORPORATING A 0.16" (4mm) DIA. STAINLESS STEEL PIN, CAN BE JOINED TO PRODUCE A MAXIMUM TOTAL WIDTH OF 54".

Plastic

Bakery Chains

Ventilated Modular Slat Transfer Plate

Drawing no. 242



	T	X
6.00	0.18	4.92

The tabular dimensions and weights are approximate and are not binding.
Design improvements may result in variation from the published figures and verification is recommended.