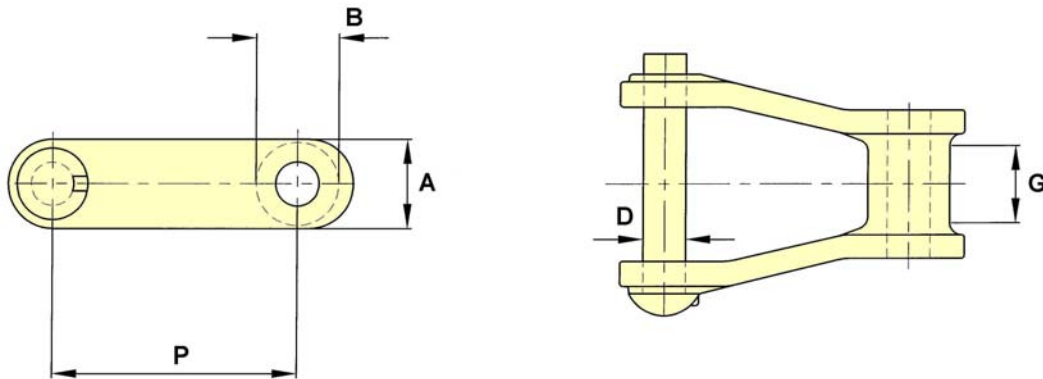


American Pintle Chains

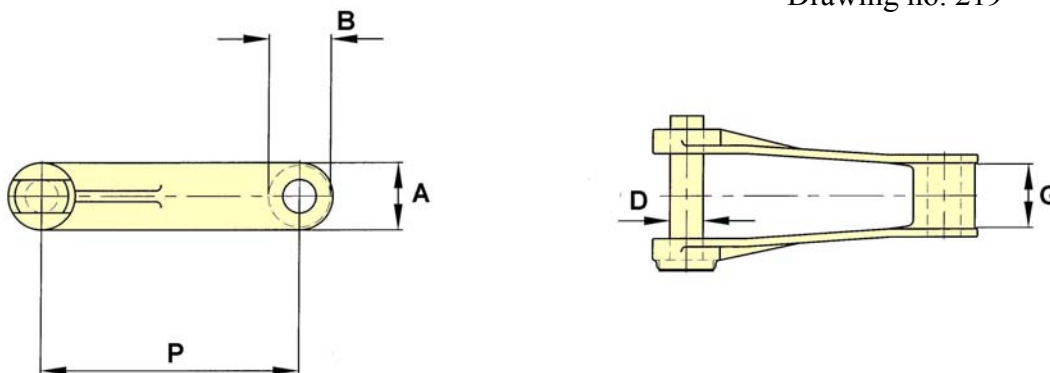
Plain Chain

Drawing no. 221



CHAIN NO.	PITCH P	ALLOW. LOAD	U.T.S.	PIN DIA. D	SIDEBAR DEPTH A	MAX. GEARING G	BUSH DIA. B
442	1.375	830	6,000	0.31	0.75	0.63	0.56
445	1.630	830	6,000	0.31	0.75	0.69	0.63
452	1.506	970	7,000	0.38	0.84	0.63	0.69
455	1.630	1,060	7,300	0.38	0.84	0.69	0.63
462	1.634	1,500	9,000	0.44	0.94	0.81	0.72
467	2.308	950	6,000	0.31	0.78	0.75	0.66
477	2.308	1,400	9,600	0.44	1.00	0.69	0.81
488	2.609	1,800	11,000	0.44	1.00	0.75	0.88
4103	3.075	3,500	22,000	0.75	1.50	1.00	1.25

Drawing no. 219



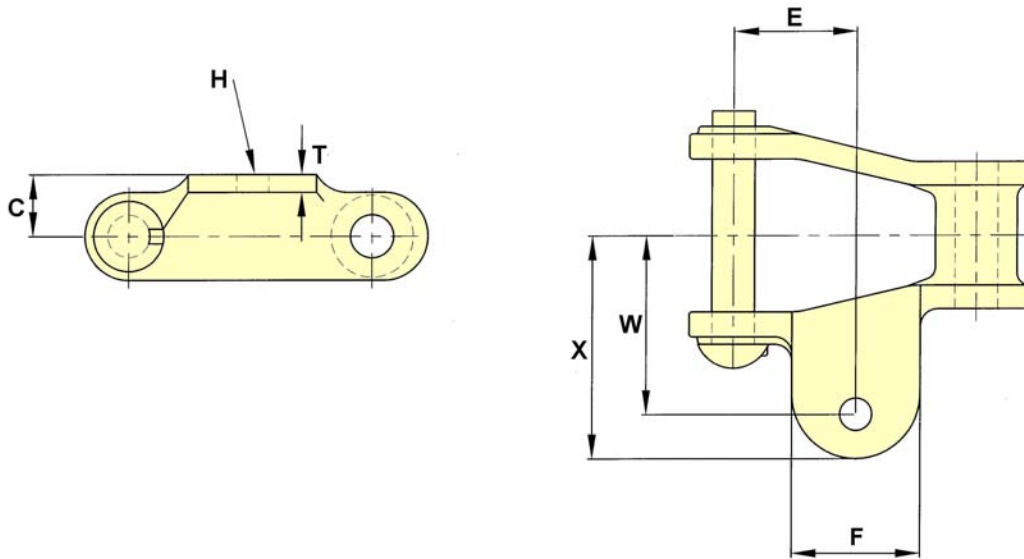
CHAIN NO.	PITCH P	ALLOW. LOAD	U.T.S.	PIN DIA. D	SIDEBAR DEPTH A	MAX. GEARING G	BUSH DIA. B
720S	6.000	3,450	37,500	0.75	1.56	1.13	1.44

The tabular dimensions and weights are approximate and are not binding.
Design improvements may result in variation from the published figures and verification is recommended.

American Pintle Chains

A1 Attachment

Drawing no. 223



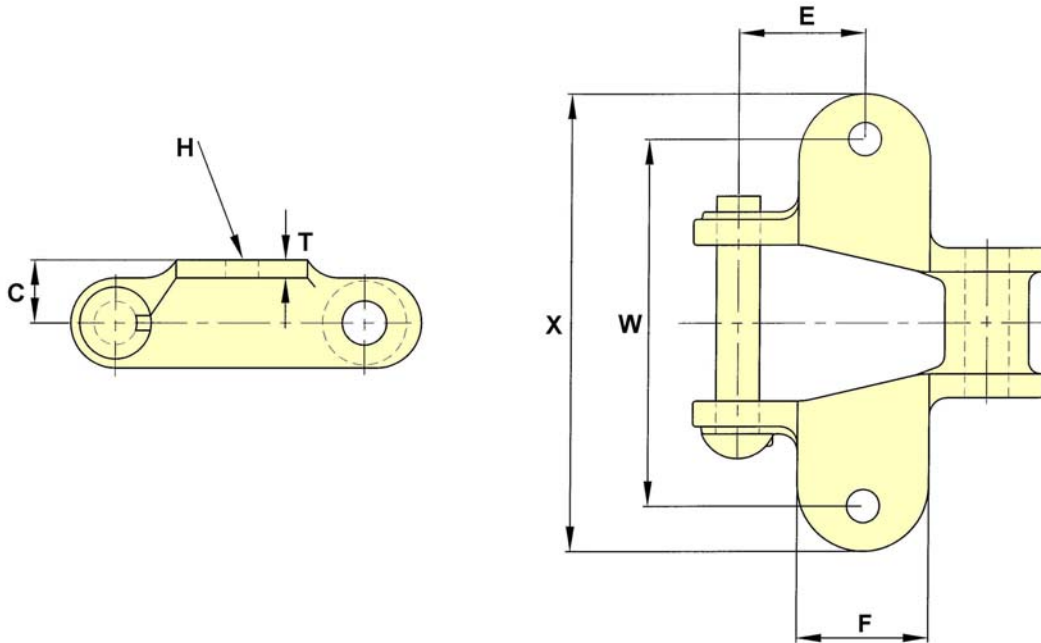
CHAIN NO.	C	E	F	BOLT DIA. H	T	W	X
445	0.38	0.75	0.88	0.25	0.19	1.16	1.60

The tabular dimensions and weights are approximate and are not binding.
Design improvements may result in variation from the published figures and verification is recommended.

American Pintle Chains

K1 Attachment

Drawing no. 222



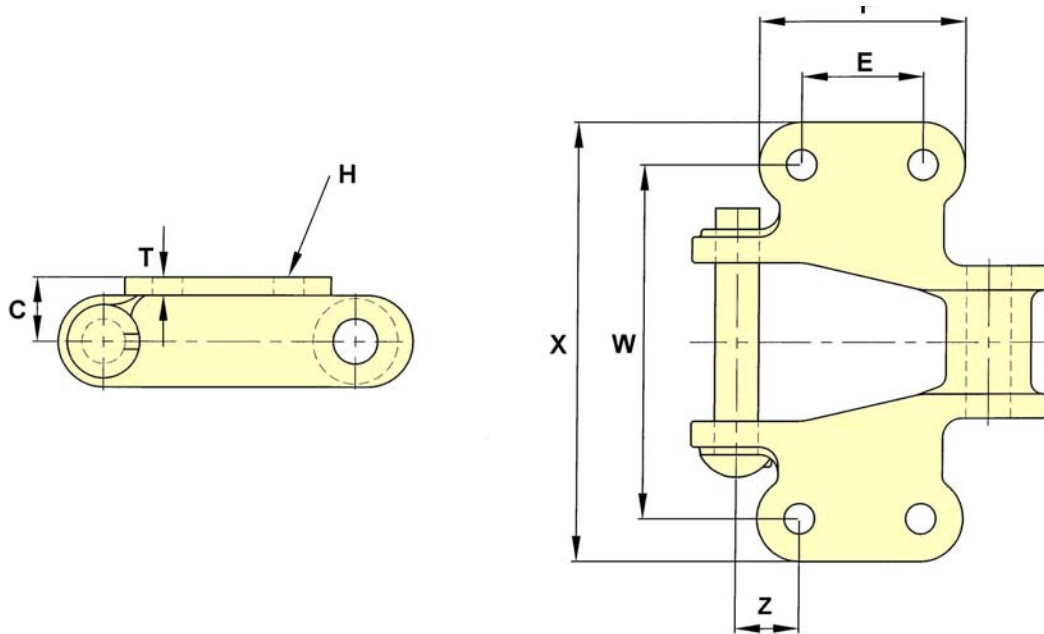
CHAIN NO.	C	E	F	BOLT DIA.	T	W	X
				H			
445	0.44	0.72	0.94	0.19	0.13	2.06	2.81
452	0.44	0.75	0.72	0.19	0.16	2.06	2.75
455	0.44	0.81	0.81	0.25	0.16	2.00	2.88
462	0.50	0.81	0.94	0.25	0.16	2.38	3.25
467	0.69	1.16	1.13	0.25	0.13	3.00	4.00
477	0.66	1.16	1.38	0.25	0.16	3.00	3.94
488	0.69	1.31	1.44	0.31	0.22	3.81	4.75

The tabular dimensions and weights are approximate and are not binding.
Design improvements may result in variation from the published figures and verification is recommended.

American Pintle Chains

K2 Attachment

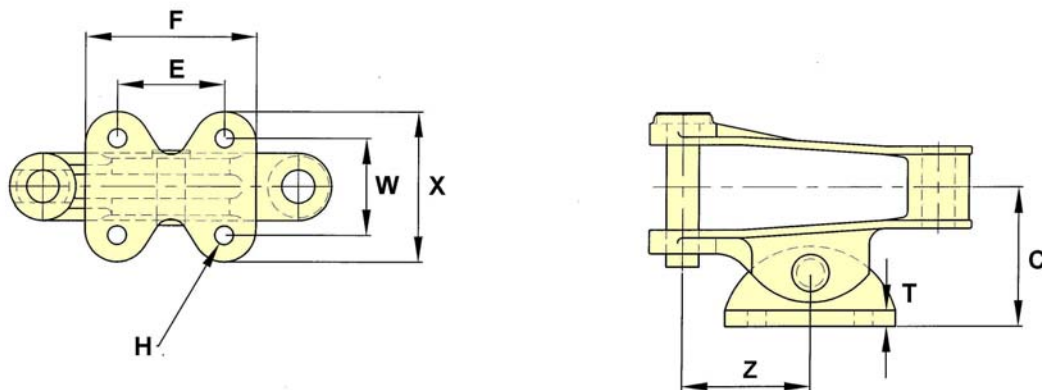
Drawing no. 226



CHAIN NO.	C	E	F	BOLT DIA H	T	W	X	Z
477	0.66	0.81	1.56	0.25	0.13	3.00	4.00	0.75

AS20 Attachment

Drawing no. 220



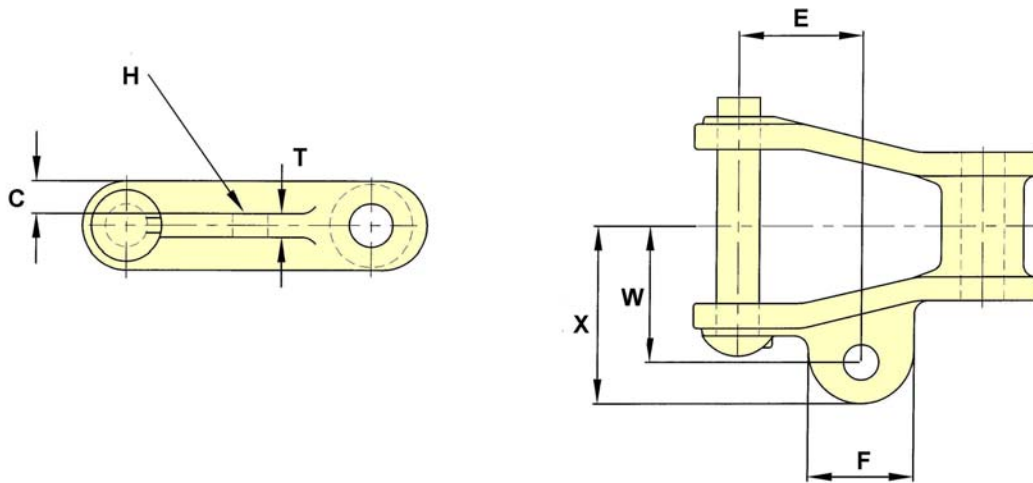
CHAIN NO.	C	E	F	BOLT DIA H	T	W	X	Z
720S	3.25	2.50	4.00	0.38	0.38	2.25	3.50	3.00

The tabular dimensions and weights are approximate and are not binding.
Design improvements may result in variation from the published figures and verification is recommended.

American Pintle Chains

A22 Attachment

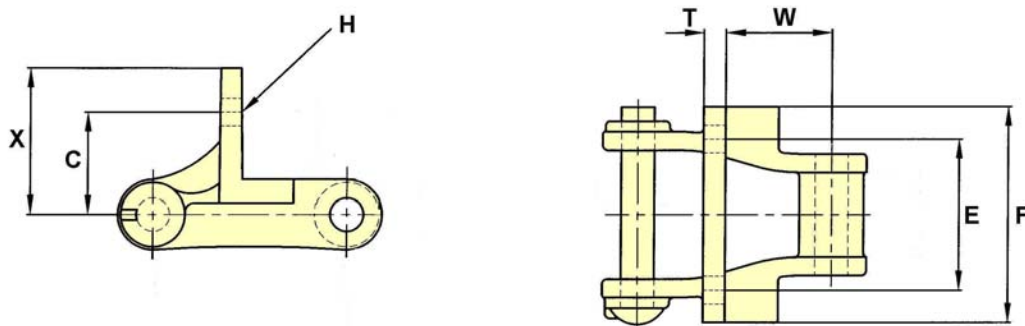
Drawing no. 224



CHAIN NO.	C	E	F	BOLT DIA H	T	W	X
477	0.38	1.13	0.88	0.31	0.25	1.50	1.88

F2 Attachment

Drawing no. 115 A



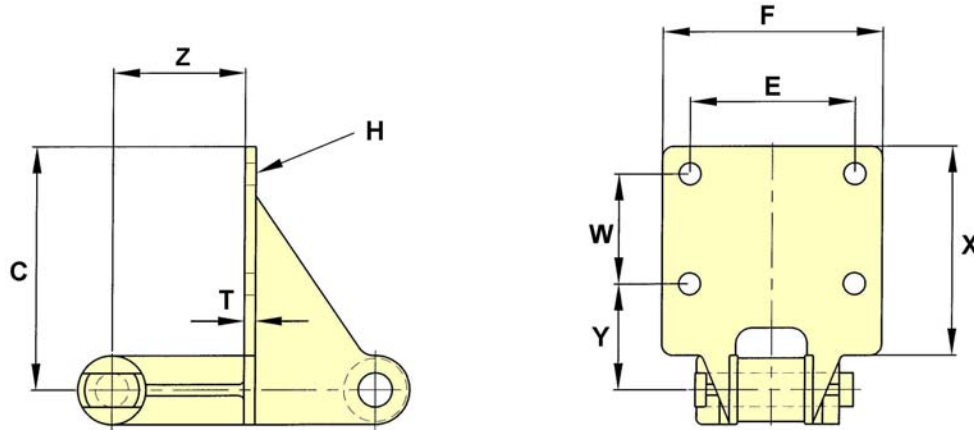
CHAIN NO.	C	E	F	BOLT DIA H	T	W	X
455	0.94	1.063	1.81	0.19	0.16	0.85	1.23
477	1.44	1.75	2.63	0.31	0.25	1.31	2.00
488	1.38	2.03	2.94	0.31	0.31	1.56	2.00

The tabular dimensions and weights are approximate and are not binding. Design improvements may result in variation from the published figures and verification is recommended.

American Pintle Chains

F3 Attachment

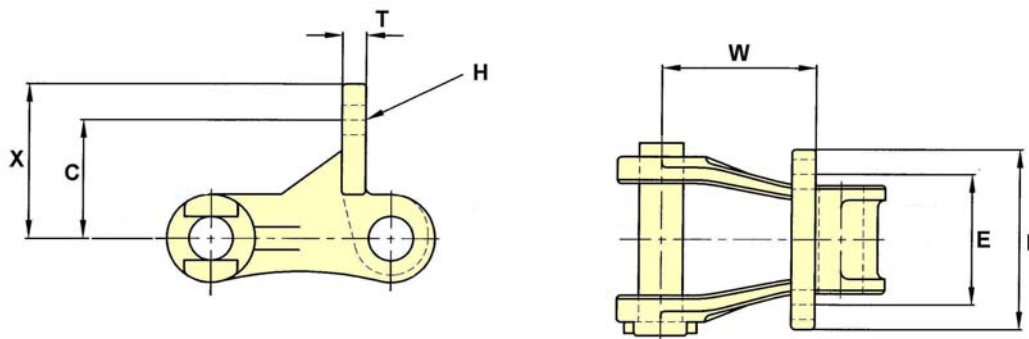
Drawing no. 218



CHAIN NO.	C	E	F	BOLT DIA H	T	W	X	Y	Z
720S	5.50	3.75	5.00	0.50	0.25	2.50	4.75	2.41	3.00

F29 Attachment

Drawing no. 14 A



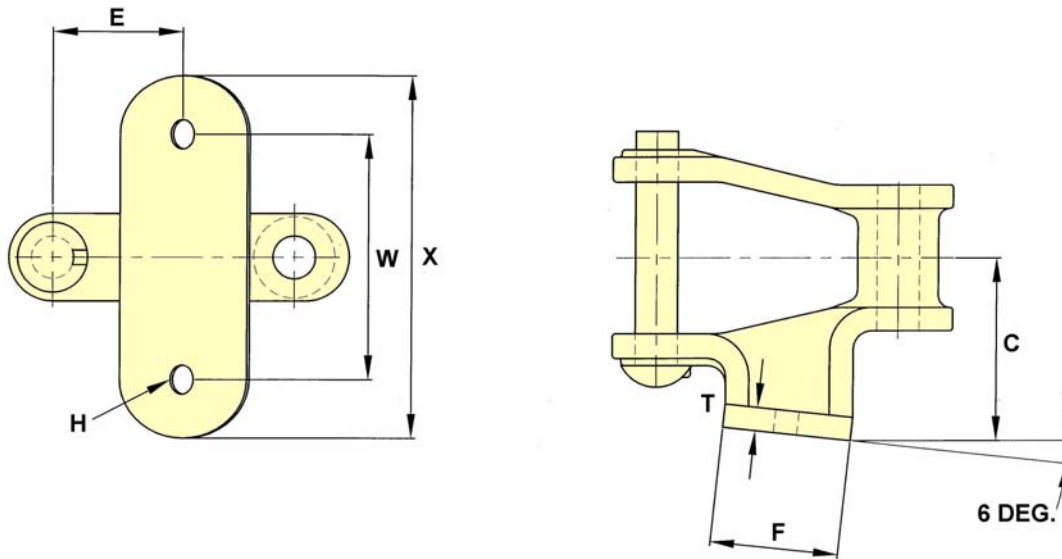
CHAIN NO.	C	E	F	BOLT DIA H	T	W	X
4103	2.00	3.22	3.28	0.50	0.44	2.64	2.64

The tabular dimensions and weights are approximate and are not binding.
Design improvements may result in variation from the published figures and verification is recommended.

American Pintle Chains

G1 Attachment

Drawing no. 225



CHAIN NO.	C	E	F	BOLT DIA H	T	W	X
462	1.38	1.81	0.75	0.25	0.16	2.00	2.75
477	1.44	1.13	1.31	0.31	0.25	2.63	3.50

The tabular dimensions and weights are approximate and are not binding.
Design improvements may result in variation from the published figures and verification is recommended.